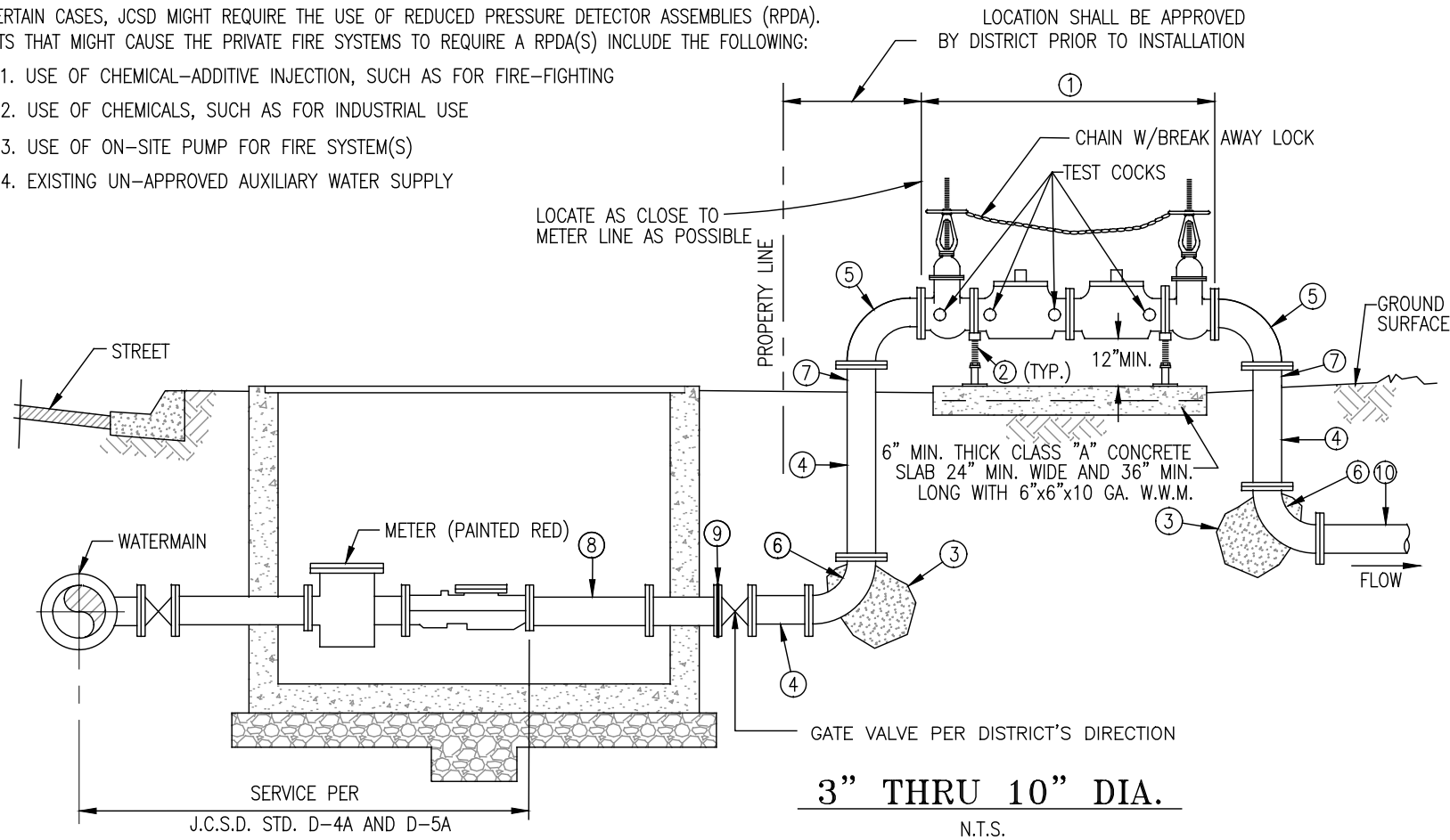


RPDA REQUIREMENT:

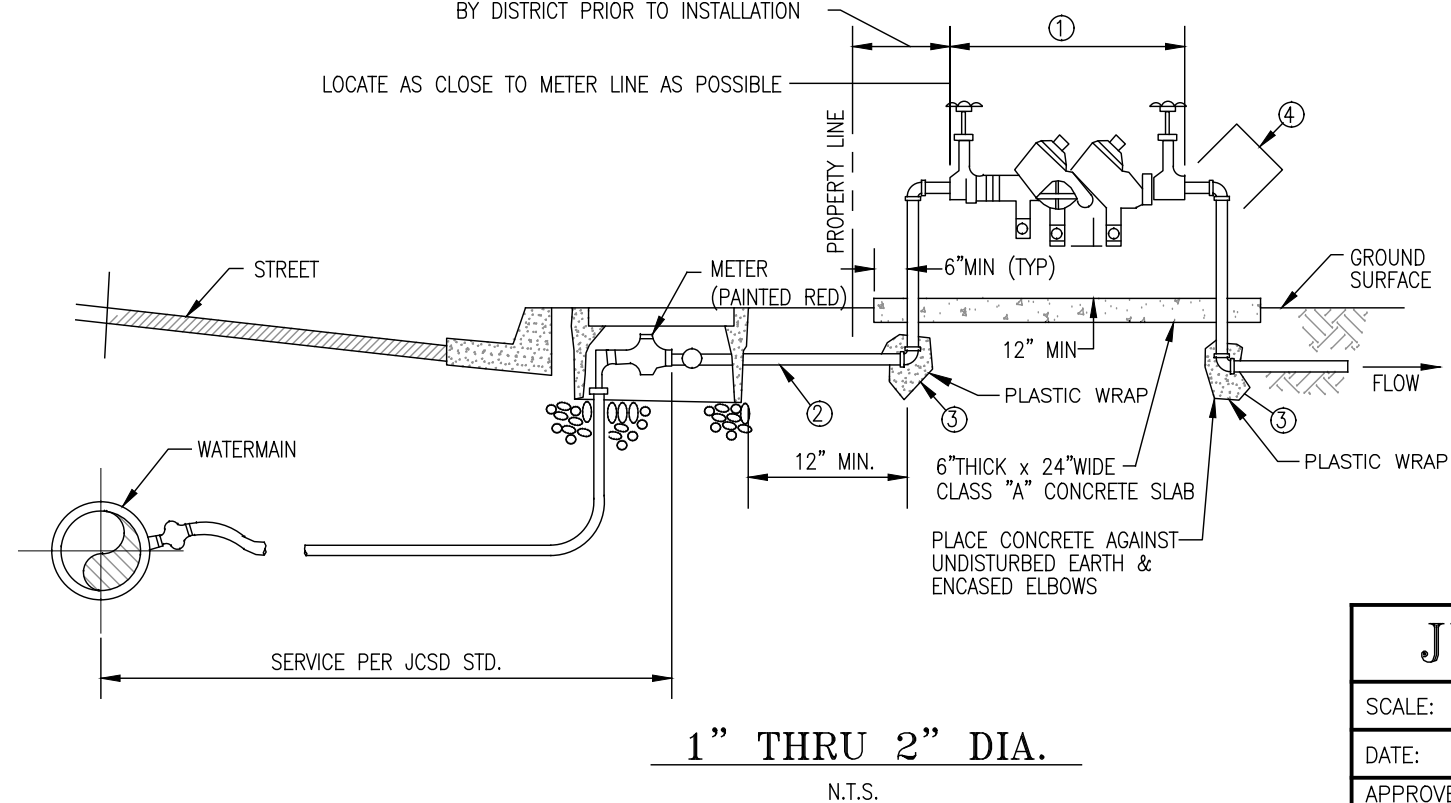
IN CERTAIN CASES, JCS D MIGHT REQUIRE THE USE OF REDUCED PRESSURE DETECTOR ASSEMBLIES (RPDA). EVENTS THAT MIGHT CAUSE THE PRIVATE FIRE SYSTEMS TO REQUIRE A RPDA(S) INCLUDE THE FOLLOWING:

1. USE OF CHEMICAL-ADDITIVE INJECTION, SUCH AS FOR FIRE-FIGHTING
2. USE OF CHEMICALS, SUCH AS FOR INDUSTRIAL USE
3. USE OF ON-SITE PUMP FOR FIRE SYSTEM(S)
4. EXISTING UN-APPROVED AUXILIARY WATER SUPPLY



LOCATION SHALL BE APPROVED BY DISTRICT PRIOR TO INSTALLATION

LOCATE AS CLOSE TO METER LINE AS POSSIBLE



1" THRU 2" DIA.

N.T.S.

ITEM	DESCRIPTION
①	REDUCED PRESSURE BACKFLOW PREVENTION DEVICE PER A.W.W.A. C-511-(LATEST) SERVICE LINE WITH FLG'D. ENDS. A.B.I.W.P. #150 P.S.I. M.W.W.P., W/GATE VALVES AND TEST COCKS PER DISTRICT APPROVED MANUFACTURERS LIST.
②	PIPE SUPPORTS PER JCS D STANDARD DRAWING NO A-5 (4 MINIMUM)
③	3 CU. FT MIN. OF CLASS "C"(2000 PSI) CONCRETE THRUST AND SUPPORT BLOCK
④	D.I. FILANGES, PIPE, AND FITTINGS SHALL BE DOUBLE CEMENT LINED AND BITUMINOUS COATING PER JCS D SPECIFICATIONS. FOR BELOW GRADE D.I.P. PROVIDE FOR DOUBLE POLYETHYLENE ENCASEMENT PER DISTRICT SPECIFICATIONS.
⑤	90° FLANGED D.I. LONG RADIUS (FUSION BONDED EPOXY LINED, SHOP EPOXY PRIMER AND FIELD APPLIED TWO (2) COATS, OUTSIDE PAINTED) ELBOW (FLxFL).
⑥	90° D.I. ELBOW DOUBLE CEMENT LINED AND PER JCS D SPECIFICATIONS (FLxFL).
⑦	FOR BELOW TO ABOVE GRADE TRANSITION D.I.P. TRIM, POLYETHYLENE ENCASEMENT AT THE TRANSITION AND PAINT ABOVE GRADE PORTION WITH PRIMER AND TWO (2) COATS OF PAINT.
⑧	FOR SERVICE LINE 3" DIA. AND ABOVE SERVICE LINE DIA. x REQ'D. LENGTH STD. WT. WELDED STL. PIPE (CML/C) W/STD. WT. WELDING FITTINGS AND 150# WELD NECK FLG'S. TO MATE REDUCED PRESSURE BACKFLOW PREVENTION DEVICE.
⑨	FOR CONNECTION TO CML&C PIPE, PROVIDE TROJAN FLANGE ISOLATION KIT BY APS WITH NUTS, BOLTS, WASHERS, SLEEVES, AND TYPE E GASKETS.
⑩	CUSTOMER SERVICE PIPE

NOTES:

1. THE "APPROVED" REDUCED PRESSURE PRINCIPLE BACKFLOW PREVENTION DEVICE SHALL BE LOCATED AND INSTALLED SUBJECT TO THE APPROVAL OF THE DISTRICT.
2. THE DEVICE MUST BE INSPECTED AND TESTED IMMEDIATELY AFTER INSTALLATION.
3. PIPE THREADS SHALL BE CLEAN AND SHARP, AND SEALED WITH APPROVED JOINT COMPOUND.
4. ALL WELDED JOINTS SHALL BE MADE WITH A MINIMUM OF TWO COMPLETE PASSES.
5. PAINT BARE METAL WITH PRIMER AND TWO (2) COATS OF PAINT PER DISTRICT SPECIFICATIONS. (NO PRIMER ON BRASS OR BRONZE)
6. SERVICE CANNOT BE TURNED ON UNTIL BACKFLOW ASSEMBLY HAS BEEN TESTED BY A CERTIFIED BACKFLOW TESTER.

ITEM	DESCRIPTION
①	REDUCED PRESSURE BACKFLOW PREVENTION DEVICE PER A.W.W.A. C-511(LATEST) SERVICE LINE SIZED W/SCR. ENDS. THRU 2" DIA. WITH A.B.I.W.P. #150 P.S.I. M.W.W.P. W/GATE VALVES & TEST COCKS.
②	FOR SERVICE LINE THROUGH 2" DIA. PVC COATED SERVICE LINE DIA. x REQ'D. LENGTH STD. WT. BRASS PIPE W/STD. WT. SCR. BRASS FITTINGS
③	2 CU. FT. MIN. OF CLASS "C" (2000 PSI) CONCRETE THRUST AND SUPPORT BLOCK
④	PAINT EXTERIOR WITH PRIMER AND TWO (2) COATS OF PAINT PER DISTRICT SPECIFICATIONS. (NO PRIMER ON BRASS OR BRONZE)

JURUPA COMMUNITY SERVICES DISTRICT

SCALE:	REDUCED PRESSURE BACKFLOW DEVICE	DRAWING NO.
DATE: SEPTEMBER 2025		H-2
APPROVED BY:	ALBERT A. WEBB ASSOCIATES CONSULTING ENGINEERS	
Sinnaro Yos, P.E. C68607	RIVERSIDE CALIFORNIA	W.O. 2023-3229

REV.