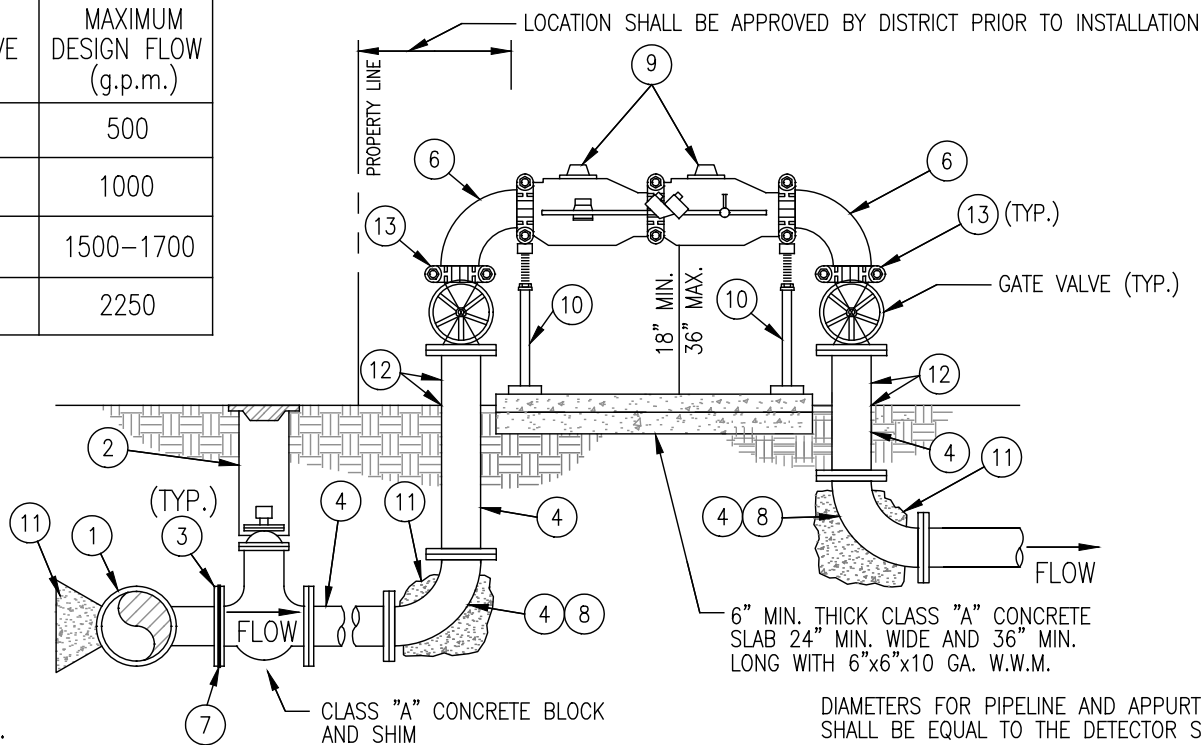


DETECTOR CHECK VALVE DIAMETER	MAXIMUM DESIGN FLOW (g.p.m.)
4"	500
6"	1000
8"	1500-1700
10"	2250



**NOTES:**

1. THE "APPROVED" FIRE SERVICE SHALL BE LOCATED AND INSTALLED SUBJECT TO THE APPROVAL OF THE DISTRICT.
2. THE FIRE SERVICE MUST BE INSPECTED AND TESTED IMMEDIATELY AFTER INSTALLATION.
3. ALL FIELD JOINTS SHALL BE FLANGED UNLESS OTHERWISE INDICATED. ALL WELDED JOINTS ON EPOXY LINED STD. WT. PIPE SHALL BE SHOP FABRICATED AND ALL EPOXY LINING SHALL BE SHOP APPLIED.
4. PIPE THREADS SHALL BE CLEAN AND SHARP, AND SEALED WITH APPROVED JOINT COMPOUND.
5. PAINT SHALL BE SAFETY RED (NO PRIMER ON BRASS OR BRONZE).

DIAMETERS FOR PIPELINE AND APPURTENANCES SHALL BE EQUAL TO THE DETECTOR SIZE.

ITEM	DESCRIPTION
①	MAINLINE DIA. x BRANCH DIA. TEE.
②	VALVE BOX & GATE VALVE INSTALLATION PER STD. NO. B-1.
③	ASA 150# SLIP-ON FLG. (TYP.) TO MATE VALVES AND FLANGED FITTINGS.
④	D.I. FILANGES, PIPE, AND FITTINGS SHALL BE DOUBLE CEMENT LINED AND BITUMINOUS COATING PER JCSD SPECIFICATIONS. FOR BELOW GRADE D.I.P. PROVIDE FOR DOUBLE POLYETHYLENE ENCASEMENT PER DISTRICT SPECIFICATIONS.
⑤	TAMPER SWITCH CONNECTION SHALL BE TO THE NEAREST BUILDING
⑥	90° FLANGED D.I. LONG RADIUS (FUSION BONDED EPOXY LINED, SHOP EPOXY PRIMER AND FIELD APPLIED TWO (2) COATS, OUTSIDE PAINTED) ELBOW (GRxGR).
⑦	FOR CONNECTION TO CML&C PIPE, PROVIDE TROJAN FLANGE ISOLATION KIT BY APS WITH NUTS, BOLTS, WASHERS, SLEEVES, AND TYPE E GASKETS.
⑧	90° D.I. ELBOW DOUBLE CEMENT LINED AND PER JCSD SPECIFICATIONS (FLxFL).
⑨	DOUBLE CHECK DETECTOR W/BY-PASS METER, W/RADIOREAD PURCHASED FROM THE DISTRICT, (INCLUDING O.S. & Y. VALVES-EPOXY LINED). BY-PASS METER FLOW RATE INDICATOR TO REGISTER IN G.P.M., METER TOTALIZER TO REGISTER IN 100'S CU. FT.
⑩	PIPE SUPPORT PER DISTRICT STANDARDS.
⑪	CONCRETE THRUST BLOCK PER J.C.S.D. STD. DWG. C-2
⑫	FOR BELOW TO ABOVE GRADE TRANSITION D.I.P. TRIM POLYETHYLENE ENCASEMENT AT THE TRANSITION AND PAINT ABOVE GRADE PORTION WITH PRIMER AND TWO (2) COATS OF PAINT.
⑬	GROOVED COUPLING.

# JURUPA COMMUNITY SERVICES DISTRICT

SCALE: NONE

DATE: SEPTEMBER 2025

**4", 6", 8" AND 10" DIA. FIRE SERVICE/DOUBLE  
DETECTOR CHECK VALVE TYPE N INSTALLATION**

DRAWING NO.

**H-1A**

APPROVED BY:

ALBERT A. WEBB ASSOCIATES  
CONSULTING ENGINEERS

Sinnaro Yos, P.E. C68607

RIVERSIDE

CALIFORNIA

W.O. 2023-3229

REV.