



JCSD PARKS & RECREATION DEPARTMENT

2024 ANNUAL REPORT



JCSD
PARKS & RECREATION DEPARTMENT

OUR LEADERSHIP



**BART
MORENO**
President
Division No. 4



**BETTY
FOLSOM**
Vice President
Division No. 3



**ANTHONY
HERDA**
Director
Division No. 5



**LUPE
NAVA**
Director
Division No. 2



**KEN J.
MCLAUGHLIN**
Director
Division No. 1

PARKS & RECREATION DEPARTMENT LEADERSHIP

STEVE LAWSON, CPRP
Director of Parks & Recreation

TRAVIS VISETH
Parks Superintendent

RYAN MORAIS, CPRP
Recreation Superintendent

TYLER HUGHES, CPRP
Management Analyst

FRED CERVANTES, CPRP
Senior Recreation Coordinator

DUJE BABAROVIC
Senior Recreation Coordinator

CYNTHIA MORQUECHO
Senior Recreation Coordinator

CAROLINE DEPAOLA, CPRP
Senior Recreation Coordinator

STEVE MORRIS
Parks Field Supervisor

JUSTIN PELOQUIN
Parks Field Supervisor

TABLE OF CONTENTS

- 4 MESSAGE FROM THE DIRECTOR
- 5 CORE VALUES
- 6 ORGANIZATIONAL CHART
- 7 WHO WE ARE
- 8 PARKS & FACILITIES
- 10 PARK INVENTORY
- 12 NATIONAL ACCREDITATION
- 13 PARK IMPROVEMENT PROJECTS
- 14 SPECIAL EVENTS
- 16 PARK AMBASSADOR PROGRAM
- 17 SENIOR SERVICES
- 18 TEEN CREW
- 19 YOUTH PROGRAMMING
- 22 YOUTH & ADULT SPORTS
- 23 RECREATION & ENRICHMENT CLASSES
- 24 THE DESI HOUSE
- 25 FACILITY RESERVATIONS
- 26 PARK & RECREATION MONTH
- 27 VOLUNTEER PROGRAM
- 28 PARK MAINTENANCE
- 29 FRONTAGE MAINTENANCE
- 30 PARK SECURITY
- 31 EMPLOYEE AWARDS PROGRAM
- 32 COMMUNITY PARTNERS
- 33 COMMUNITY LEADER AWARDS
- 34 MARKETING
- 35 A LOOK AHEAD TO 2025



MESSAGE FROM THE DIRECTOR

On behalf of the JCSD Parks & Recreation Department, I'm proud to present our 2024 Annual Report - a reflection of the meaningful work we accomplished this past year and the positive impact we continue to make in the Eastvale community.

In 2024, our team remained focused on our mission: enhancing the quality of life for all residents. We managed nearly 240 acres of parkland and over 4 million square feet of landscape frontage, ensuring our parks, trails, and public spaces stayed clean, safe, and inviting.

Beyond daily operations, we delivered several important capital and maintenance improvement projects—from playground upgrades to sports field renovations. Each project was thoughtfully designed to support long-term sustainability and keep pace with the evolving needs of our growing community.

We also provided a robust lineup of programs and events. From large-scale community celebrations to culturally rich gatherings and inclusive recreation opportunities for all ages, our events helped build community pride and foster personal well-being. Our senior programs continued to thrive, offering meaningful social connections and supportive resources, while youth and adult classes in fitness, arts, sports, and enrichment drew strong participation throughout the year.

Much of what we accomplish is made possible through collaboration. We are grateful for the continued support of the JCSD Board of Directors, local partners, nonprofit organizations, and our dedicated volunteers. These partnerships allow us to stretch our resources further and deliver high-quality, responsive services.

Most importantly, thank you to our residents. Your enthusiasm, involvement, and feedback inspire us every day. You are the reason we do what we do.

As we head into 2025, we're energized by what's ahead. We look forward to expanding our services, improving our parks, and creating even more opportunities for residents to connect, play, and thrive.

Here's to another incredible year - together.



**STEVE
LAWSON**
Director of Parks & Recreation
Jurupa Community Services District

CORE VALUES

S **SPEAK STRAIGHT & LISTEN GENEROUSLY** – Speak honestly in a constructive way that moves the action forward. Listen with care and without judgement ... most important, listen to understand and support. Say what you mean, and be willing to ask questions, share ideas, or raise issues that may cause conflict when it's necessary for team success. Address issues directly with those who are involved or affected. Rumors are destructive ... seek accurate information and only speak about things you know to be truthful.

T **TRUST OUR TEAM** – Strong teams are successful not just because they work together, but because they trust each other. Seek to build trust in all relationships ... personally, professionally and within our community. Assume good intentions and always give people the benefit of the doubt. Recognize your weaknesses and have the trust to appreciate when your team is better at something than you.

R **RESPECT** – Focus on being warm, friendly and approachable ... ensure civility in all our actions. Be graciously humble ... recognize your team's success over your own. Every interaction with our team or a customer is an opportunity to create deeper, more meaningful relationships. Respect our process and take great pride in achieving exceptional outcomes. Own and celebrate the team's success, but also hold yourself accountable and learn from your mistakes.

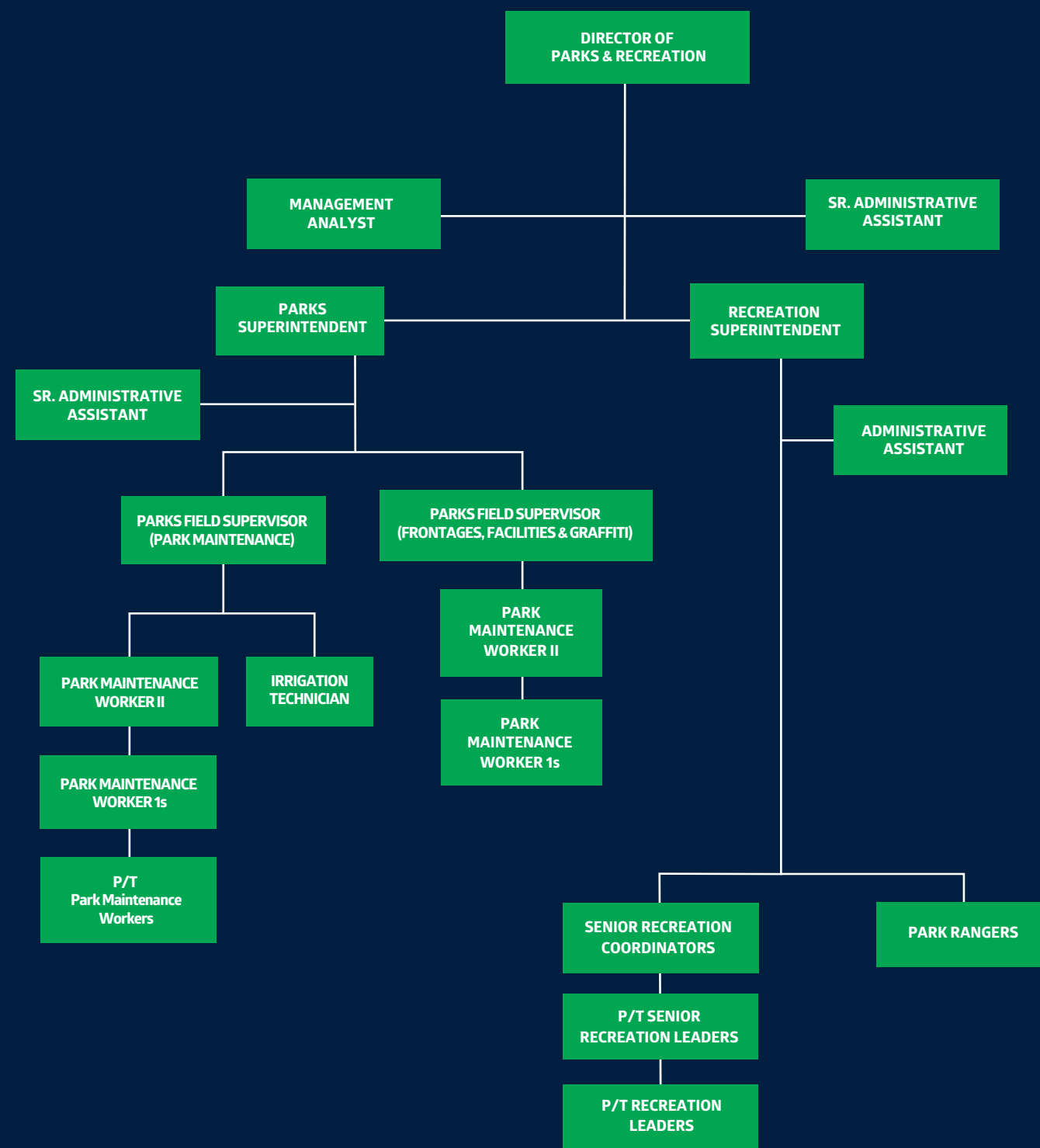
I **INSPIRATIONAL** – Be a leader ... take every opportunity to teach and help others learn and grow. Lead by example and never leave your team behind. When everyone is moving forward together, success takes care of itself.

V **VISIONARY** – Determined by the thought of what tomorrow can bring ... driven by grit to get it done today. Look ahead, anticipate and dream big. Build fruitful relationships within the industry ... draw upon the success of others to shape our future. Without the vision, there is no action ... without direction, there is no purpose. Be relentless about improvement.

E **EMPOWERED** – Don't accept anything at "face value" if it doesn't make sense to you ... don't be afraid to ask "Why?". Have the confidence and curiosity to challenge the "way we have always done it". Have a Growth Mindset in everything you do. Ask questions when you don't understand. Healthy, vigorous debate creates better solutions. Find a way to be exceptional.



PARKS & RECREATION DEPARTMENT ORGANIZATIONAL CHART



WHO WE ARE

The JCSD Parks & Recreation Department has proudly been offering parks & recreation services for the Eastvale community since 2003 and consists of three divisions: 1) Administration; 2) Park/Facility Maintenance and Operations; and 3) Recreation. Collectively, we're responsible for providing recreation programs, activities, and special events; managing over 240 acres of parkland, which includes 15 parks, first-class athletic fields, two splash pads, trails, a 30,000 square foot community center, a 6,500 square foot activity center, and a 2.5-acre special event venue; graffiti abatement; and maintaining nearly 5 million square feet of frontage landscaping.

 **31**
FULL-TIME STAFF

 **100+**
PART-TIME STAFF

MISSION STATEMENT:



At JCSD, our mission is to provide community through connection. This is accomplished by providing best-in-class programs, events, and services which bring the Eastvale community together.

VISION:



PARKS & FACILITIES



AMERICAN HEROES PARK
6608 Hellman Ave.
Eastvale, CA 92880



CEDAR CREEK PARK
6709 Cedar Creek Road
Eastvale, CA 92880



DAIRYLAND PARK
14520 San Remo
Eastvale, CA 92880



DEER CREEK PARK
6785 Iron Horse Lane
Eastvale, CA 92880



DESI HOUSE
13215 Altfillisch Ct,
Eastvale, CA 92880



EASTVALE COMMUNITY CENTER
13820 Schleisman Road
Eastvale, CA 92880



EASTVALE COMMUNITY PARK
12750 Citrus Street
Eastvale, CA 92880



HALF MOON PARK
14383 Cherry Creek Ave.
Eastvale, CA 92880



HARADA HERITAGE PARK
13099 65th Street
Eastvale, CA 92880



HARADA NEIGHBORHOOD CENTER
13099 65th Street
Eastvale, CA 92880



JAMES C. HUBER PARK
6411 Rolling Meadows
Eastvale, CA 92880



MCCUNE FAMILY PARK
7450 Eastvale Parkway
Eastvale, CA 92880

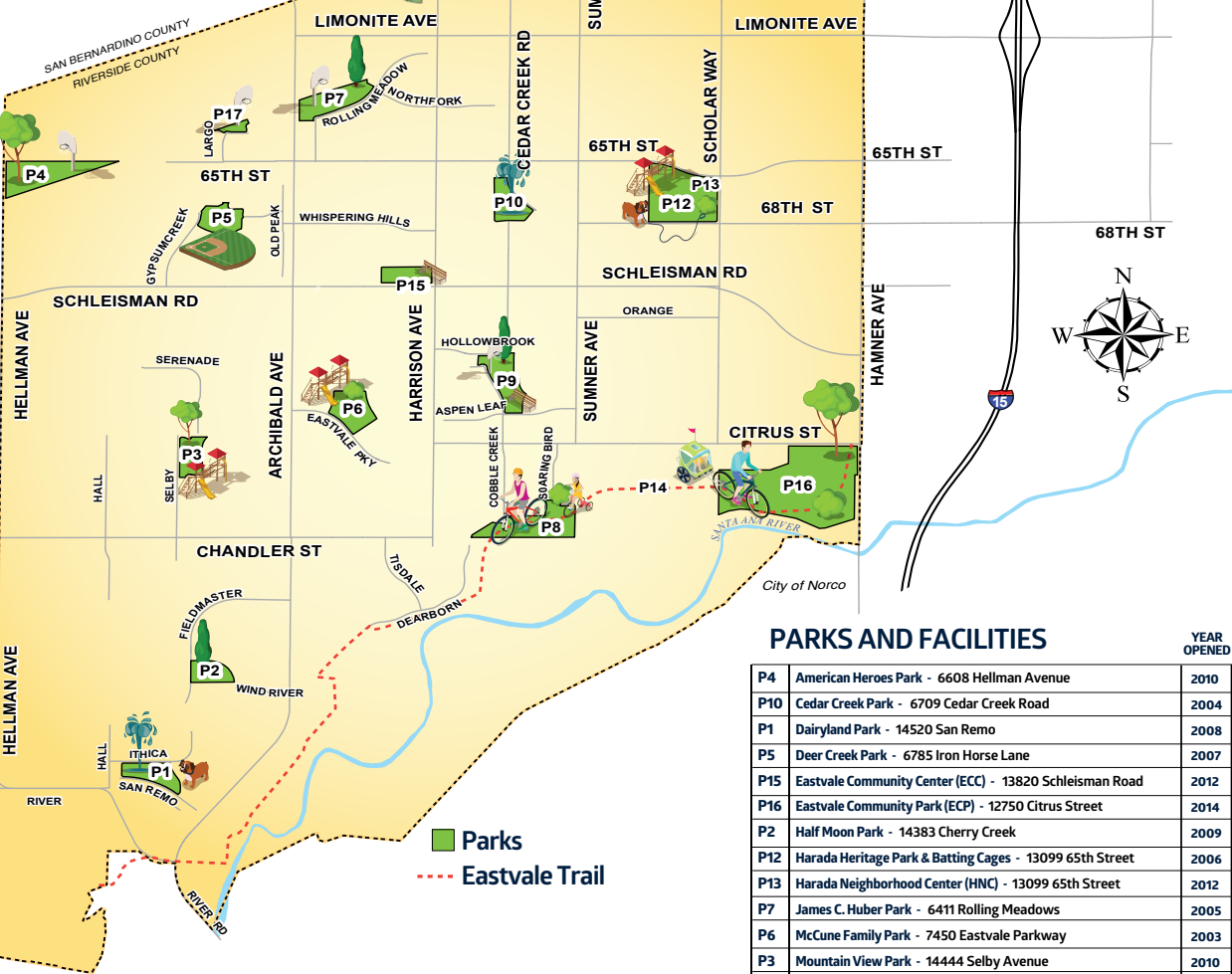


MOUNTAIN VIEW PARK
12750 Citrus Street
Eastvale, CA 92880



ORCHARD PARK
5900 Festival Way
Eastvale, CA 92880

JCSD PARKS
TERRITORY MAP



*All parks are open 6:00 a.m. - 10:00 p.m. daily

PARKS AND FACILITIES			YEAR OPENED
P4	American Heroes Park - 6608 Hellman Avenue		2010
P10	Cedar Creek Park - 6709 Cedar Creek Road		2004
P1	Dairyland Park - 14520 San Remo		2008
P5	Deer Creek Park - 6785 Iron Horse Lane		2007
P15	Eastvale Community Center (ECC) - 13820 Schleisman Road		2012
P16	Eastvale Community Park (ECP) - 12750 Citrus Street		2014
P2	Half Moon Park - 14383 Cherry Creek		2009
P12	Harada Heritage Park & Batting Cages - 13099 65th Street		2006
P13	Harada Neighborhood Center (HNC) - 13099 65th Street		2012
P7	James C. Huber Park - 6411 Rolling Meadows		2005
P6	McCune Family Park - 7450 Eastvale Parkway		2003
P3	Mountain View Park - 14444 Selby Avenue		2010
P11	Orchard Park - 5900 Festival Way		2004
P9	Providence Ranch Park - 7250 Cobble Creek		2004
P8	Riverwalk Park - 7674 Soaring Bird Court		2008
P17	Symphony Park - 13387 Largo Drive		2017
P18	Sendero Park - 6051 Harrison Avenue		2020



PROVIDENCE RANCH PARK
7250 Cobble Creek
Eastvale, CA 92880



SENDERO PARK
Located in the Sendero Community
Eastvale, CA 92880



RIVERWALK PARK
7674 Soaring Bird Court
Eastvale, CA 92880



SYMPHONY PARK
13387 Largo Dr
Eastvale, CA 92880

PARK INVENTORY



15
PARKS



240
ACRES OF
PARKLAND



3
SKATE PARKS



2
SPLASH PADS



6
TENNIS COURTS



35,000 sq ft
COMMUNITY
CENTER



5,000 sq ft
NEIGHBORHOOD
CENTER



4,904
TREES



3
DOG PARKS

4 miles
OF TRAILS





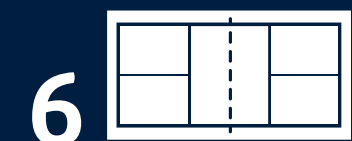
1 FULL-COURT
11 HALF-COURT
OUTDOOR BASKETBALL
COURTS




14
BALLFIELDS (13 LIGHTED)



23
PLAYGROUNDS



6
PICKLEBALL COURTS



2
BEACH VOLLEYBALL
COURTS



2.5 ACRE
SPECIAL EVENT
VENUE



24
PICNIC
SHELTERS



1
DISC GOLF COURSE



1
BATTING CAGE
COMPLEX

NATIONAL ACCREDITATION

The National Recreation and Park Association's Commission for Accreditation of Park and Recreation Agencies (CAPRA) provides quality assurance and quality improvement of accredited park and recreation agencies throughout the United States by providing agencies with a management system of best practices. CAPRA is the only national accreditation of park and recreation agencies and is a valuable measure of an agency's overall quality of operation, management, and service to the community. Achieving CAPRA accreditation is the best way to demonstrate that an agency and its staff provide the community they serve with the highest level of service.

In 2015, the JCSD Parks & Recreation Department became one of just five agencies in California to obtain CAPRA Accreditation. Accredited agencies must repeat this process every five years. JCSD was up for reaccreditation in 2020 but requested and received an extension until 2021 due to the COVID-19 pandemic.

On September 10, 2021, the CAPRA Commission formally approved JCSD's CAPRA reaccreditation. Impressively, we scored 100% on the assessment by meeting all 154 standards.

Currently, there are only 204 accredited park and recreation agencies in the United States and JCSD is one of only four accredited agencies in California. JCSD will be up for reaccreditation in September 2026.

With 482 Parks & Recreation Programs in the state of California, this means we are in the top 0.8% of California Parks & Recreation Programs!



AWARDS

In 2024, we received recognition from the California Association of Recreation and Park Districts for our Students & Seniors program. The outstanding innovation award of distinction celebrates agencies that introduce novel strategies in recreation programs, park maintenance, or district operations. Our Students & Seniors Program exemplifies this spirit through its dynamic approach to bridging generational gaps and strengthening community bonds. Initially a volunteer effort, it has grown into a monthly event series at the senior center, where high school students and seniors come together to celebrate holidays, share stories, and create lasting relationships. This inclusive program fosters social engagement across diverse backgrounds, helping to reduce senior isolation while empowering youth with leadership and public speaking skills. By enriching lives and cultivating a culture of respect and empathy, the Students & Seniors Program stands as a



In 2024, we received the Eastvale Chamber of Commerce Champion Award. This accolade is a testament to the enduring partnership between JCSD and the Chamber. We supported the Chamber by hosting the 2024 Installation Dinner & Awards Banquet at our Community Center.

PARK IMPROVEMENT PROJECTS



CEDAR CREEK FURNITURE REPLACEMENT

This project consisted of purchasing and installing all new picnic tables, benches, trash receptacles, and drinking fountains within the park



ECC PINNACLE ROOM FLOORING REPLACEMENT

This project consisted of removing and replacing the flooring in the Pinnacle Room at the Eastvale Community Center.



MOUNTAIN VIEW TENNIS COURT CONSTRUCTION

This project involved the design and construction of two new, lighted tennis courts at Mountain View Park.



MOUNTAIN VIEW TENNIS COURT AND BASKETBALL COURT RESURFACING

This project consisted of resurfacing the full-court basketball court and two tennis courts at Mountain View Park.



MOUNTAIN VIEW PLAYGROUND RESURFACING

This project consisted of removing and installing new rubberized surface for both the 2-5 and 5-12 year-old playgrounds



MCCUNE FAMILY PARK TENNIS COURT LIGHTING AND RESURFACING

This grant-funded (Prop. 68) project involved the design and installation of a lighting system for the two tennis courts at McCune Family Park.



MCCUNE FAMILY PARK BASKETBALL COURT RESURFACING

This project consisted of the resurfacing of two half-court basketball courts at McCune Family Park.



HALF MOON PARK PLAYGROUND RESURFACING

This project consisted of the removal and installation of new rubberized surface for both the 2-5 and 5-12 year-old playground.



HARADA DOG PARK LIGHTING INSTALLATION

This project consisted of designing and installing a lighting system for the dog park at Harada Heritage Park.



EASTVALE COMMUNITY CENTER EXTERIOR PAINTING

This project consisted of the painting of the exterior of the Eastvale Community Center.



PARKING LOT RESURFACING; AMERICAN HEROES, DAIRYLAND, MOUNTAIN VIEW, AND RIVERWALK PARKS

This project involved the slurry sealing and striping of various park parking lots.

SPECIAL EVENTS

EGG-CELLENT ADVENTURE

March 30, 2024 at the Eastvale Community Center

More than 500 children attended the Eastvale Community Center on March 30 to celebrate Easter by walking along the Bunny Trail! Attendees were able to visit different vendors who were passing out eggs, complete arts and crafts, and finally meet the Easter Bunny at the end of the trail!



COMMUNITY CAMPOUT

May 4-5, 2024 at Harada Heritage Park

Over 200 attendees had an amazing time playing games, making s'mores, and sharing delicious meals together under the stars before camping in their tents.



PICNIC IN THE PARK

June 28-30, 2024 at Eastvale Community Park

Bringing in over 20,000 attendees over the weekend, this event was a three-day extravaganza full of live entertainment, family friendly games, delicious food, local vendors, and a one of a kind fireworks show



MOVIES IN THE PARK

May 11, June 8, July 13, August 10, and September 14

Movies in the Park is a monthly summer series that rotates locations throughout our parks system showcasing different movies for the community to enjoy. With a different movie every month, we were able to showcase films such as; Wish, Teenage Mutant Ninja Turtles: Mutant Mayhem, Pokemon Detective Pikachu, Elemental, and Jumanji (1995).



65TH STREET LIVE

July 12, July 18, July 26, August 2, August 9, and August 16

With 2,000 attendees each week, we put on some amazing concerts for the community! These concerts were a hit for the community and helped usher in the summer months with bands like Smooth Sounds of Santana, Hollywood U2, Mirage, Como La Flor, Cold Duck, and Generation Idol.



FALL FESTIVAL

October 5, 2024 at Harada Heritage Park

Over 4,000 attendees celebrated fall with a variety of merchandise and food vendors, arts and crafts, contests for children and adults, and live music!



BARKS AND BREWS

October 19, 2024 at American Heroes Park

This event hosted over 500 attendees and their furry friends as they participated in a dog fashion show, a whipped cream eating contest, and an incredible K9 unit demonstration from Riverside Sheriff Organization! Those not participating also had the opportunity to shop with more than 20 different dog themed vendors!



WINTER WONDERLAND

December 7, 2024 at Eastvale Community Center

Approximately 3,500 attendees celebrated the coming of Christmas with a tree lighting ceremony, arts and crafts, photos with Santa, live performances, and even snow sledding for the kids to enjoy!



BREAKFAST WITH SANTA

December 8, 2024 at Eastvale Community Center

Over 200 attendees joined us for a morning Christmas celebration including arts and crafts, pictures with Santa, and a delicious breakfast with the big man himself!



PARK AMBASSADOR PROGRAM

In 2024, we launched our brand new Park Ambassador Program! This program is a volunteer initiative aimed at fostering community stewardship and enhancing communication between residents and JCSD. Ambassadors serve as the eyes and ears of our parks, helping to ensure they remain safe and welcoming spaces for everyone.

Ambassadors commit to a one-year term, during which they are assigned a specific park for bi-weekly inspection visits and reporting to help enhance park safety and quality. To ensure collaboration and support, quarterly meetings with Department staff are held to discuss findings and progress.

The program officially launched on September 8, 2024, and was promoted through social media, signage, newsletters, and local publications. The response from the community was outstanding - we interviewed and selected 26 Ambassadors, ensuring at least one representative for every park in our system.

On December 10, 2024, we hosted a program orientation at the Eastvale Community Center to introduce our vision, outline expectations, and prepare our Ambassadors for their roles. I'm pleased to share that the event was a great success.



SENIOR SERVICES

JCSD is proud to offer a wide variety of senior services for mature adults 50 years and older, including fitness, arts & crafts, social gatherings, educational workshops, and more. Whether you're looking to make new friends, learn a new skill, or simply enjoy a welcoming community space, our programs provide something for everyone. Join us at The Desi House (13215 Altfillisch Court, Eastvale CA 92880) Monday-Friday from 8:00 AM-1:30 PM and discover the benefits of staying active!



Active Classes	Fall 8	Summer 8	Winter 8	Spring 8
Informative Classes	Fall 4	Summer 3	Winter 3	Spring 2
Miscellaneous Classes	Fall 6	Summer 7	Winter 6	Spring 6
Events	Fall 3	Summer 3	Winter 3	Spring 3
Totals	21	21	20	19

408 participants in these programs | **56** daily attendance | **22.5** hours per week as an open senior center



TEEN CREW

In 2024, we launched our new Teen Program called the Teen CREW! Designed for students in grade 7-12, this monthly meeting focused on communication, responsibility, enrichment, and work ethic. Participants heard from community leaders and explored other volunteer opportunities.

Meetings were held at the Desi House on September 19, October 17, November 21, and December 19.



YOUTH PROGRAMMING

JCSD's award-winning and innovative Kids Zone is a convenient, affordable, and safe recreation program for times when school is not in session for students in grades kindergarten through 6th grade. The program provides a positive and healthy environment and includes varying activities such as:

Homework Time | Arts And Crafts | Sports | Organized Games Special Events
Supervised Free Play | And More!

KIDS ZONE

Rosa Parks Elementary School - 7,210 participants
Clara Barton Elementary School - 6,567 participants
Eastvale Elementary School - 2,412 participants
Ronald Reagan Elementary School - 4,589 participants
Philistine Rondo School of Discovery - 5,953 participants

26,731 Total Participants



YOUTH PROGRAMMING

ME AND MY GROWN UP

Me and My Grown Up up is a program where children ages 1.5-3.5 and their grown ups get together for some fun activities as they learn, grow, and socialize. Located at Harada Neighborhood Center, classes met twice per week.

M/W- 9:30am-11:30am or T/TH- 9:30am-11:30am

Spring: 664 Participants
Fall: 392 Participants
Summer: 368 Participants
Winter: 424 Participants

Total: 1,848 Total Participants

TINY TOTS

Tiny Tots was offered throughout 2024 as a way to prepare children ages 3-5 for their academic career while teaching them social skills. Featured at the Harada Neighborhood Center, participants attended class twice per week. After graduating Tiny Tots, these young kids were ready to take the next step into transitional kindergarten!

2 classes M/W 9am-11am | 2 classes T/TH 9am-11am
 1 class M/W 12 | 1 class T/TH 12-3

Spring: 2,264 Participants
Fall: 1,312 Participants
Summer: 1,224 Participants
Winter: 688 participants

Total: 5,488 Total Participants



YOUTH PROGRAMMING

SUMMER CAMP

Our summer and winter camps are designed for 6-12 year olds as they explore new ideas, stay active and form lasting friendships during school breaks! Guided by our group of enthusiastic Recreation Leaders, campers participate in weekly-themed field trips and activities designed to promote camp activities, while having fun!

Week 1: 34 participants – Skate Express
 Week 2: 29 participants – Lucky Art Crayonology
 Week 3: 37 participants – Get Air
 Week 4: 35 participants – Splash La Mirada
 Week 5: 44 participants – Harkins Theater
 Week 6: 48 participants – The Cove
 Week 7: 50 participants – Big Als
 Week 8: 50 participants – McCune Family Park BBQ

Total: 327 Total Participants

WINTER CAMP

Participants enjoyed fun-filled days of group games, arts and craft activities, enrichment activities and more! After all three weeks, we sent out a survey and we received 100% satisfaction rate from all parents who participated in the program!

Week 1: 31 participants
 Week 2: 31 participants
 Week 3: 31 participants

Total: 93 Total Participants



YOUTH & ADULT SPORTS



ADULT SOFTBALL LEAGUE

3 seasons
6 teams per season (18 teams in the year)
100 players per season (300 players in the year)



YOUTH BASKETBALL LEAGUE

2 seasons
40 teams per season (80 teams in the year)
400 players per season (800 players in the year)



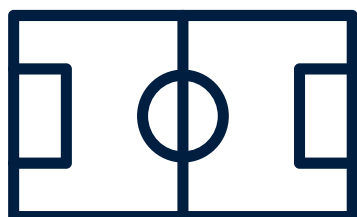
YOUTH VOLLEYBALL LEAGUE

2 seasons
32 teams per season (64 teams in the year)
320 players per season (640 players in the year)



JCSD SPORTS CLASSES

40 Sports Classes
445 Participants



OPEN GYM

14,945 Open Gym Visits

RECREATION & ENRICHMENT CLASSES

WINTER

198 classes
1,320 participants

SPRING

222 classes
1,580 participants

SUMMER

208 classes
1,418 classes

FALL

211 classes
1,316 participants





THE DESI HOUSE

The Desi House is our own little oasis in the heart of Eastvale. Perfect for everything from weddings to baby showers to business meetings and more, The Desi House is 2.5 acres of beautiful event space. The Desi House has become the premier destination for all events within Eastvale.



29 Reservations



2,351 Guests Served



FACILITY RESERVATIONS

221 
PARK SHELTER
RESERVATIONS

238 
PINNACLE ROOM
RESERVATIONS

42 
HARADA NEIGHBORHOOD
CENTER RESERVATIONS

11 
GYM RESERVATIONS

117 
ART ROOM RESERVATIONS

ACTIVITY ROOM A:
76 RESERVATIONS


ACTIVITY ROOM B:
70 RESERVATIONS

ACTIVITY ROOM C:
74 RESERVATIONS

FOOD DRIVE

 **8,245** people served

BLOOD DRIVE

5 blood drives with
 **177** units of blood saving
531 lives!

9 COMMUNITY PARTNERSHIP EVENTS

Marked As Winners Backpack Giveaway | Eastvale Chamber of Commerce Emergency Preparedness
Eastvale Chamber of Commerce Installation Dinner | Eastvale Chamber of Commerce Mixer
Kiwanis Presidential Service Awards | Move Through Motivation 24 Hour Challenge
Eastvale Chamber of Commerce – National Day of Prayer | American Red Cross Blood Drives |
RivCo Election | Miss Eastvale Pageant

PARK & RECREATION MONTH

Since 1985, the United States has celebrated Park and Recreation Month in July to promote the creation of strong, vibrant, and resilient communities through the power of parks and recreation. This month also recognizes the full-time park and recreation professionals, as well as the hundreds of thousands of part-time and seasonal workers and volunteers, who maintain our local, state, and community parks.

In 2024, we showcased a fun and unique celebration of our parks and recreation using a Friends themed marketing campaign which included different showcases of all the fun things we do here at JCSD!



VOLUNTEER PROGRAM

The JCSD Parks & Recreation Department believes that volunteers play an integral role in our daily operations. Volunteering is important because it fosters community connection, promotes personal growth, and helps us bring great service to the community. Our volunteers help with everything from Special Events & Youth Sports Coaching to Community Cleanups & Park Inspections!

4,796
VOLUNTEER HOURS

\$178,986.72
ESTIMATED VALUE OF \$37.32 PER HOUR

VOLUNTEER RECOGNITION

On Saturday, April 13, 2024, JCSD hosted its annual Volunteer Recognition at the Regal Movie Theatre in Eastvale. Each volunteer received complimentary movie tickets for themselves and up to two family members. Upon arrival, they were welcomed with a goodie bag filled with movie-themed candy, along with vouchers for free popcorn and a drink.

As they entered the theatre, volunteers were greeted by a special display featuring their names on the big screen in appreciation of their service. The event concluded with a private screening of Ghostbusters: Frozen Empire, making for a fun and memorable way to celebrate and thank our dedicated volunteers for their contributions.



PARK MAINTENANCE



2,279

Trees within our parks



240

Acres of Parkland



20,000

pounds of seed laid down



4

Tons of fertilizer applied



36,000

Hours of park maintenance staff



140

Acres mowed and maintained each week



FRONTAGE MAINTENANCE

BY THE NUMBERS



4.2 MILLION

sq feet of frontage maintenance in Eastvale



877,821

sq feet of frontage maintenance in Jurupa Valley



4,165

trees trimmed in Eastvale frontages

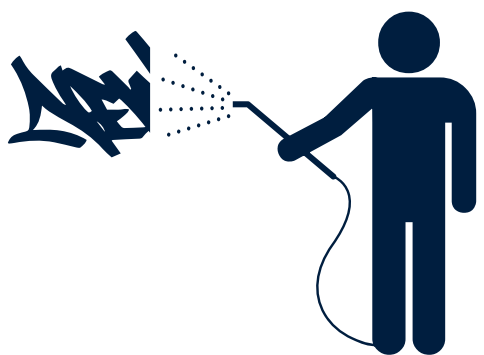


675

trees trimmed in Jurupa Valley frontages



GRAFFITI ABATEMENT



JURUPA VALLEY

15,400

Number of graffiti incidents removed

57,600

Total square feet of graffiti removed

EASTVALE

748

Number of graffiti incidents removed

5,300

Total square feet of graffiti removed

PARK SECURITY



4,000

Hours of Park Patrol
from our Park Rangers



2,000

Hours of Riverside
County Sheriff patrol



EMPLOYEE AWARDS PROGRAM



PART TIME MOST VALUABLE PLAYER:
JAMES JEBAILI

This award is given to the employee who consistently exceeds the expectations of their position, performing at a high level beyond normal job requirements.



PART TIME COACH'S AWARD:
CHARISMA CRUZ

This award is given to the employee who consistently demonstrates an ability and willingness to work positively, respectfully, and effectively with both external and internal customers.



PART TIME UTILITY PLAYER AWARD:
MIKAYLA PECKLER

This award is given to the employee who performs various roles, or is consistently willing to assist with multiple programs and events.



PART TIME ROOKIE OF THE YEAR:
CHRISTOPHER LIRA

This award is given to the employee who has been a part of the team less than one year and displays the characteristics and performance consistent with the department's core values.



FULL TIME UTILITY PLAYER:
MELISSA OSUNA

This award is given to the employee who performs various roles, and consistently demonstrates an ability and willingness to work positively, respectfully, and effectively through all programs with both external and internal customers.



FULL TIME MOST VALUABLE PLAYER:
JOSE MEDINA

This award is given to the employee who consistently exceeds the expectations of their position, performing at a high level beyond normal job requirements.

COMMUNITY PARTNERS



COMMUNITY LEADER AWARDS

The JCSD Parks & Recreation Department genuinely values our community partners and understands their roles in helping us best serve the community and vice-versa. To ensure our many community partners understand their importance to us and to publicly recognize the outstanding efforts of those partners that go above and beyond, we created the “JCSD Community Leader Award” in July 2022. Award recipients are selected on a quarterly basis by JCSD Parks & Recreation Department staff and honored at JCSD Board meetings.

JANUARY 2024 – BRANDY HILL

On January 22, 2024, the JCSD Board of Directors presented Brandy Hill, President of the Eastvale Girls Softball Association (EGSA), with the seventh JCSD Community Leader Award. During her tenure as President, Brandy has played a pivotal role in the growth and success of EGSA. She has also provided invaluable support to the JCSD Parks & Recreation Department by contributing to the ballfield improvement projects at Providence Ranch and McCune Family Parks. Brandy’s exceptional communication skills, collaborative spirit, and unwavering dedication to the well-being of the youth she serves make her a remarkable community partner and a most deserving recipient of this award.



APRIL 2024 – SUNNY SAINI

On April 22, 2024, the JCSD Board of Directors presented Sunny Saini, President of the Sands Cricket Association, with the eighth JCSD Community Leader Award. For over 12 years, Sunny has demonstrated exceptional leadership in managing the Adult Cricket League, which plays every Sunday at Harada Heritage Park. His dedication, however, extends far beyond organizing games. He is a steadfast supporter of JCSD and has made substantial financial contributions to our special events, generously provided food and refreshments for team members during various activities, and is committed to the upkeep of our athletic fields. Sunny’s ongoing support has made him an invaluable partner to the department and the residents of Eastvale.



JULY 2024 – EASTVALE CRUMBL

On July 22, 2024, the JCSD Board of Directors presented Eastvale Crumbl, with the ninth JCSD Community Leader Award. Since December 2023, Eastvale Crumbl Cookies has demonstrated remarkable generosity to the Parks & Recreation Department. They provided free cookies for our Cookies and Cocoa event and donate numerous cookies every Thursday for our Senior Social Hour program. Our seniors eagerly anticipate these delicious cookies each week, and we are very grateful for this kindness. Eastvale Crumbl Cookies’ support has made them an invaluable partner to the department and the residents of Eastvale.



OCTOBER 2024 – MINT HEALTH INSURANCE AGENCY

On October 28, 2024, the JCSD Board of Directors presented Mint Health Insurance Agency with the tenth JCSD Community Leader Award. Since March 2023, Mint has been a dedicated partner, providing essential Medicare information and financial support to our senior population. Their contributions have enhanced a variety of senior events, including sponsoring shaved ice for gatherings and providing cakes and decorations for our monthly senior birthday celebrations. Beyond their generous donations, Mint has played a key role in delivering valuable resources to our senior community. Mint’s contributions have made a lasting impact on the Parks & Recreation Department and residents of Eastvale.



MARKETING

EASTVALE EDITION



16,000
Quarterly
Mailings
(64,000 total)



**DIGITAL
VIEWS:**
12,844 - Winter
18,027 - Spring
20,101 - Summer
7,784 - Fall



A LOOK AHEAD TO 2025

**CONTINUED
IMPROVEMENT
OF THE JCSD PARK
AMBASSADOR
PROGRAM**

**COMPLETION
OF THE PARKS
& RECREATION
MASTER PLAN**

**LAUNCHING
OF ADAPTIVE
PROGRAMMING**

**INSTALLATION
OF 8 DEDICATED
PICKLEBALL
COURTS**

**CONTINUED
EXPANSION OF
SENIOR AND TEEN
PROGRAMMING**



JCSD
PARKS & RECREATION DEPARTMENT