

**JURUPA COMMUNITY SERVICES DISTRICT
RIVERSIDE, CALIFORNIA**

ADDENDUM NO. # 2

TO THE PLANS AND SPECIFICATIONS FOR
ANNUAL WATERLINE REPLACEMENT PROJECT
44TH STREET AREA
JCSD P.N. C245118
AND
GLENROY CT INTERTIE WATER PLAN
JCSD P.N. M221003

Bidders are advised that the plans and specifications for the above referenced contract are hereby amended in the following manner and the following manner only:

A. GENERAL

1. All provisions of this Addendum No. 2 are hereby incorporated into the Contract Documents and bidders shall account for all provisions pursuant to this Addendum No. 2 in submitting their bid proposals. Each Bidder shall include a dated and signed copy of this Addendum No. 2 with his sealed bid proposal.

B. SPECIFICATIONS

2. All references in the Contracting Bid Documents to District Standards **D-1, D-2, D-3, D-4** and **D-4A** are replaced with the revised details in **Attachment A** for this project.
3. Delete: Specifications Page B-3, Section 6, bullet point "Potential bidders who wish to submit a bid to JCSD must submit their bid electronically (PDF format – Volume II) to JCSD Bids, email jcsdbids@jcsd.us".

Replace with: "Potential bidders who wish to submit a bid to JCSD must submit their bid electronically (PDF format – Volume I) to JCSD Bids, email jcsdbids@jcsd.us"

C. QUESTIONS

1. Are the standard drawings included in the specifications?

Answer:

Yes, the contractor should follow the standard drawings included in Addendum No. 1 and Addendum No. 2. If any pertinent standard drawings are not included in the addendums, the contractor shall refer to the standard drawings on the JCSD website only for the ones not included in the addendums.

2. How is the concrete work, e.g., sidewalk, curb, and gutter repair, included in the bid schedule?

Answer:

The Contractor shall include all necessary concrete work under Bid Item 156. This includes, but is not limited to, the removal and replacement of concrete sidewalk panels required for water meter installation, driveway panels, curb and gutter and cross gutters R&R for mainline installation

This is a lump sum bid item, contractor is encouraged to visit the site for accurate estimate. No additional compensation is allowed.

3. Is the contractor responsible for furnishing the meter?

Answer:

Yes, the contractor is responsible for furnishing and properly installing the meter and meter box. For meter specifications, refer to addendum 1.

4. Is sewer bypass submittal required for each location?

Answer:

Yes, the contractor is required to submit site-specific bypass plans for each set-up for JCSD review and approval.

5. Sheet 16 of the waterline imp. Plans has a callout that states " transfer all services to new main" but only 1 service is called out at 18+39. Question- is there more services than just this one at 18+39" plans appear to have multiple addresses along the alignment?

Answer:

The only service to be transferred is located at Station 18+39 (4740 Pedley Road).

6. Is there a prebid meeting? If so can you provide me with the info

Answer:

No Pre-Bid meeting is scheduled

7. Is Striping thermoplastic or paint ?

The City of Jurupa Valley requires all striping to be thermoplastic and additionally the City requires the entire intersection to be re-striped including crosswalks and legends in the construction area.

By: Shane Bloomfield
Shane Bloomfield (Engineer of Record)

Date: 1/28/25

ADDENDUM NO. 2 ACKNOWLEDGEMENT

Bidder hereby acknowledges receipt of Addendum No. 2 and the incorporation thereof in bid proposal for: ANNUAL WATERLINE REPLACEMENT PROJECT 44TH STREET AREA JCSD P.N. C245118 AND GLENROY CT INTERTIE WATER PLAN JCSD P.N. M221003 and bidders shall account for all provisions pursuant to this Addendum No. 2. **This acknowledgement page shall be signed, dated, and included with the Bid Proposal Packet.**

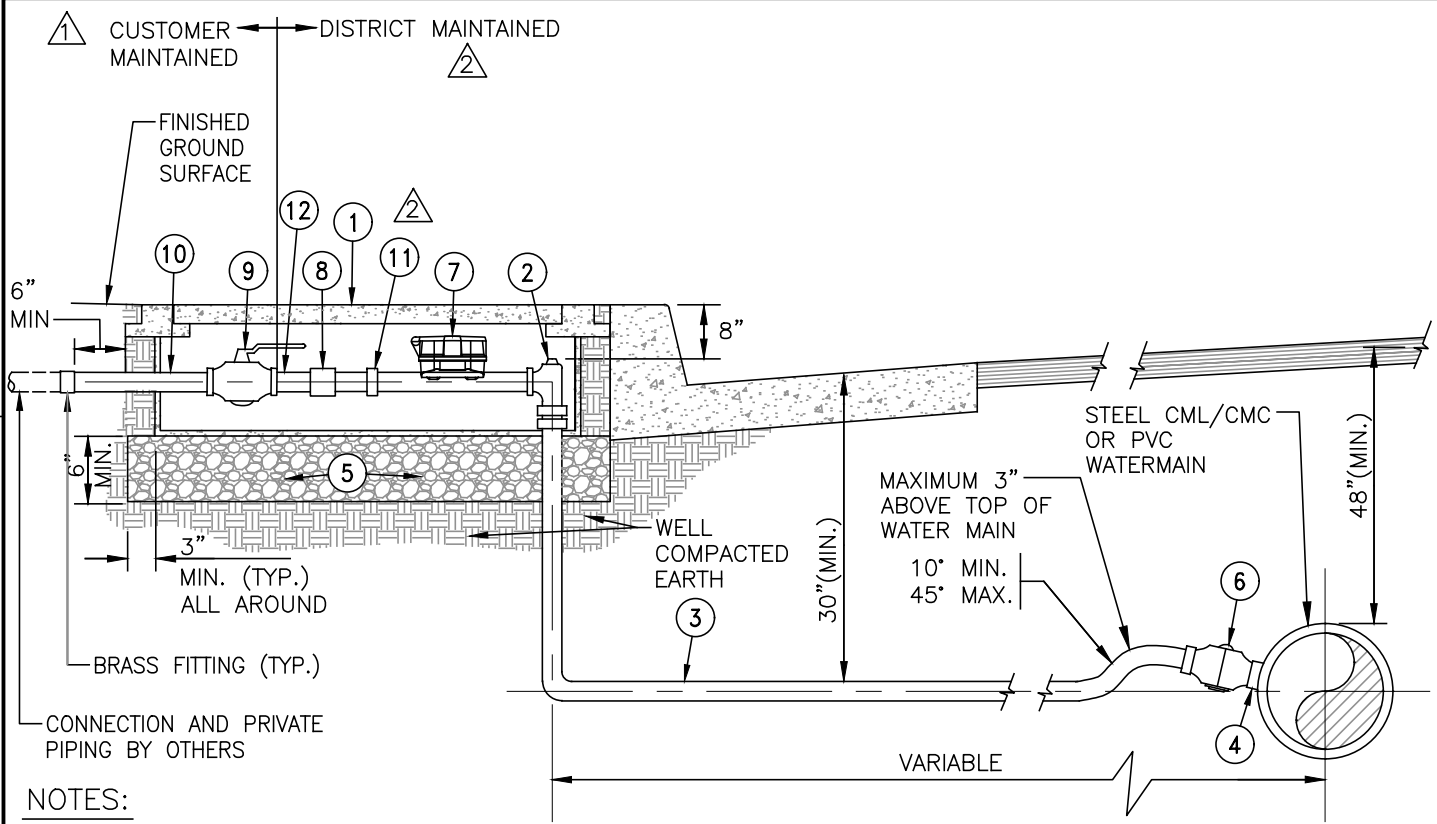
Contractor: _____

By: _____
(Contractor's Authorized Representative)

Date: _____

Title: _____

ATTACHMENT A



NOTES:

1. WHERE SIDEWALK IS DIRECTLY BEHIND CURB, LOCATE METER BOX RIGHT BEHIND THE SIDEWALK.
2. WHERE PARKWAY IS DIRECTLY BEHIND CURB, LOCATE METER BOX RIGHT BEHIND THE CURB
3. PIPE THREADS SHALL BE CLEAN AND SHARP AND SEALED WITH AN APPROVED JOINT COMPOUND.
4. METER SHALL NOT BE PLACED IN DRAINAGE AREA, DEPRESSIONS OR WITHIN TWO FEET OF A DRIVEWAY APPROACH.
5. DISTRICT MAINTAINED: ANGLE METER, METER, CHECK VALVE \triangle
6. CUSTOMER MAINTAINED: BRASS BALL VALVE.
7. FOR 1" METER INSTALLATION, SUBSTITUTE 1" DIMENSION WHERE 3/4" IS INDICATED.

4/2024 STD. DETAIL REVISION

ITEM	DESCRIPTION
①	J & R POLYMER CONCRETE METER BOX P-W 6B WITH TWO PIECE COVER OR APPROVED EQUAL. USE METER BOX P-W 6B-20K FOR INCIDENTAL TRAFFIC CONDITIONS, CHECK FOR H20 RATED (FOR E-METER READ, THE METER BOX LID SHALL HAVE QUICK READ PORT, BADGER METER ENDPOINT: ORION CELL-C).
②	1" x 3/4" BALL ANGLE METER STOP W/ LOCK WING
③	1" PLASTIC COATED COPPER TUBE, TYPE K, COPPER SHALL BE CONTINUOUS WITH NO JOINTS FROM SERVICE CONNECTION TO RISER.
④	BLK. STL. STD. COUPLING TO PIPE W/COLLAR PER STD. D-6 (FOR STEEL WATERMAIN) OR WATERMAIN DIA. X 1" SERVICE SADDLE PER DISTRICT SPECIFICATIONS (FOR PVC WATERMAIN)
⑤	3/4" DIA. CRUSHED ROCK
⑥	1" DIA. BALL CORP. STOP I.P.T. INLET X PACK JOINT
⑦	SEE APPLICABLE CONSTRUCTION NOTE FOR CORRECT METER, METER TO BE FURNISHED BY CONTRACTOR
⑧	1" DIA. BRASS PIPE W/ 1" DIA. BRONZE SPRING CHECK VALVE \triangle
⑨	1" BRASS BALL VALVE W/ HANDLE (1" X 12" BRASS PIPE), NOT REQUIRED WITH BACKFLOW SERVICE \triangle \triangle
⑩	MIN. 12" BRASS SPOOL WITH PROTECTIVE WRAP
⑪	3/4" x 1" METER TAIL FOR 1" METER ONLY
⑫	2" NIPPLE

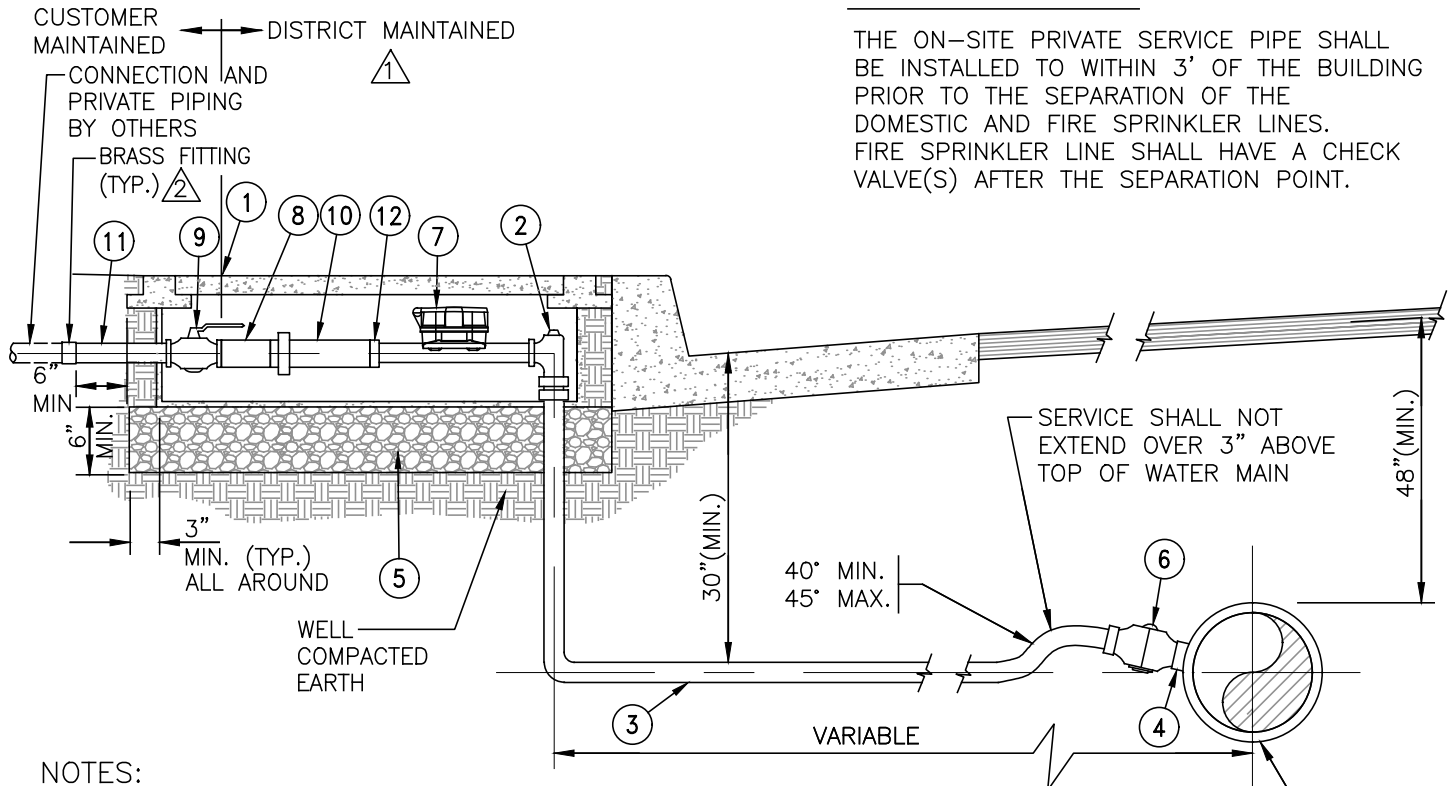
7/2021 STD. DETAIL REVISION

JURUPA COMMUNITY SERVICES DISTRICT

SCALE: NONE	3/4" OR 1" METER, 1" WATER SERVICE DETAIL (W/OUT RESIDENTIAL FIRE SPRINKLERS)	DRAWING NO. D-1
DATE: SEPTEMBER 2020	ALBERT A. WEBB ASSOCIATES CONSULTING ENGINEERS	
APPROVED BY: Sinnaro Yos, P.E. C68607	RIVERSIDE CALIFORNIA	W.O. 2023-3229

FIRE SPRINKLER NOTE:

THE ON-SITE PRIVATE SERVICE PIPE SHALL BE INSTALLED TO WITHIN 3' OF THE BUILDING PRIOR TO THE SEPARATION OF THE DOMESTIC AND FIRE SPRINKLER LINES. FIRE SPRINKLER LINE SHALL HAVE A CHECK VALVE(S) AFTER THE SEPARATION POINT.



NOTES:

1. WHERE SIDEWALK IS DIRECTLY BEHIND CURB, LOCATE METER BOX RIGHT BEHIND THE SIDEWALK.
2. WHERE PARKWAY IS DIRECTLY BEHIND CURB, LOCATE METER BOX RIGHT BEHIND THE CURB.
3. PIPE THREADS SHALL BE CLEAN AND SHARP AND SEALED WITH AN APPROVED JOINT COMPOUND.
4. METER SHALL NOT BE PLACED IN DRAINAGE AREA, DEPRESSIONS OR WITHIN TWO FEET OF A DRIVEWAY APPROACH.
5. DISTRICT MAINTAINED: ANGLE METER, METER, METER TAIL, CHECK VALVE, 3" LONG HEX NIPPLE (8) (2)
6. CUSTOMER MAINTAINED: BRASS BALL VALVE

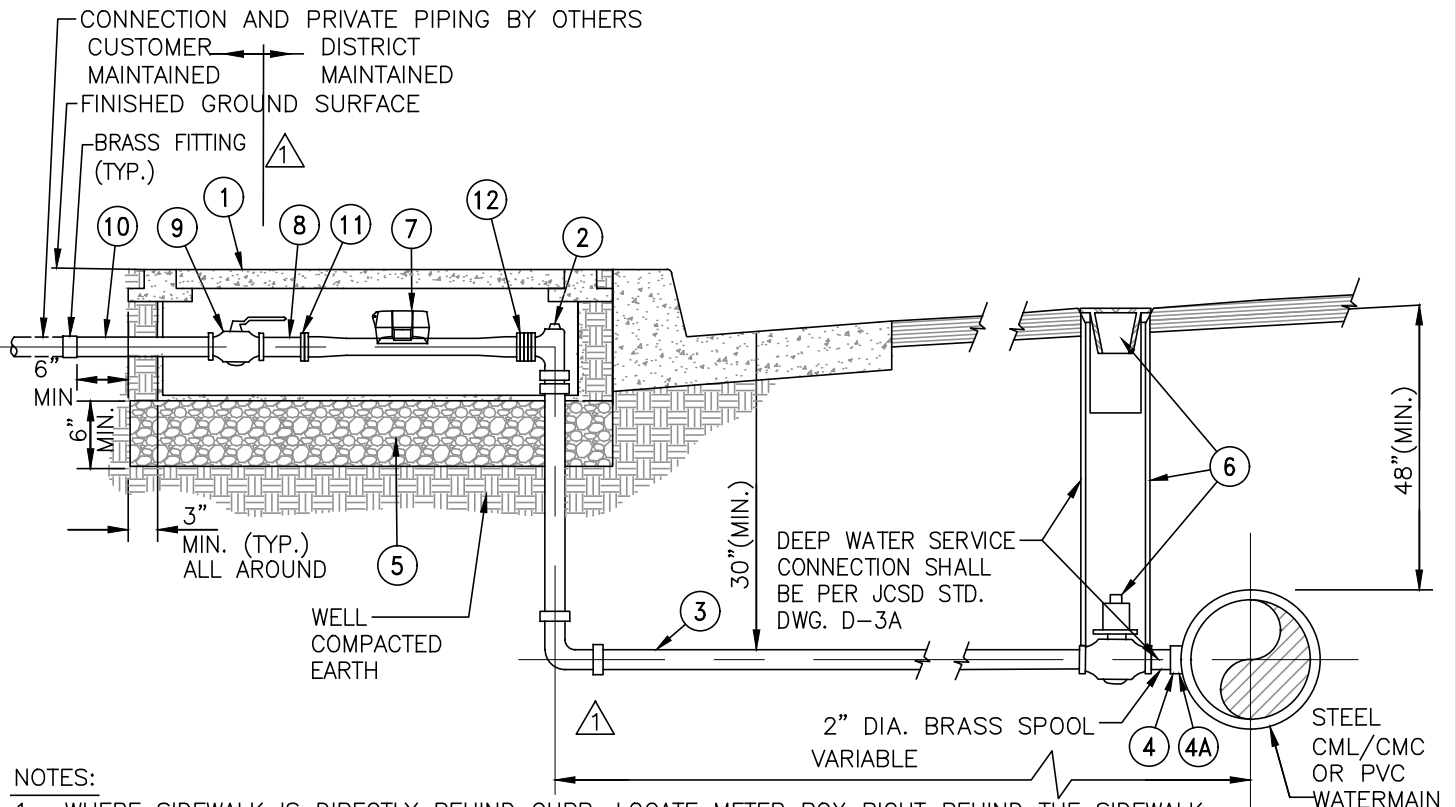
4/2024 STD. DETAIL REVISION

ITEM	DESCRIPTION
(1)	J & R POLYMER CONCRETE METER BOX P-W 6B WITH TWO PIECE COVER OR APPROVED EQUAL. USE METER BOX P-W 6B-20K FOR INCIDENTAL TRAFFIC (H-20) CONDITIONS (FOR E-METER READ, THE METER BOX LID SHALL HAVE QUICK READ PORT, BADGER METER ENDPOINT: ORION CELL-C)
(2)	1" BRONZE BALL ANGLE METER STOP W/ LOCK WING, 1"X3/4" ANGLE STOP FOR 3/4" METER (2)
(3)	1" DIA. PLASTIC COATED COPPER TUBE, TYPE K, COPPER TUBE SHALL BE CONTINUOUS WITH NO JOINTS FROM SERVICE CONNECTION TO RISER.
(4)	WATERMAIN DIA. x 1", SERVICE SADDLE PER DISTRICT SPECIFICATIONS (FOR PVC WATERMAIN) OR BLK. STL. STD. COUPLING TO PIPE W/ COLLAR PER STD. D-6 (FOR STEEL WATERMAIN)
(5)	3/4" DIA. CRUSHED ROCK
(6)	1" DIA. BALL CORP. STOP I.P.T. INLET X PACK JOINT
(7)	SEE APPLICABLE CONSTRUCTION NOTE FOR CORRECT METER, METER TO BE FURNISHED BY CONTRACTOR
(8)	1" DOUBLE MALE THREADED HEX NIPPLE, 3-IN LONG (1) (2)
(9)	1" BRASS BALL VALVE W/ HANDLE
(10)	1" DIA. DUAL CHECK VALVE (WATTS LF07S OR DISTRICT APPROVED EQUAL)
(11)	MIN. 12" BRASS SPOOL WITH PROTECTIVE WRAP
(12)	3/4" x 1" BUSHING FOR 3/4" METER

7/2021 STD. DETAIL REVISION

JURUPA COMMUNITY SERVICES DISTRICT

SCALE: NONE	3/4" OR 1" METER, 1" WATER SERVICE DETAIL (RESIDENTIAL FIRE SPRINKLERS)	DRAWING NO.
DATE: SEPTEMBER 2020		D-1B
APPROVED BY: Sinnaro Yos, P.E. C68607	ALBERT A. WEBB ASSOCIATES CONSULTING ENGINEERS RIVERSIDE CALIFORNIA	W.O. 2023-3229



NOTES:

1. WHERE SIDEWALK IS DIRECTLY BEHIND CURB, LOCATE METER BOX RIGHT BEHIND THE SIDEWALK.
2. WHERE PARKWAY IS DIRECTLY BEHIND CURB, LOCATE METER BOX RIGHT BEHIND THE CURB.
3. PIPE THREADS SHALL BE CLEAN AND SHARP AND SEALED WITH AN APPROVED JOINT COMPOUND.
4. METER SHALL NOT BE PLACED IN DRAINAGE AREA, DEPRESSIONS OR WITHIN TWO FEET OF A DRIVEWAY APPROACH.
5. FOR 2" SERVICE INSTALLATION, SUBSTITUTE 2" DIMENSION WHERE 1-1/2" IS INDICATED.
6. DISTRICT MAINTAINED: ANGLE METER, METER, METER TAIL, CHECK VALVE, 2" NIPPLE
7. CUSTOMER MAINTAINED: BRASS BALL VALVE

ITEM	DESCRIPTION
①	J & R POLYMER CONCRETE METER BOX P-W 6B WITH TWO PIECE COVER OR APPROVED EQUAL. USE METER BOX P-W 6B-20K FOR INCIDENTAL TRAFFIC (H-20) CONDITIONS (FOR E-METER READ, THE METER BOX LID SHALL HAVE QUICK READ PORT, BADGER METER ENDPOINT: ORION CELL-C)
②	2" DIA. BRONZE BALL ANGLE METER STOP W/ LOCK WING AND 2" OVAL FLANGE
③	2" DIA. PLASTIC COATED COPPER PIPE, TYPE K, COPPER PIPE WITH BRONZE FITTING (PACK JOINT) ⚠
④	BLK. STL. STD. COUPLING TO PIPE W/ COLLAR PER STD. D-6 (FOR STEEL WATERMAIN) ⚠
④A	WATERMAIN DIA. x 2", SERVICE SADDLE PER DISTRICT SPECIFICATIONS (FOR PVC WATERMAIN)
⑤	3/4" DIA. CRUSHED ROCK
⑥	2" DIA. QUARTER TURN BALL VALVE W/ 2" SQ. OPERATING NUT, 6" DIA. VALVE CAN PER STD. DWG. B-1 (M.I.P. X COMPRESSION)
⑦	SEE APPLICABLE CONSTRUCTION NOTE FOR CORRECT METER, METER TO BE FURNISHED BY CONTRACTOR
⑧	1-1/2" DIA. BRASS PIPE
⑨	1-1/2" BRASS BALL VALVE W/ HANDLE. NOTE: NOT REQUIRED IF BACKFLOW ASSEMBLY IS REQUIRED
⑩	MIN. 12" BRASS SPOOL WITH PROTECTIVE WRAP
⑪	OVAL SHAPED FLANGE TO MATCH METER
⑫	2" OVAL FL. ADAPTER, 2"x1-1/2" BUSHING, 1-1/2" OVAL FL. ADAPTER

JURUPA COMMUNITY SERVICES DISTRICT

1-1/2" METER, 2" WATER SERVICE DETAIL

DRAWING NO.
D-2

SCALE: NONE

DATE: SEPTEMBER 2020

APPROVED BY:

ALBERT A. WEBB ASSOCIATES
CONSULTING ENGINEERS

Sinnaro Yos, P.E. C68607

RIVERSIDE

CALIFORNIA

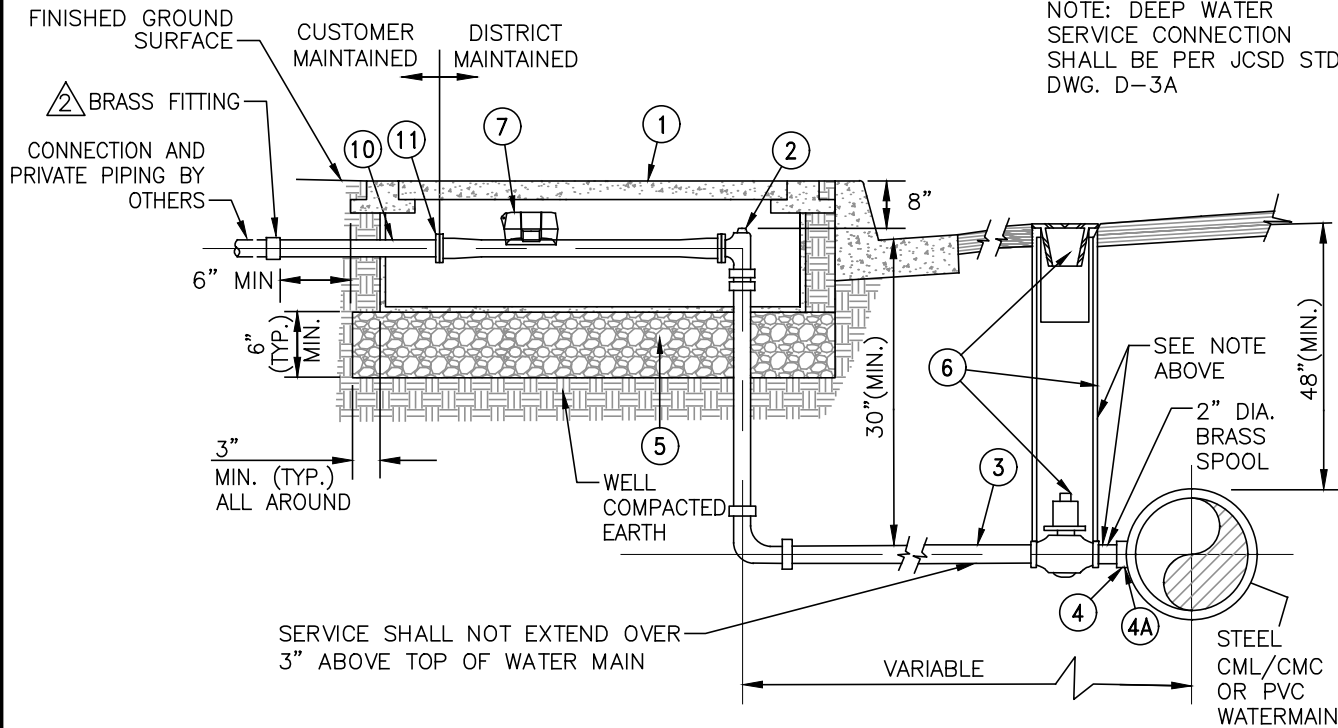
W.O. 2023-3229

4/2024 STD. DETAIL REVISION

⚠

REV.

NOTE: DEEP WATER SERVICE CONNECTION SHALL BE PER JCSD STD. DWG. D-3A



NOTES:

1. WHERE SIDEWALK IS DIRECTLY BEHIND CURB, LOCATE METER BOX RIGHT BEHIND THE SIDEWALK.
2. WHERE PARKWAY IS DIRECTLY BEHIND CURB, LOCATE METER BOX RIGHT BEHIND THE CURB.
3. PIPE THREADS SHALL BE CLEAN AND SHARP AND SEALED WITH AN APPROVED JOINT COMPOUND.
4. METER SHALL NOT BE PLACED IN DRAINAGE AREA, DEPRESSIONS OR WITHIN TWO FEET OF A DRIVEWAY APPROACH.
5. PROVIDE 2" BRASS BALL VALVE W/ HANDLE BEHIND METER IN METER BOX IF BACKFLOW DEVICE IS NOT INSTALLED.
6. COMPOUND METER REQUIRES A SEPARATE BOX.

4/2024 STD. DETAIL REVISION

ITEM	DESCRIPTION
①	J & R POLYMER CONCRETE METER BOX P-W 6B WITH TWO PIECE COVER OR APPROVED EQUAL. USE METER BOX P-W 6B-20K FOR INCIDENTAL TRAFFIC (H-20) CONDITIONS (FOR E-METER READ, THE METER BOX LID SHALL HAVE QUICK READ PORT, BADGER METER ENDPOINT: ORION CELL-C) △
②	2" DIA. BRONZE BALL ANGLE METER STOP W/LOCK WING AND 2" OVAL FLANGE
③	2" DIA. PLASTIC COATED COPPER PIPE, TYPE K, COPPER PIPE WITH BRONZE FITTING (PACK JOINT) △
④	BLK. STL. STD. COUPLING TO PIPE W/ COLLAR PER STD. D-6 (FOR STEEL WATERMAIN)
④A	WATERMAIN DIA. x 2", SERVICE SADDLE PER DISTRICT SPECIFICATIONS (FOR PVC WATERMAIN)
⑤	3/4" DIA. CRUSHED ROCK
⑥	2" DIA. QUARTER TURN BALL VALVE (MIP X COMPRESSION) W/ 2" SQ. OPERATING NUT, 6" DIA. VALVE CAN PER STD. DWG. B-1
⑦	SEE APPLICABLE CONSTRUCTION NOTE FOR CORRECT METER, METER TO BE FURNISHED BY CONTRACTOR
⑧	NOT USED
⑨	NOT USED
⑩	2" BRASS PIPE WITH PROTECTIVE WRAP, FIELD ADJUST
⑪	OVAL SHAPED FLANGE TO MATCH METER

7/2021 STD. DETAIL REVISION

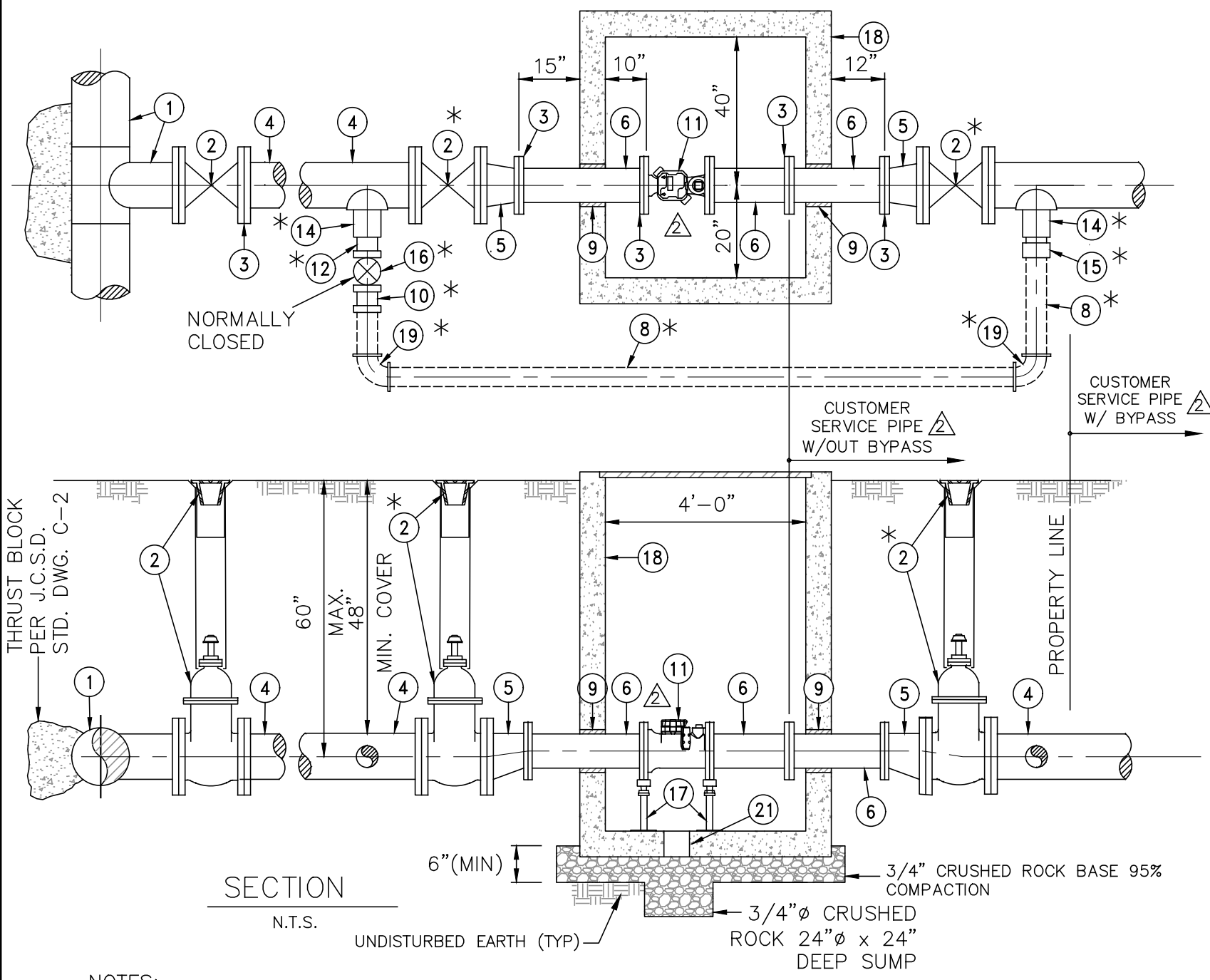
JURUPA COMMUNITY SERVICES DISTRICT

SCALE: NONE	2" METER,	DRAWING NO.
DATE: SEPTEMBER 2020	2" WATER SERVICE DETAIL	D-3
APPROVED BY: Sinnaro Yos, P.E. C68607	ALBERT A. WEBB ASSOCIATES CONSULTING ENGINEERS RIVERSIDE CALIFORNIA	W.O. 2023-3229

REV.

4/2024 STD. DETAIL REVISION

7/2021 STD. DETAIL REVISION



ITEM	DESCRIPTION
1	MAINLINE DIA. X 4" DIA (A.W.W.A.) FLANGED OUTLET TEE PER STD. C-6.
2	6" DIA. VALVE BOX & 4" GATE VALVE INSTALLATION PER J.C.S.D. STD. DWG. NO. B-1.
3	150# SLIP ON FLANGE (TYPICAL).
4	4" DIA. CML/CMC W.S.P. (10 GA. MIN.)
5	4" x 3" "FLAT TOP" FLANGED REDUCER CML/CMC (10 GA. MIN.)
6	3" STEEL CML/CMC PIPE (10 GA. MIN.)
7	REMOVE AN ADEQUATE AMOUNT OF CMC TO ALLOW PROPER INSTALLATION OF THE FLANGED COUPLING ADAPTOR. PAINT BARE METAL PER NOTE 5.
8	2" BRASS PIPE BY-PASS PIPE. (ONLY WHERE REQUIRED BY DISTRICT).
9	KNOCKOUTS AS REQUIRED (2" LARGER THAN PIPE SIZE O.D. ALL AROUND) DRY PACK ALL AROUND PIPE.
10	2" BRASS NIPPLE, THREADED ONE END (12" LONG).
11	SEE APPLICABLE CONSTRUCTION NOTE FOR CORRECT METER, METER TO BE FURNISHED BY CONTRACTOR
12	2" BRASS NIPPLE (THREADED BOTH ENDS).
13	FLANGED COUPLING ADAPTOR, SMITH-BLAIR NO. 913 OR APPROVED EQUAL.
14	2" COUPLING/REINFORCEMENT PER STD. D-6.
15	2" BRASS THREAD x SOCKET ADAPTOR.
16	2" BRONZE HEAVY DUTY CURB STOP (INSIDE I.P.T. x INSIDE I.P.T.) WITH VALVE BOX PER STD B-1.
17	PIPE SUPPORT PER J.C.S.D. STD. DWG. NO. A-5.
18	PRE-CAST CONC. VAULT 5'x6' W/2 PIECE 4'x 6' TORSION HINGED GALV. OR ALUM. COVER, W/6"x 6" METER READING LID, QUICKSET OR APPR'D. EQUAL. COVER TO BE SPECIFIED FOR TRAFFIC LOADS WHERE REQ'D. COVERS TO BE EQUIPPED WITH SAFETY CHAINS TO LIMIT COVER TRAVEL TO A MAXIMUM OF 10" BEYOND THE VERTICAL POSITION WHEN FULLY OPENED. NOTE: DEPENDENT UPON SELECTED METER DIMENSIONS VAULT SIZE MAY NEED TO BE INCREASED TO MAINTAIN MINIMUM INTERNAL CLEARANCE DIMENSIONS SHOWN.
19	2" BRASS ELBOW
20	NOT USED
21	6" DIA. SUMP

SECTION
N.T.S.

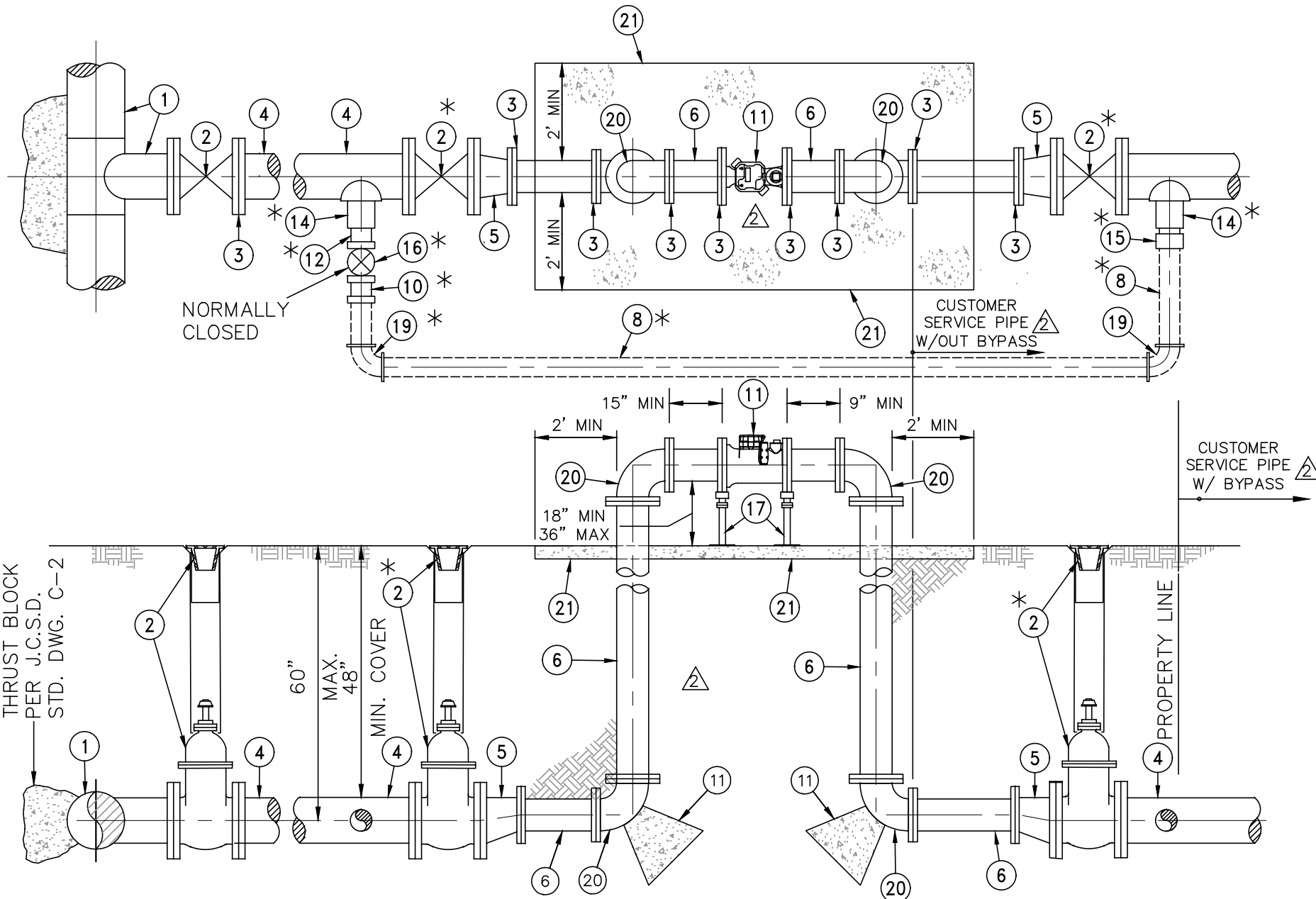
NOTES:

1. THE WATER SERVICE VAULT SHALL BE LOCATED & INSTALLED SUBJECT TO APPROVAL OF THE DISTRICT. WHERE VAULT IS INSTALLED IN PARKWAY WITH CURB & SIDEWALK, THE VAULT SHALL BE PLACED PARALLEL TO THE CURB LINE & PIPING.
2. ADJUST VAULT AND COVER TO MEET SIDEWALK AND CURB GRADE.
3. ALL FIELD JOINTS SHALL BE FLANGED UNLESS OTHERWISE INDICATED. ALL WELDED JOINTS ON EPOXY LINED STD. WT. PIPE SHALL BE SHOP FABRICATED AND ALL EPOXY LINING SHALL BE SHOP APPLIED.
4. PIPE THREADS SHALL BE CLEAN AND SHARP AND SEALED WITH APPROVED JOINT COMPOUND.
5. ALL BARE METAL INSIDE THE VAULT SHALL BE PAINTED WITH PRIMER AND TWO (2) COATS OF PAINT PER DISTRICT SPECIFICATIONS. NO PRIMER ON BRASS OR BRONZE.
6. SHOULD THE DEPTH OF THE VAULT EXCEED FOUR (4) FEET, AN OSHA APPROVED LADDER ATTACHED TO AN INSIDE WALL SHALL BE PROVIDED. THE LOCATION OF THE LADDER SHALL BE AS DIRECTED BY THE DISTRICT.

* ONLY IF REQUIRED; AT OPTION OF DISTRICT. IF NO BY-PASS IS INSTALLED THE 4" DIA. GATE VALVE DOWNSTREAM OF THE METER IS NOT REQUIRED AND THE DISTRICT'S MAINTENANCE STOPS AT THE METER.

JURUPA COMMUNITY SERVICES DISTRICT		
SCALE:	3" WATER SERVICE METER	DRAWING NO.
DATE: SEPTEMBER 2020		D-4
APPROVED BY:	ALBERT A. WEBB ASSOCIATES CONSULTING ENGINEERS	
Sinnaro Yos, P.E. C68607	RIVERSIDE CALIFORNIA	W.O. 2023-3229

REV. 7/2021 STD. DETAIL REVISION
 4/2024 STD. DETAIL REVISION



SECTION

NOTES:

- N.T.S.
1. THE ABOVE GROUND WATER SERVICE SHALL BE LOCATED & INSTALLED SUBJECT TO APPROVAL OF THE DISTRICT. WHERE METER IS INSTALLED IN PARKWAY WITH CURB & SIDEWALK, THE VAULT SHALL BE PLACED PARALLEL TO THE CURB LINE & PIPING.
 2. ADJUST CONCRETE PAD TO MEET SIDEWALK AND CURB GRADE.
 3. ALL FIELD JOINTS SHALL BE FLANGED UNLESS OTHERWISE INDICATED. ALL WELDED JOINTS ON EPOXY LINED STD. WT. PIPE SHALL BE SHOP FABRICATED AND ALL EPOXY LINING SHALL BE SHOP APPLIED.
 4. PIPE THREADS SHALL BE CLEAN AND SHARP AND SEALED WITH APPROVED JOINT COMPOUND.
 5. ALL BARE METAL INSIDE THE VAULT SHALL BE PAINTED WITH PRIMER AND TWO (2) COATS OF PAINT PER DISTRICT SPECIFICATIONS. NO PRIMER ON BRASS OR BRONZE.
 6. SHOULD THE DEPTH OF THE VAULT EXCEED FOUR (4) FEET, AN OSHA APPROVED LADDER ATTACHED TO AN INSIDE WALL SHALL BE PROVIDED. THE LOCATION OF THE LADDER SHALL BE AS DIRECTED BY THE DISTRICT.

ITEM	DESCRIPTION
1	MAINLINE DIA. X 4" DIA (A.W.W.A.) FLANGED OUTLET TEE PER STD. C-6.
2	6" DIA. VALVE BOX & 4" GATE VALVE INSTALLATION PER J.C.S.D. STD. DWG. NO. B-1.
3	150# SLIP ON FLANGE (TYPICAL).
4	4" DIA. CML/CMC W.S.P. (10 GA. MIN.)
5	4" x 3" "FLAT TOP" FLANGED REDUCER CML/CMC (10 GA. MIN.)
6	3" STEEL CML/CMC PIPE (10 GA. MIN.) FOR BELOW GRADE AND 3" STD. WT. STL. FUSION BONDED EPOXY LINED OUTSIDE PAINTED FOR ABOVE GRADE.
7	REMOVE AN ADEQUATE AMOUNT OF CMC TO ALLOW PROPER INSTALLATION OF THE FLANGED COUPLING ADAPTOR. PAINT BARE METAL PER NOTE 5.
8	2" BRASS PIPE BY-PASS PIPE. (ONLY WHERE REQUIRED BY DISTRICT).
9	KNOCKOUTS AS REQUIRED (2" LARGER THAN PIPE SIZE O.D. ALL AROUND) DRY PACK ALL AROUND PIPE.
10	2" BRASS NIPPLE, THREADED ONE END (12" LONG)
11	SEE APPLICABLE CONSTRUCTION NOTE FOR CORRECT METER, METER TO BE FURNISHED BY CONTRACTOR
12	2" BRASS NIPPLE (THREADED BOTH ENDS).
13	FLANGED COUPLING ADAPTOR, SMITH-BLAIR NO. 913 OR APPROVED EQUAL.
14	2" COUPLING/REINFORCEMENT PER STD. D-6.
15	2" BRASS THREAD x SOCKET ADAPTOR.
16	2" BRONZE HEAVY DUTY CURB STOP (INSIDE I.P.T. x INSIDE I.P.T.) WITH VALVE BOX PER STD B-1.
17	PIPE SUPPORT PER J.C.S.D. STD. DWG. NO. A-5.
18	PRE-CAST CONC. VAULT 5'x6' W/2 PIECE 4'x 6' TORSION HINGED GALV. OR ALUM. COVER, W/6"x 6" METER READING LID, QUICKSET OR APPR'D. EQUAL. COVER TO BE SPECIFIED FOR TRAFFIC LOADS WHERE REQ'D. COVERS TO BE EQUIPPED WITH SAFETY CHAINS TO LIMIT COVER TRAVEL TO A MAXIMUM OF 10" BEYOND THE VERTICAL POSITION WHEN FULLY OPENED. NOTE: DEPENDENT UPON SELECTED METER DIMENSIONS VAULT SIZE MAY NEED TO BE INCREASED TO MAINTAIN MINIMUM INTERNAL CLEARANCE DIMENSIONS SHOWN.
19	2" BRASS ELBOW
20	90° FLANGED STD. WT. ELBOW (FUSION BONDED EPOXY LINED, OUTSIDE PAINTED).
21	6" MIN. THICK CONCRETE PAD W/ 6"X6" 10 GA. W.W.M.

* ONLY IF REQUIRED; AT OPTION OF DISTRICT. IF NO BY-PASS IS INSTALLED THE 4" DIA. GATE VALVE DOWNSTREAM OF THE METER IS NOT REQUIRED AND THE DISTRICT'S MAINTENANCE STOPS AT THE METER.

JURUPA COMMUNITY SERVICES DISTRICT

SCALE:	3" WATER SERVICE METER	DRAWING NO.
DATE: SEPTEMBER 2020		D-4A
APPROVED BY:	ALBERT A. WEBB ASSOCIATES CONSULTING ENGINEERS	
Sinnaro Yos, P.E. C68607	RIVERSIDE CALIFORNIA	W.O. 2023-3229