

FRAME & COVER SETTING CONDITIONS

* DETAIL FOR MANHOLES IN PAVED ROADWAY DETAIL FOR MANHOLES IN EASEMENT

1' WIDE CLASS "B" FIBER REINFORCED BLACK IN COLOR CONCRETE COLLAR TO FULL DEPTH OF GRADE RINGS

SEE MANHOLE COVER NOTES ON SHEET 2

FINISH SURFACE

6'X6' SQUARE CLASS "B" CONCRETE SLAB, 6" MIN. THICK

EXIST. GROUND

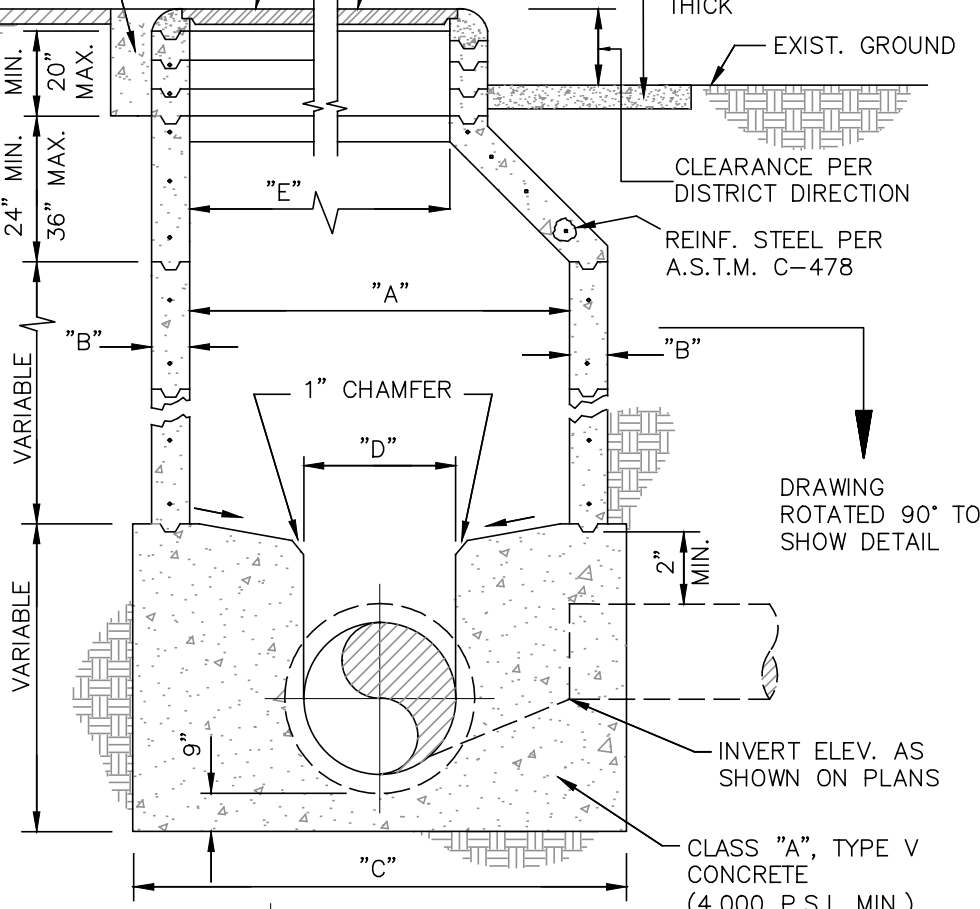
* FOR MANHOLES IN DIRT ROADWAYS ADD 6" THICK X 6'-0" SQ. CL. "B" CONC. SLAB FLUSH WITH FINISH GRADE.

CLEARANCE PER DISTRICT DIRECTION

REINF. STEEL PER A.S.T.M. C-478

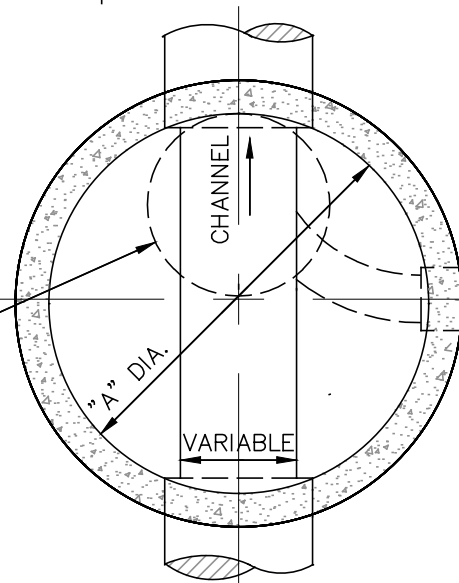
DRAWING ROTATED 90° TO SHOW DETAIL

DRAWING ROTATED 90° TO SHOW DETAIL



DIMENSION TABLE				
M.H. DIA.	A	B	C	E
4'	48"	6"	5'-6"	30"
5'	60"	6"	6'-6"	30"

CLASS "A", TYPE V CONCRETE (4,000 P.S.I. MIN.)



A MIN. INSIDE DIA. OF 60" SHALL BE REQ'D. FOR PIPELINES DEEPER THAN 15' AND/OR FOR SEWER DIAMETERS 15 INCH AND LARGER

ALL MANHOLE TOPS SHALL BE INSTALLED WITH MANHOLE COVER OVER DOWNSTREAM OUTLET, EXCEPT AS OTHERWISE NOTED.

MANHOLE COVERS SHALL HAVE THE FOLLOWING WRITING ON THE CENTER OF THE COVER :
 JCSD
 SEWER
 MONITORING MANHOLE COVERS SHALL HAVE THE FOLLOWING WRITING ON THE CENTER OF THE COVER:
 SEWER

JURUPA COMMUNITY SERVICES DISTRICT

SCALE: NONE

DATE: SEPTEMBER 2020

PRECAST CONCRETE MANHOLE

DRAWING NO.

S-7

APPROVED BY:

Sinnaro Yos
 Sinnaro Yos, P.E. C68607

ALBERT A. WEBB ASSOCIATES
 CONSULTING ENGINEERS

SHEET 1 OF 2

REV.

RIVERSIDE

CALIFORNIA

W.O. 19-0248

NOTES:

1. ALL SECTIONS TO BE WASHED TO REMOVE ANY LOOSE MATERIAL. PRECAST MANHOLE SECTIONS AND GRADE RINGS SHALL BE SEALED WITH CS-102B BUTYL/BITUMEN BLENDED SEALANT AS MANUFACTURED BY CONSEAL OF NEW CARLISLE, OHIO OR DISTRICT APPROVED EQUAL TO FORM WATERTIGHT JOINTS.
2. CONCRETE FOR MANHOLE SECTIONS SHALL BE 4,000 P.S.I. MIN. USING TYPE V CEMENT.
3. PROVIDE REPAIR BAND COUPLING WITH ADJUSTABLE SHIELDED S.S. SHEAR RING JOINT IN ALL V.C.P. SEWER PIPES OUTSIDE OF MANHOLE BUT WITHIN 12" OF CONCRETE BASE.
4. WHEN INSTALLING REINFORCED CONCRETE GRADE RING(S) 3"-6" THE GRADE RINGS MUST BE CLEAN AND ANCHORED TO BOTH THE FRAME AND GRADE RING(S) OR CONE WITH RAM-NEK JOINT SEALER OR SEALANT AS RECOMMENDED BY MANUFACTURER FOR WATERTIGHT CONNECTION AS APPROVED BY THE DISTRICT. INTERIOR OF GRADE RINGS SHALL BE SMOOTHLY MORTARED.
5. MORTAR AROUND AND UNDER FRAME SHALL BE CURED WITH A PIGMENTED CURING COMPOUND MEETING THE REQUIREMENTS OF SECTION 90-7 OF STATE OF CALIFORNIA DEPARTMENT OF TRANSPORTATION STANDARD SPECIFICATIONS, 2006 EDITION.
6. FOR PVC CONNECTIONS TO EXISTING AND NEW PRECAST REINFORCED CONCRETE MANHOLES. A HOLE SPECIFIC TO THE NEW PIPE'S O.D. DIA. SHALL BE CORED INTO THE CONCRETE MANHOLE WALL TO RECEIVE THE PIPE. A KOR-N-SEAL BOOT OR ENGINEER APPROVED EQUAL SHALL BE CLAMPED INTO THE CORED HOLE AND USED TO MAKE THE CONNECTION.
7. SHELF AND GROOVE SHALL BE FORMED MONOLITHICALLY WITH THE MANHOLE BASE. CHANNELS TO BE SMOOTH FINISH.
8. NO FLY ASH ALLOWED ON CONCRETE COLLAR AS ADDED MIXTURE AGENT.
9. MANHOLE SHALL BE VACUUM TESTED PER DISTRICT SPECIFICATIONS.

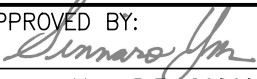
MANHOLE COVER NOTES:

MANHOLE COVER AND FRAME, TO BE COMPOSITE MATERIAL, EJ SERIES, (30") 3200 AND (36") 3800 WITH FOUR (4) TITUS TWISTLIFT STAINLESS STEEL LOCKS, PER COVER. "NOTE" AFTER SETTING A COMPOSITE FRAME IN PLACE AND PRIOR TO POURING THE CONCRETE COLLAR AND/OR CONCRETE SLAB, INSTALL ONE (1) #4 REBAR SHAPED INTO A FULL CIRCLE THREE (3") INCHES LARGER IN O.D. THAN THE COMPOSITE FRAME. AFTER FORMING THE #4 REBAR CIRCLE, IT SHALL THAN BE SET TO THREE (3") INCHES BELOW THE FRAME RIM ELEVATION THEN ENCAPSULATED IN THE CONCRETE COLLAR AND/OR CONCRETE SLAB.

SPECIAL MANHOLE COVER CONDITIONS

1. FOR MANHOLES IN EASEMENTS, UNPAVED AREAS, OR ANY AREA WHERE SECURITY IS A DISTRICT CONCERN BUT WATER INFLOW IS NOT AN ISSUE USE EJ SERIES OR APPROVED EQUAL.
2. FOR MANHOLES IN EASEMENTS, UNPAVED AREAS, STREET OR ANY AREA WHERE WATER INFLOW IS A POTENTIAL ISSUE AND/OR WHERE SECURITY IS A DISTRICT CONCERN AND WHEN DIRECTED AND APPROVED BY DISTRICT, USE DISTRICT STANDARD DRAWING NO. S-23.

JURUPA COMMUNITY SERVICES DISTRICT

SCALE: NONE		PRECAST CONCRETE MANHOLE	DRAWING NO.
DATE: SEPTEMBER 2020			S-7
REV.	APPROVED BY: 	ALBERT A. WEBB ASSOCIATES CONSULTING ENGINEERS	SHEET 2 OF 2
	Sinnaro Yos, P.E. C68607	RIVERSIDE CALIFORNIA	W.O. 19-0248