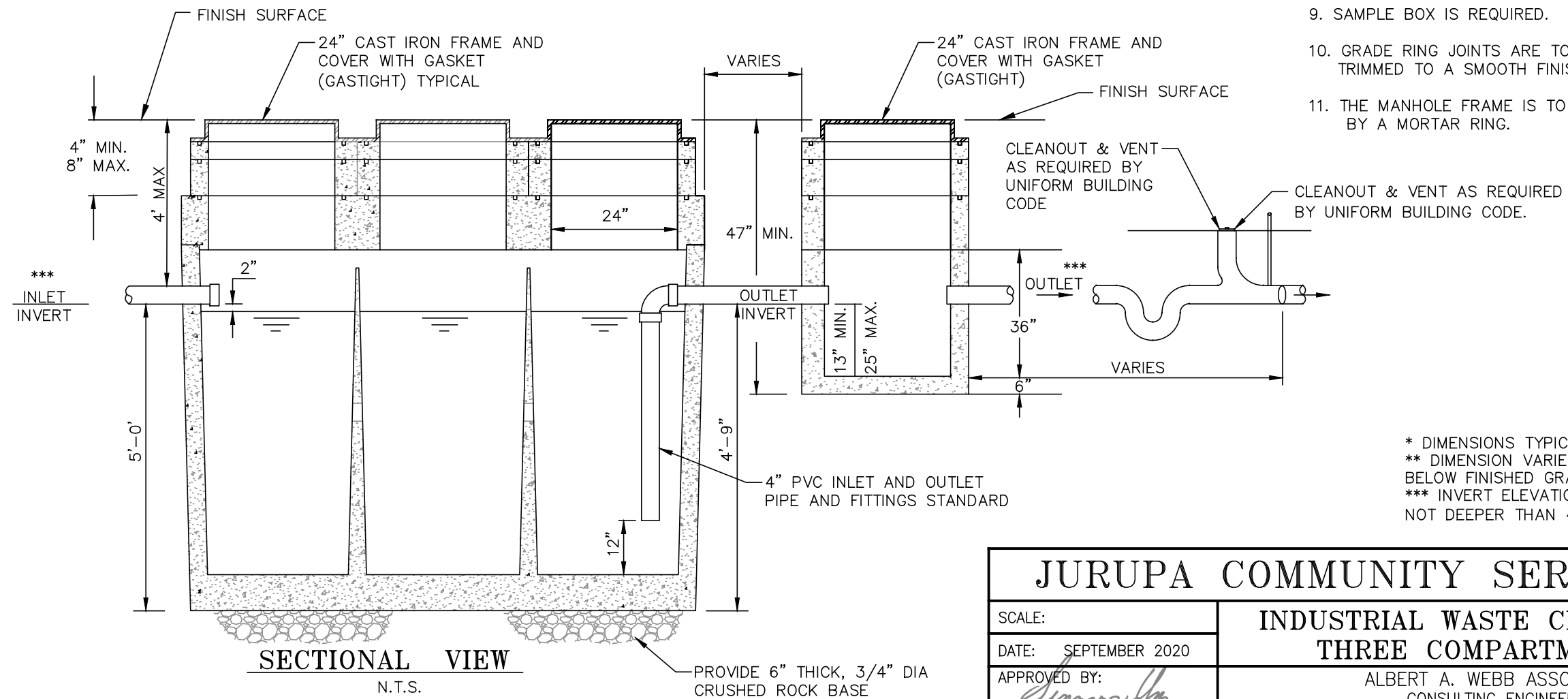


COVER AND RISERS REMOVED
PLAN VIEW
 N.T.S.

NOTES :

1. DOMESTIC SEWAGE CONNECTION IS TO BE MADE DOWNSTREAM OF CLARIFIER'S SAMPLE BOX.
2. PRECAST CONCRETE VAULT INCLUDING TOP AND COVERS TO BE DESIGNED FOR A MIN. H-20 TRAFFIC LOADING. SQUARE COVERS ARE NOT ACCEPTABLE.
3. ALL PIPE AND FITTINGS TO BE CAST IRON OR PVC PIPE.
4. MINIMUM APPROVED CAPACITY IS 750 GALLONS. A LARGER CLARIFIER MAY BE REQUIRED BASED ON INDUSTRIAL EFFLUENT QUANTITY AND QUALITY.
5. WASTE DISCHARGE APPLICANT IS RESPONSIBLE FOR THE PURCHASE, INSTALLATION, OPERATION AND MAINTENANCE OF THE CLARIFIER.
6. APPROVED SUPPLIERS FOR CLARIFIER:
 - a. PYRAMID PRECAST CO. INC. RIALTO, CA.
 - b. M.C. NOTTINGHAM CO., PASADENA, CA.
 - c. UTILITY VAULT CO. FONTANA, CA.
 - d. JENSEN PRECAST CO. FONTANA, CA.
7. UPON DISTRICT APPROVAL, A TWO COMPARTMENT CLARIFIER MAY BE USED IN LIEU OF THE THREE COMPARTMENT.
8. LOCATION OF CLARIFIER IS SUBJECT TO APPROVAL BY DISTRICT.
9. SAMPLE BOX IS REQUIRED.
10. GRADE RING JOINTS ARE TO BE SEALED WITH 1:2 MORTAR, TRIMMED TO A SMOOTH FINISH INSIDE AND OUT.
11. THE MANHOLE FRAME IS TO BE SEALED WITH AND SECURED BY A MORTAR RING.



SECTIONAL VIEW
 N.T.S.

* DIMENSIONS TYPICAL OF 1000 GALLON CAPACITY CLARIFIER.
 ** DIMENSION VARIES DEPENDING ON DEPTH OF EFFLUENT LINE BELOW FINISHED GRADE.
 *** INVERT ELEVATION SHALL BE AS SHALLOW AS POSSIBLE, NOT DEEPER THAN 4' FROM FINISH SURFACE ELEVATION.

JURUPA COMMUNITY SERVICES DISTRICT

SCALE:	INDUSTRIAL WASTE CLARIFIER THREE COMPARTMENT	DRAWING NO.
DATE: SEPTEMBER 2020		S-12
APPROVED BY: <i>Sinnaro Yos</i>	ALBERT A. WEBB ASSOCIATES CONSULTING ENGINEERS	
Sinnaro Yos, P.E. C68607	RIVERSIDE	CALIFORNIA
		W.O. 19-0248

REV.