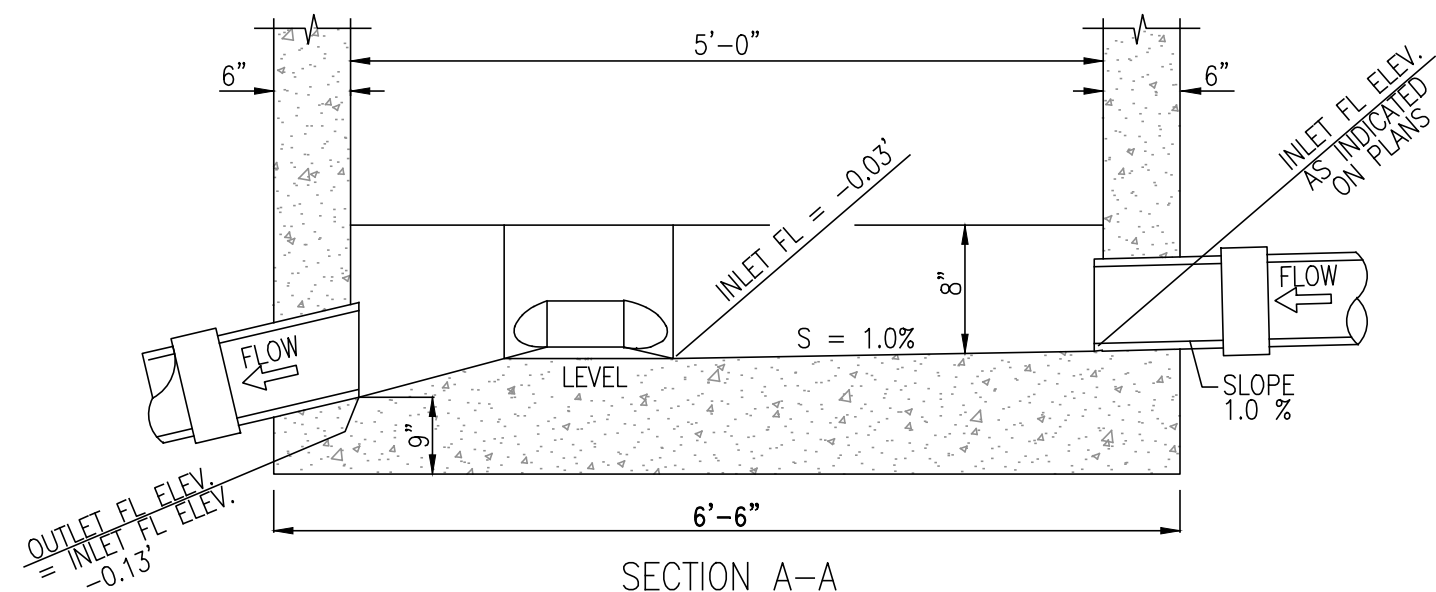


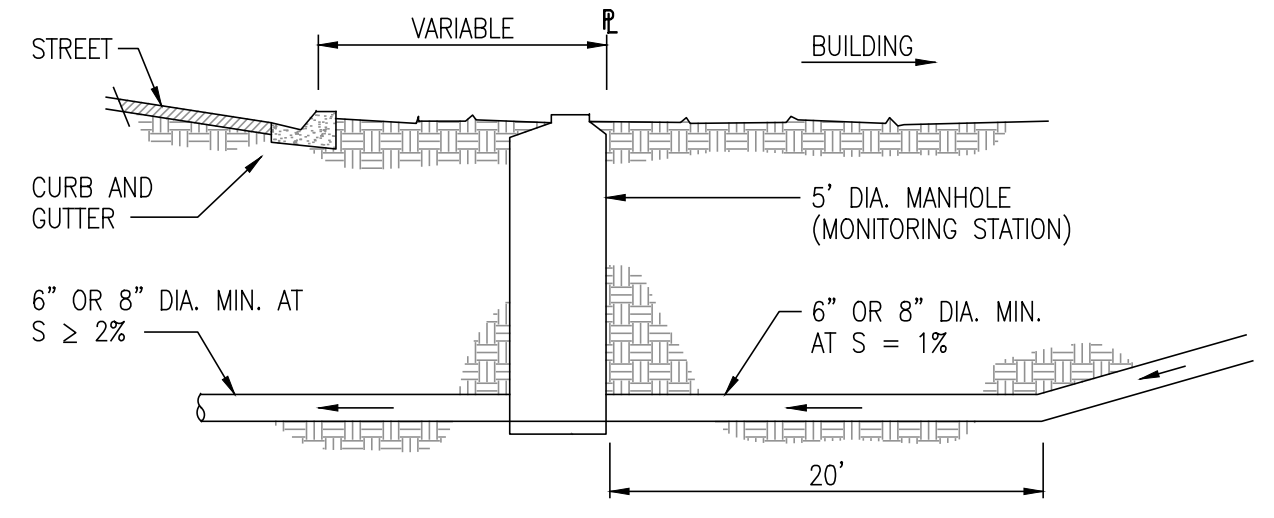
CORE DRILL OPENING FOR 3/4" RIGID CONDUIT (SEAL ENDS)

CONDUIT & CABLE TO MONITOR LOCATION— MOUNT ON OUTSIDE WALL OF BUILDING OR OUTSIDE ON MOUNTING POSTS PER DISTRICT REQUIREMENTS HEREON

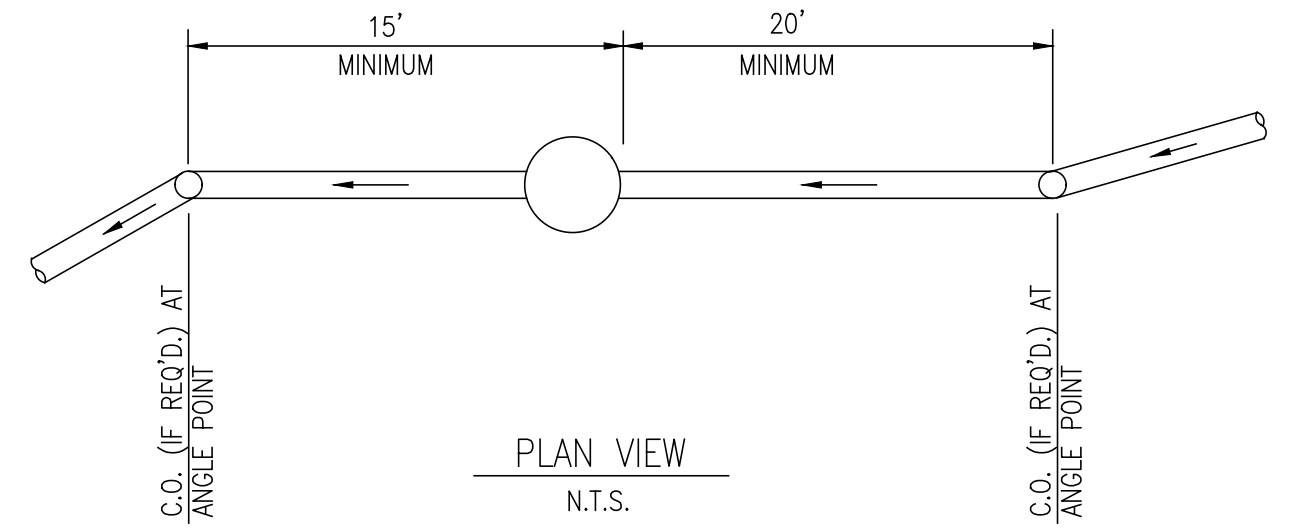
PLAN VIEW
N.T.S.



SECTION A-A
N.T.S.



PROFILE VIEW
N.T.S.



PLAN VIEW
N.T.S.

WASTEWATER MONITORING STATION'S MAXIMUM FLOW= 0.2658 mgd
SEE SHEET 2 OF 6 FOR GENERAL AND CONSTRUCTION NOTES.

MANHOLE BASE SHALL BE MONOLITHICALLY POURED.

JURUPA COMMUNITY SERVICES DISTRICT

SCALE:	WASTEWATER FLOW MONITORING STATION	DRAWING NO.
DATE: SEPTEMBER 2020		S-11
APPROVED BY: <i>Sinnaro Yos</i>	ALBERT A. WEBB ASSOCIATES CONSULTING ENGINEERS	SHEET 1 OF 6
Sinnaro Yos, P.E. C68607	RIVERSIDE CALIFORNIA	W.O. 19-0248

REV.

CONSTRUCTION NOTES:

- ① 36" DIA. FRAME AND COVER PER ALHAMBRA FOUNDRY, NO. A-1325 OR APPROVED EQUAL OR MANHOLE COVER REQUIRED BY SPECIAL MANHOLE CONDITIONS IN DISTRICT STANDARD DRAWING NO. S-7.
- ② 6" OR 8" DIA. (TO MATCH SEWER PIPELINE SIZE) PALMER-BOWLUS FLUME INSTALLED PER MANUFACTURER'S RECOMMENDATIONS PLASTI-FAB, INC., OR APPROVED EQUAL.
- ③ REPAIR BAND COUPLING WITH ADJUSTABLE STAINLESS STEEL SHIELDED SHEAR RING.
- ④ FLOW TRANSCIEVER IN AN E.P. NON-CORROSION ENCLOSURE COMPLETE WITH A NON-CONTACT SENSOR WITH HOUSING EQUIPPED WITH CABLE TO THE TRANSCIEVER AND 500' (MAX) CABLE FROM THE TRANSCIEVER TO THE FLOWMETER PANEL. THIS SET SHALL BE APPROVED FOR CLASS 1, DIVISION 1 LOCATION. GREYLINE OCF 5.0 ULTRASONIC FLOW METER OR DISTRICT APPRV'D. EQUAL.
- ⑤ POINT OF MEASUREMENT.
- ⑥ SECURE TRANSENSOR CABLE CONDUIT (RIGID STEEL PVC COATED) TO WALL OF MANHOLE WITH T316 STAINLESS STEEL STRAPS 48"± O.C.
- ⑦ 3/4" DIA. RIGID STEEL PVC COATED CONDUIT WITH PVC COATED COUPLINGS AS REQUIRED.
- ⑧ STAINLESS STEEL (316) CONDUIT SUPPORTS AS REQUIRED.
- ⑨ EXPLOSION PROOF JUNCTION BOX WITH SEALING COVER PVC COATED.
- ⑩ RIGID STEEL PVC COATED SWEEP WITH PVC COATED COUPLINGS AS REQUIRED.
- ⑪ STAINLESSSTEEL (316) FLOOR MOUNTING BRACKET SECURED TO FLOOR WITH STAINLESS STEEL BOLTS.

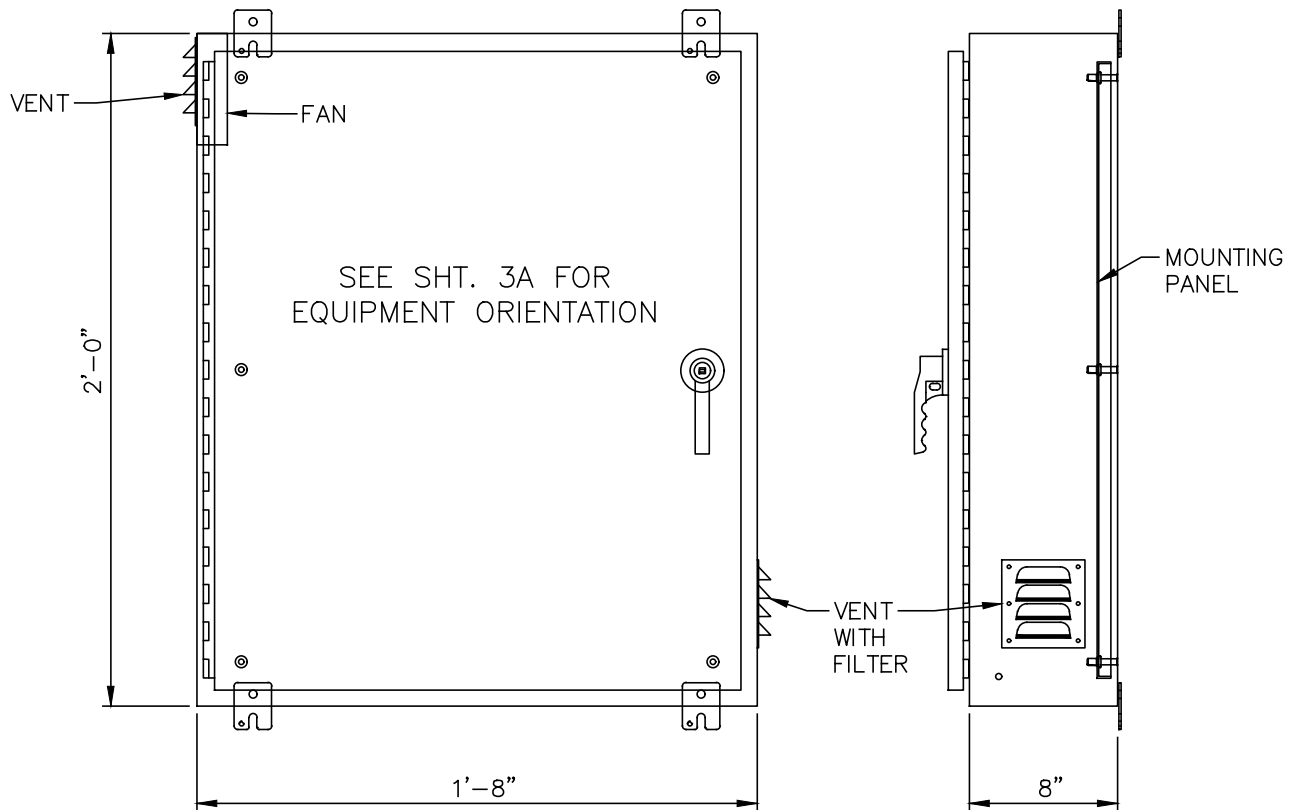
NOTE: FOR MANHOLES IN LANDSCAPED AREAS, ADD 6" THICK x 6'-0" SQ. CLASS B CONCRETE SLAB, FLUSH W/FINISHED GRADE.

GENERAL NOTES:

1. MANHOLE SHALL BE A PRECAST CONCRETE ECCENTRIC MANHOLE (5'-0" DIA.) WITH A 36" DIA. OPENING.
2. PROVIDE AND INSTALL ALL MATERIALS IN CONFORMANCE WITH THE NATIONAL ELECTRICAL CODE, CALIFORNIA ADMINISTRATION CODE, TITLE 8, AND LOCAL CODES AND REGULATIONS. INSTALL ALL EQUIPMENT IN ACCORDANCE WITH THE REQUIREMENTS OF THE INSPECTING AUTHORITY AND THE MANUFACTURER'S RECOMMENDATIONS.
3. PROVIDE THE SERVICES OF THE INSTRUMENT AND/OR SYSTEM SUPPLIER TO CHECK THE INSTALLATION, CALIBRATE, START UP AND DEBUG THE SYSTEM AND TRAIN THE OWNER'S PERSONNEL. PROVIDE AT LEAST FOUR (4) SETS OF INSTALLATION, OPERATION, AND MAINTENANCE MANUALS OF THE SYSTEM. PROVIDE CALIBRATION REPORT TO DISTRICT AFTER INSTALLATION.
4. THE SEWER METERING STATION BELOW GRADE IS CLASSIFIED AS CLASS 1, DIVISION 1. ALL EQUIPMENT, DEVICES AND WIRING TO BE INSTALLED SHALL BE APPROVED FOR THE CLASS OF LOCATION AND THE PROPERTIES OF THE GASES PRESENT.
5. ALL CONDUITS ORIGINATING FROM THE SEWER VAULT SHALL BE PROVIDED WITH APPROVED SEALING FITTINGS AND SEALING COMPOUND. INSTALL SEALING FITTINGS AT ALL LOCATIONS IN ACCORDANCE WITH THE N.E.C.
6. ALL CONDUITS IN SEWER MANHOLE SHALL BE RIGID STEEL, PVC COATED.

JURUPA COMMUNITY SERVICES DISTRICT

SCALE: NONE	WASTEWATER FLOW MONITORING STATION	DRAWING NO. S-11
DATE: SEPTEMBER 2020	ALBERT A. WEBB ASSOCIATES CONSULTING ENGINEERS	SHEET 2 OF 6
REV. APPROVED BY:  Sinnaro Yos, P.E. C68607	RIVERSIDE CALIFORNIA	W.O. 19-0248



CABINET NOTES:

1. CABINET SHALL BE FROM HOFFMAN ENCLOSURES, INC MODEL NO. A24H2008SS6LP3PT WITH ASSOCIATED MOUNTING PANEL NO. A24P20SS6 OR APPROVED EQUAL.
2. MASTER LOCK PADLOCK SHOULD BE KEYED TO KEY NUMBER 3882 AND TWO KEYS PROVIDED, ONE FOR OWNER, ONE FOR DISTRICT.
3. CABINET SHALL BE VENTED AND FILTERED (STAINLESS STEEL MESH – WASHABLE) IN THE TOP LEFT AND BOTTOM RIGHT CORNERS. LOUVER PLATE KIT AVK34556, FILTER MEDIA AFT34, AXIAL FAN A4AXFNPG POWER CORD ACORD1, AND FAN FILTER AFLTR4LD MOUNTED TOP LEFT.
4. PANEL SHALL INCLUDE AN ISOLATED 120V 20 AMPS CIRCUIT FOR THE ELECTRICAL OUTLET.

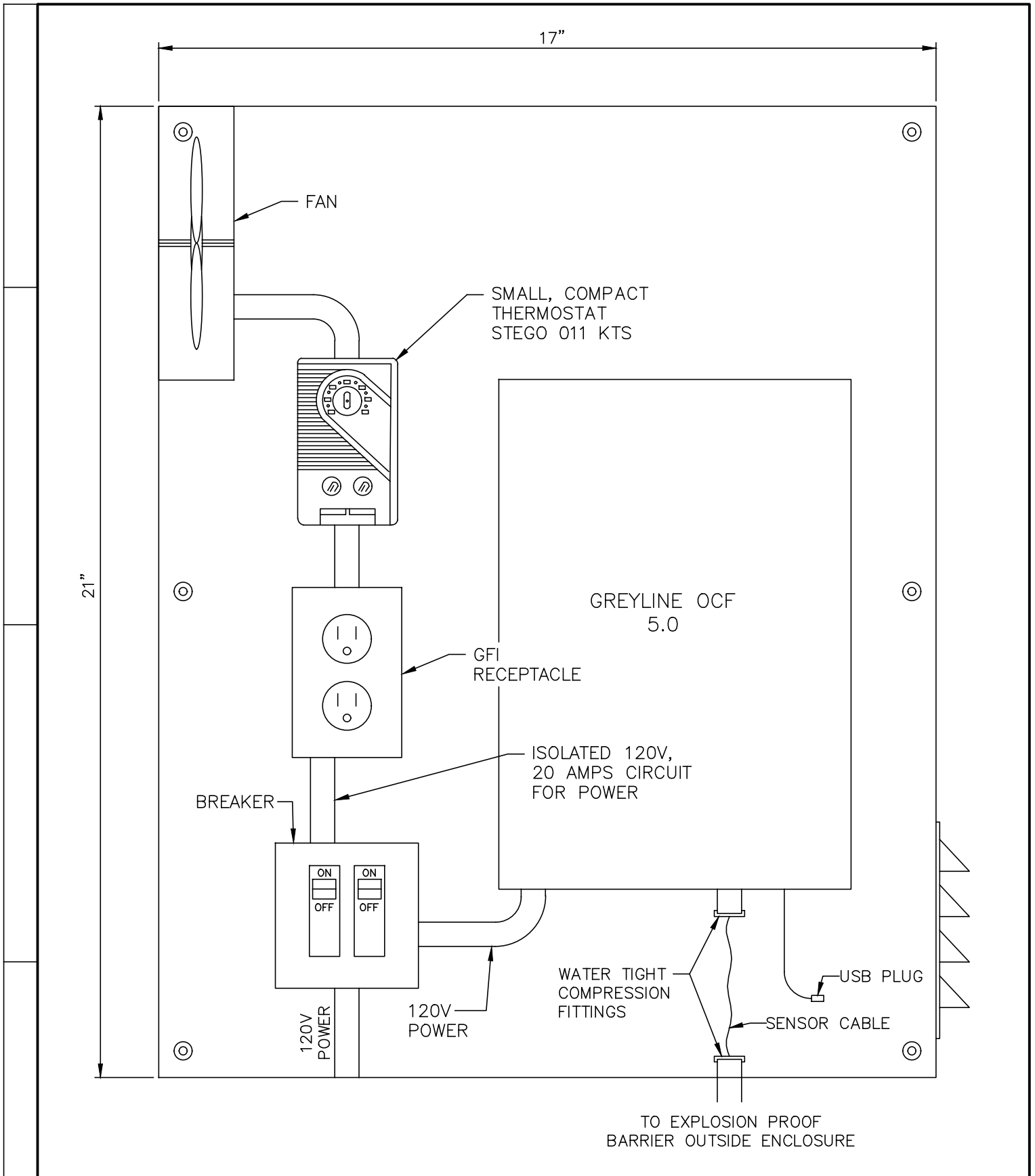
LOCATION NOTES:

1. THE BOTTOM OF PANEL SHOULD BE MOUNTED THREE FEET OFF THE GROUND ON THE OPPOSITE SIDE OF THE MONITORING MANHOLE FROM THE STREET (EIGHT FEET FROM CENTER OF MANHOLE, WHERE PRACTICAL) OR IF NECESSARY, ON THE OUTSIDE WALL OF THE BUILDING NEAREST THE FLOW METER.
2. THE PANEL SHALL BE FREE FROM LANDSCAPING (FOUR FEET IN FRONT OF AND TWO FEET ON EACH SIDE OF THE PANEL ON CONCRETE PAD).
3. ACCESS TO THE PANEL SHALL BE UNOBSTRUCTED AND HAVE A LEVEL WALKING PATH.

JURUPA COMMUNITY SERVICES DISTRICT

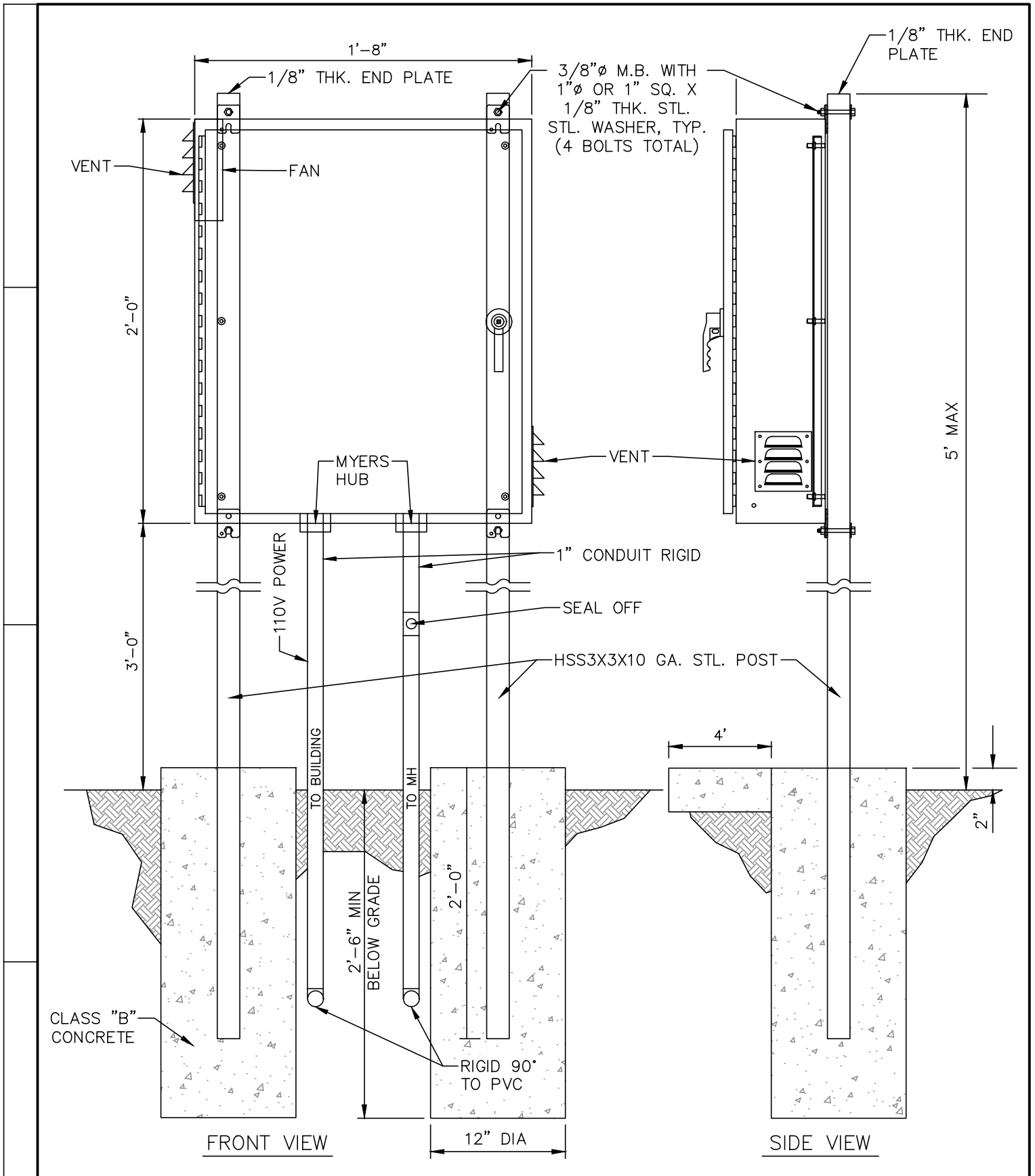
SCALE: NONE	EQUIPMENT ENCLOSURE	DRAWING NO. S-11
DATE: SEPTEMBER 2020	ALBERT A. WEBB ASSOCIATES CONSULTING ENGINEERS	SHEET 3 OF 6
APPROVED BY: Sinnaro Yos, P.E. C68607	RIVERSIDE CALIFORNIA	W.O. 19-0248

REV.



JURUPA COMMUNITY SERVICES DISTRICT

REV.	SCALE: NONE	SEWER FLOW METER PANEL MOUNT	DRAWING NO.
	DATE: SEPTEMBER 2020		S-11
	APPROVED BY: <i>Sinnaro Yos</i>	ALBERT A. WEBB ASSOCIATES CONSULTING ENGINEERS	SHEET 4 OF 6
	Sinnaro Yos, P.E. C68607	RIVERSIDE CALIFORNIA	W.O. 19-0248



JURUPA COMMUNITY SERVICES DISTRICT

SCALE: NONE

DATE: SEPTEMBER 2020

APPROVED BY:

Sinnaro Yos

Sinnaro Yos, P.E. C68607

EQUIPMENT ENCLOSURE MOUNTING POSTS

ALBERT A. WEBB ASSOCIATES
CONSULTING ENGINEERS

RIVERSIDE

CALIFORNIA

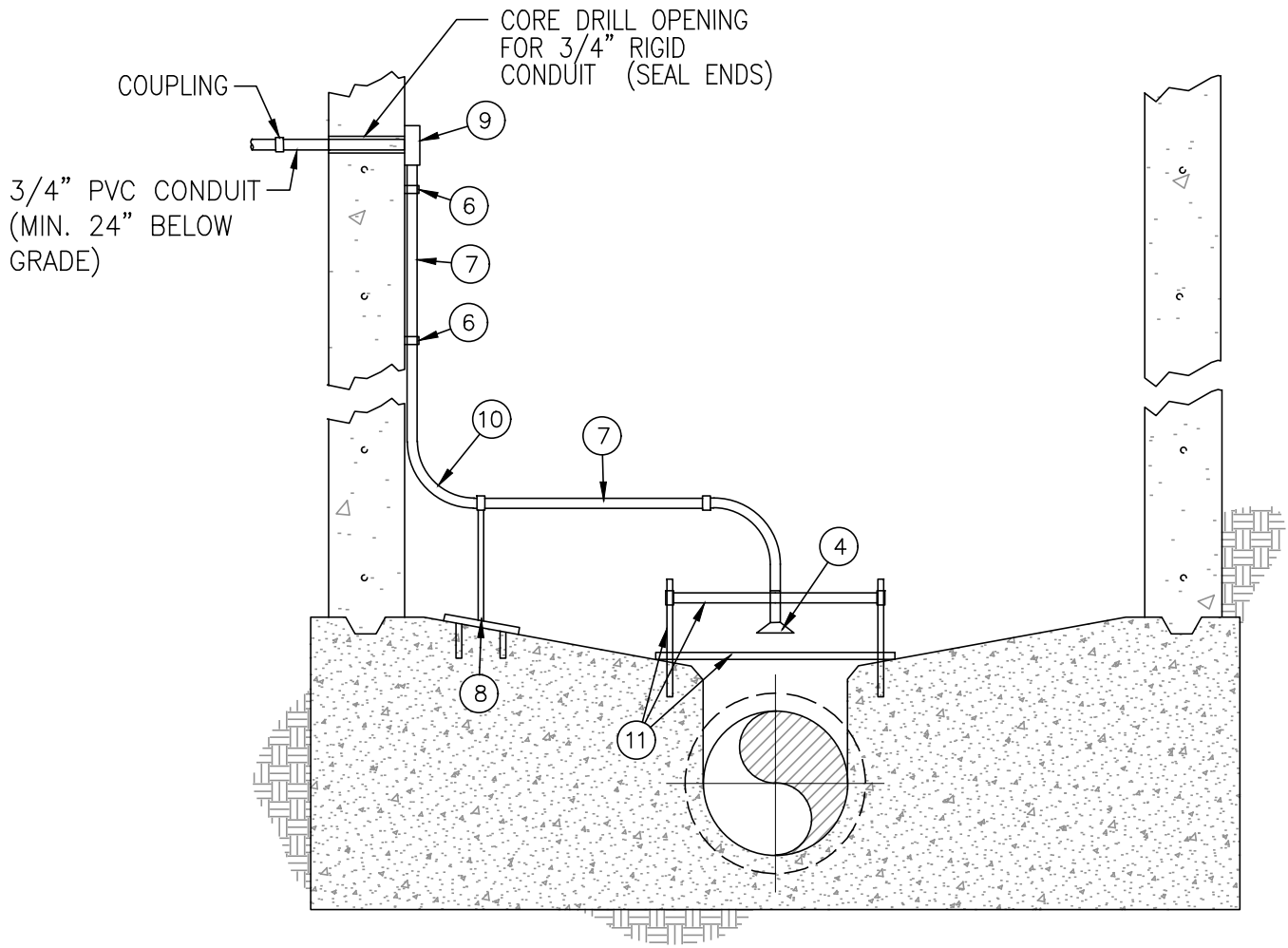
DRAWING NO.

S-11

SHEET 5 OF 6

W.O. 19-0248

REV.



SECTION B-B
N.T.S.

CONSTRUCTION NOTES:

- (4) FLOW TRANSCEIVER IN AN E.P. NON-CORROSION ENCLOSURE COMPLETE WITH A NON-CONTACT SENSOR WITH HOUSING EQUIPPED WITH CABLE TO THE TRANSCEIVER AND 500' (MAX) CABLE FROM THE TRANSCEIVER TO THE FLOWMETER PANEL. THIS SET SHALL BE APPROVED FOR CLASS 1, DIVISION 1 LOCATION.
- (6) SECURE TRANSDUCER CABLE CONDUIT (RIGID STEEL PVC COATED) TO WALL OF MANHOLE WITH T316 STAINLESS STEEL STRAPS 48"± O.C.
- (7) 3/4" DIA. RIGID STEEL PVC COATED CONDUIT WITH PVC COATED COUPLINGS AS REQUIRED.
- (8) STAINLESS STEEL (316) CONDUIT SUPPORTS AS REQUIRED.
- (9) EXPLOSION PROOF JUNCTION BOX WITH SEALING COVER PVC COATED.
- (10) RIGID STEEL PVC COATED SWEEP WITH PVC COATED COUPLINGS AS REQUIRED.
- (11) STAINLESS STEEL (T316) FLOOR MOUNTING BRACKET SECURED TO FLOOR WITH T316 STAINLESS STEEL BOLTS. BRACKETS SHALL BE UNISTRUT CHANNELS AND FITTINGS, TYPICAL PARTS AS FOLLOWS:
 - A. STRUT CHANNEL WALL MOUNT 316 STAINLESS STEEL, 2- FEET LENGTH, NO. 3188T54
 - B. STRUT CHANNEL CONNECTOR ELBOW, 304 STAINLESS STEEL, 5-3/8" LENGTH, NO. 33125T83
 - C. STRUT CHANNEL, SOLID, 316 STAINLESS STEEL, NO. 33085T89
 - D. VIBRATION-DAMPING STRUT-MOUNT ROUTING CLAMP WITHOUT CUSHION, 316 STAINLESS STEEL SCREW AND NUT, 3/4" I.D., NO. 1819T35

JURUPA COMMUNITY SERVICES DISTRICT

SCALE: NONE	SECTION B-B	DRAWING NO.
DATE: SEPTEMBER 2020	ALBERT A. WEBB ASSOCIATES CONSULTING ENGINEERS	S-11
APPROVED BY: Sinnaro Yos, P.E. C68607	RIVERSIDE CALIFORNIA	SHEET 6 OF 6 W.O. 19-0248