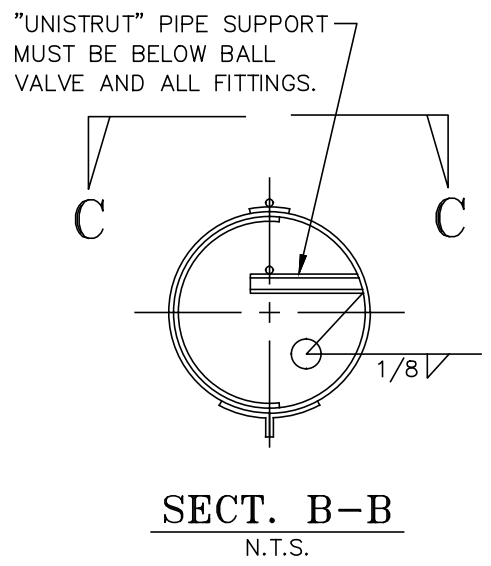
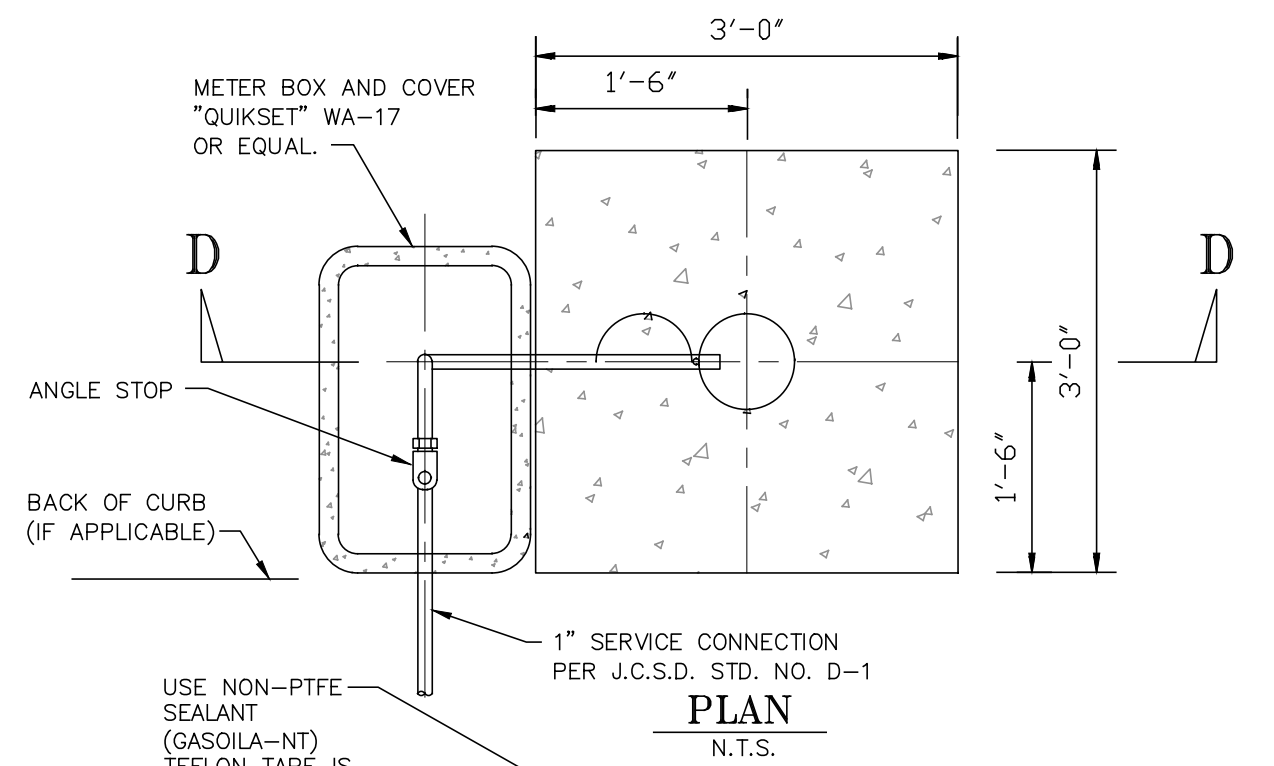


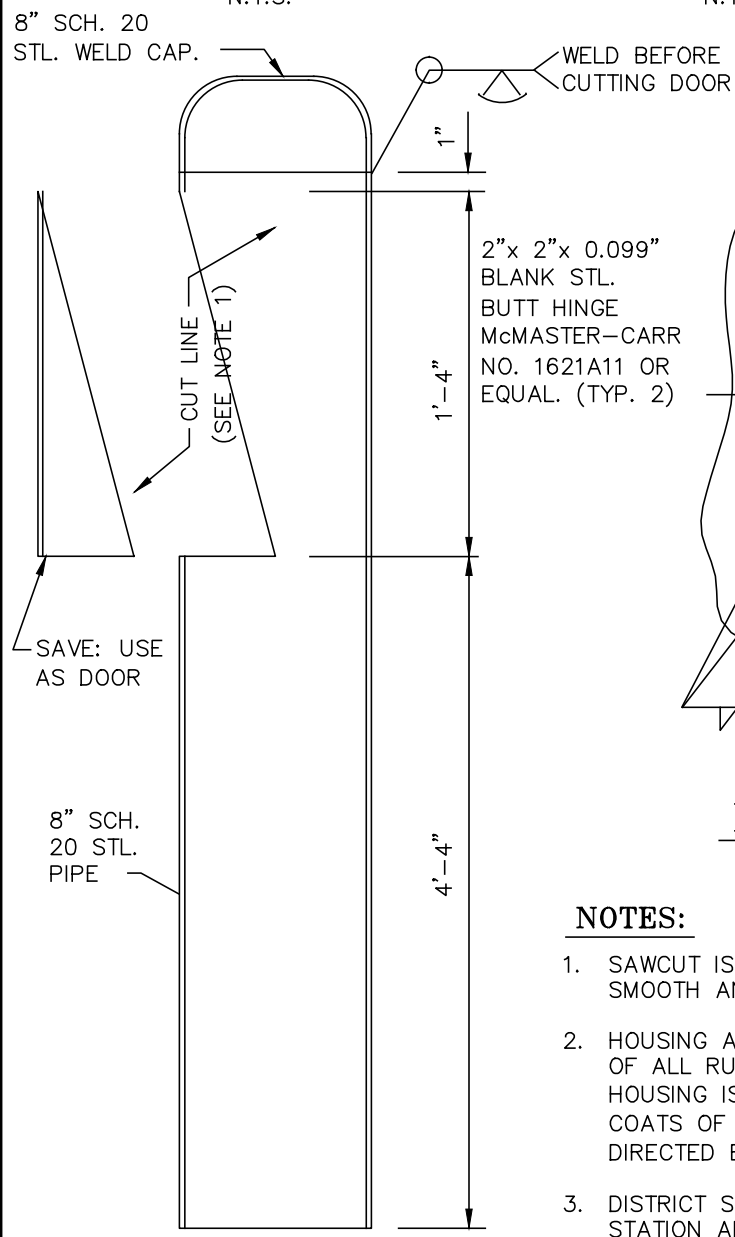
**SECT. A-A**  
N.T.S.



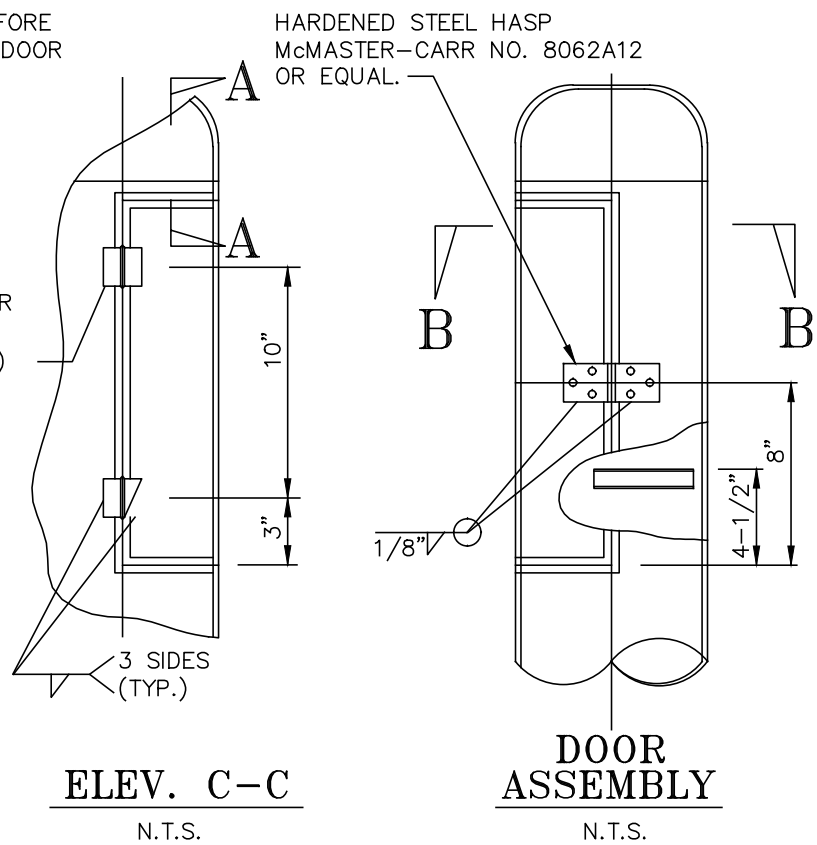
**SECT. B-B**  
N.T.S.



**PLAN**  
N.T.S.



**HOUSING LAYOUT**  
N.T.S.

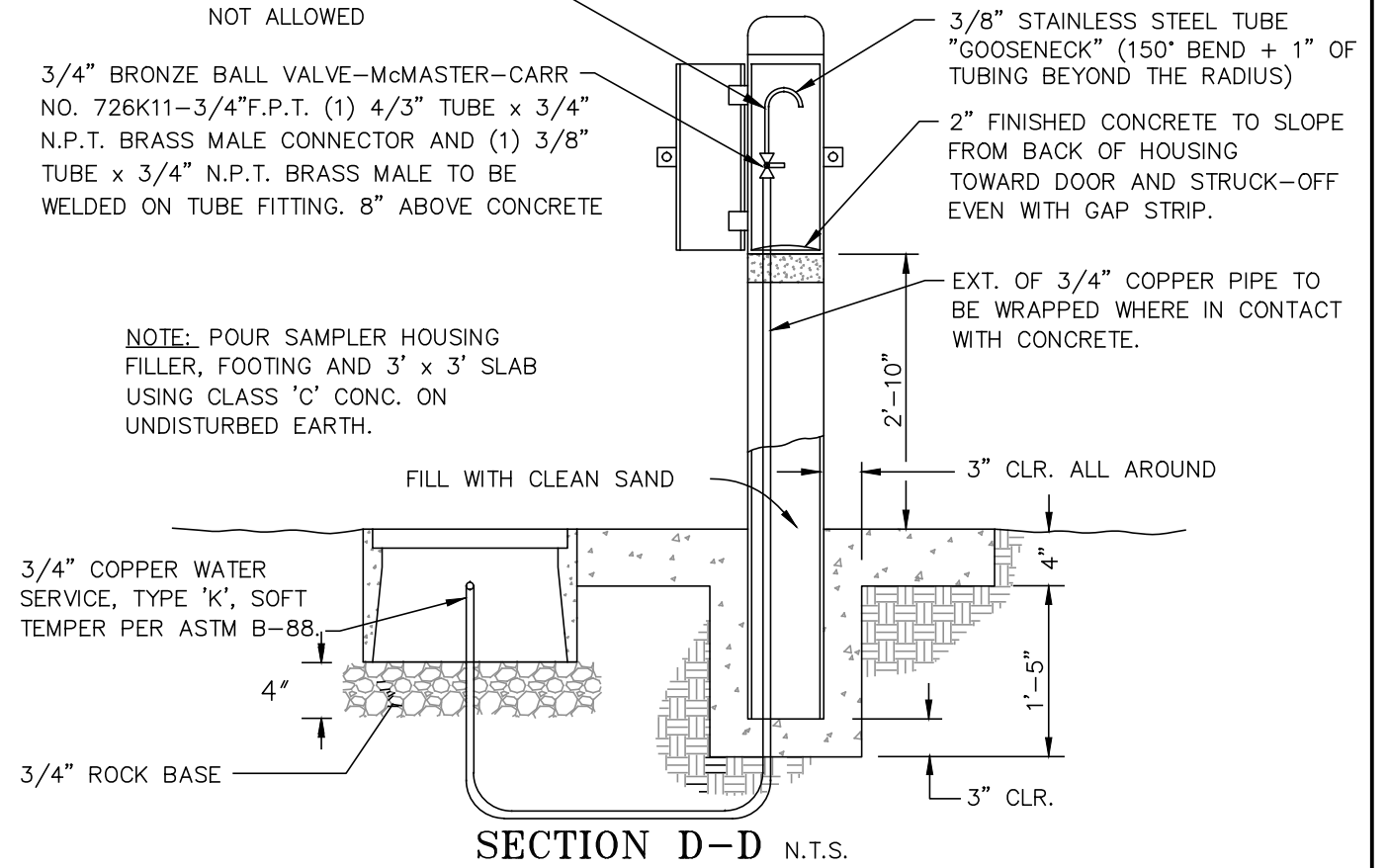


**ELEV. C-C**  
N.T.S.

**DOOR ASSEMBLY**  
N.T.S.

- NOTES:**
1. SAWCUT IS PREFERRED FOR DOOR OPENING, GRIND CUT SMOOTH AND BREAK ALL SHARP EDGES.
  2. HOUSING ASSEMBLY TO BE SANDBLASTED CLEAR AND FREE OF ALL RUST, SCALE AND WELD SPATTER ON ALL SURFACES. HOUSING IS THEN TO BE PAINTED WITH PRIMER AND TWO (2) COATS OF XOP25 LIGHT BLUE PAINT, (COLOR TO BE AS DIRECTED BY DISTRICT.)
  3. DISTRICT SHALL DETERMINE EXACT LOCATION OF SAMPLING STATION AND GUARD POSTS WHERE REQUIRED.

**FABRICATION DETAILS**  
N.T.S.



**SECTION D-D** N.T.S.

**JURUPA COMMUNITY SERVICES DISTRICT**

SCALE:	<b>WATER SAMPLING STATION CONSTRUCTION DETAILS</b>	DRAWING NO.
DATE: SEPTEMBER 2020		<b>K-1</b>
APPROVED BY: <i>Albert A. Webb</i> Sinnaro Yos, P.E. C68607	ALBERT A. WEBB ASSOCIATES CONSULTING ENGINEERS RIVERSIDE CALIFORNIA	W.O. 19-0248