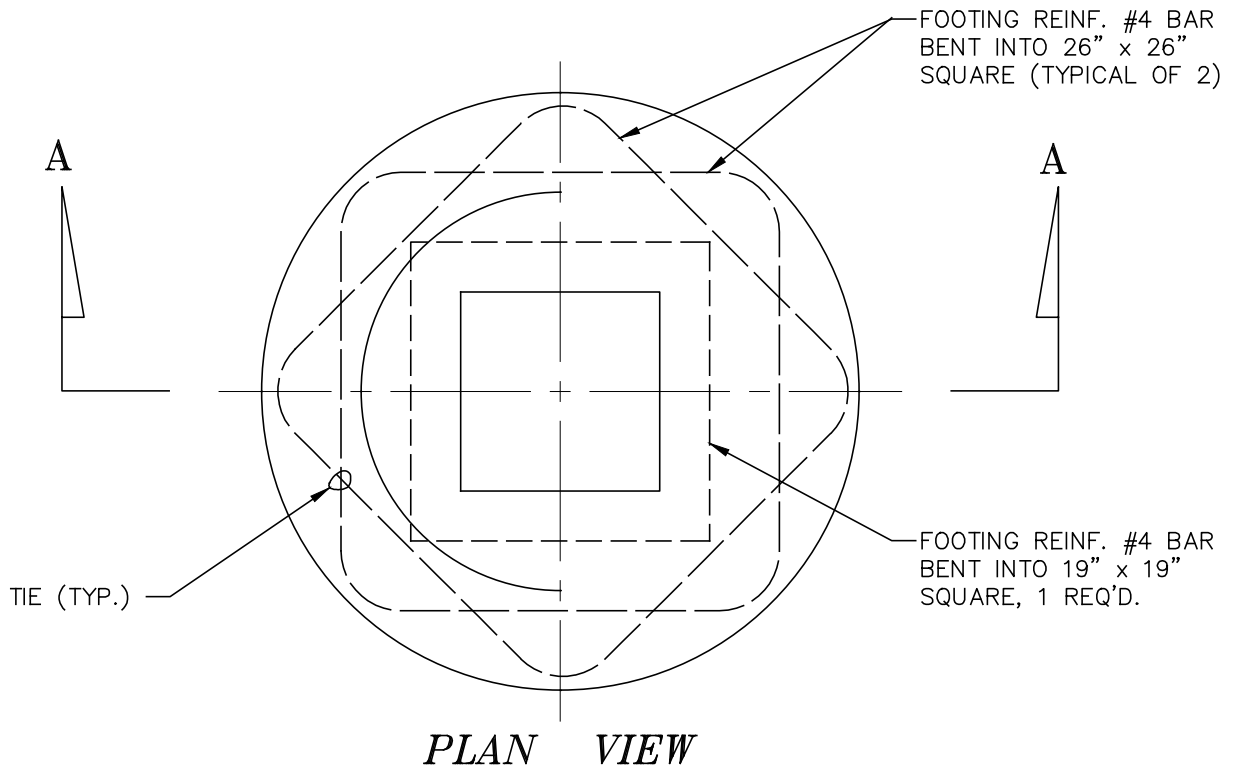
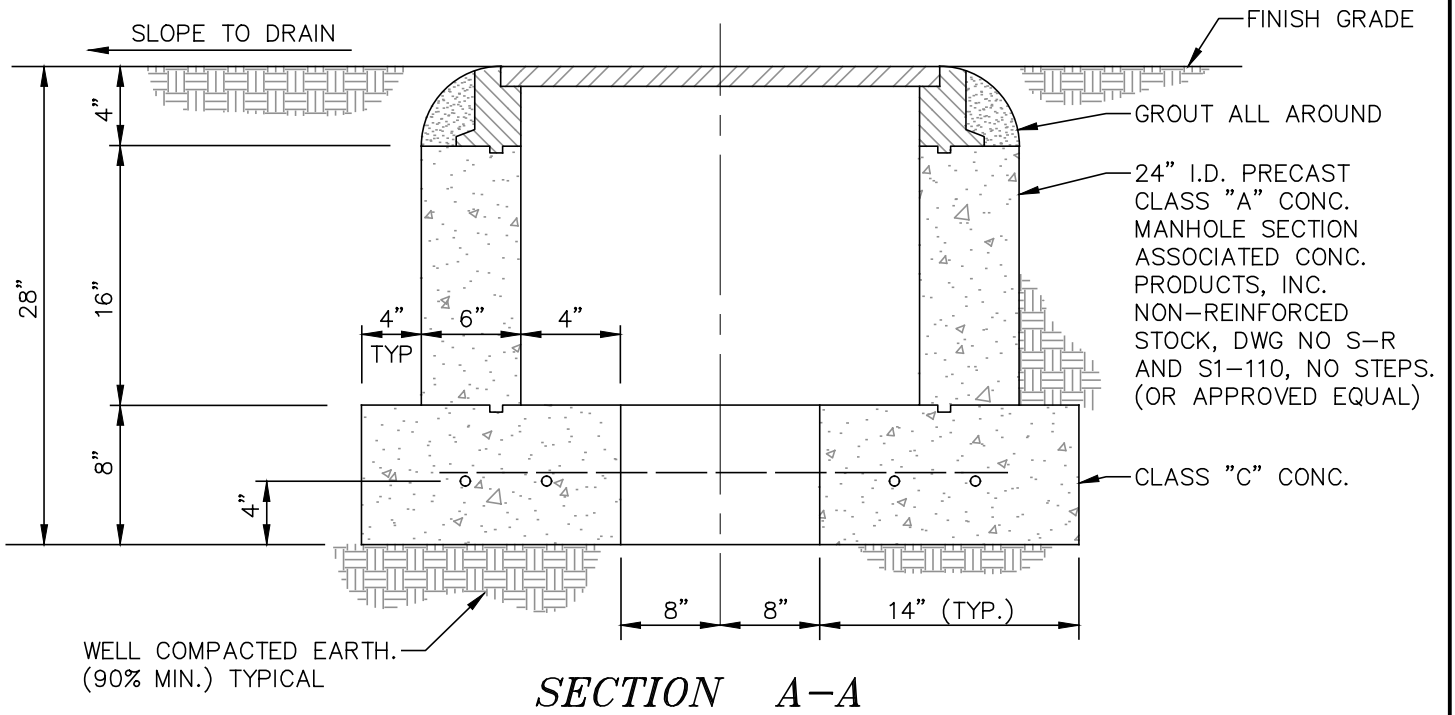


ALHAMBRA FOUNDARY TRAFFIC MANHOLE FRAME AND COVER NO. A-1254 OR APPROVED EQUAL, WITH LETTERS J.C.S.D., W/TOP OF COVER AND FRAME PAINTED WITH PRIMER AND TWO (2) COATS OF PAINT PER DISTRICT SPECIFICATIONS. REFER TO STD NO S-7 FOR FRAME & COVER SETTING CONDITIONS.



# JURUPA COMMUNITY SERVICES DISTRICT

SCALE: NONE

DATE: SEPTEMBER 2020

APPROVED BY:

*Sinnaro Yos*

Sinnaro Yos, P.E. C68607

## TYPICAL BLOW OFF MANHOLE DETAIL

ALBERT A. WEBB ASSOCIATES  
CONSULTING ENGINEERS

RIVERSIDE

CALIFORNIA

DRAWING NO.

**I-3**

W.O. 19-0248

REV.