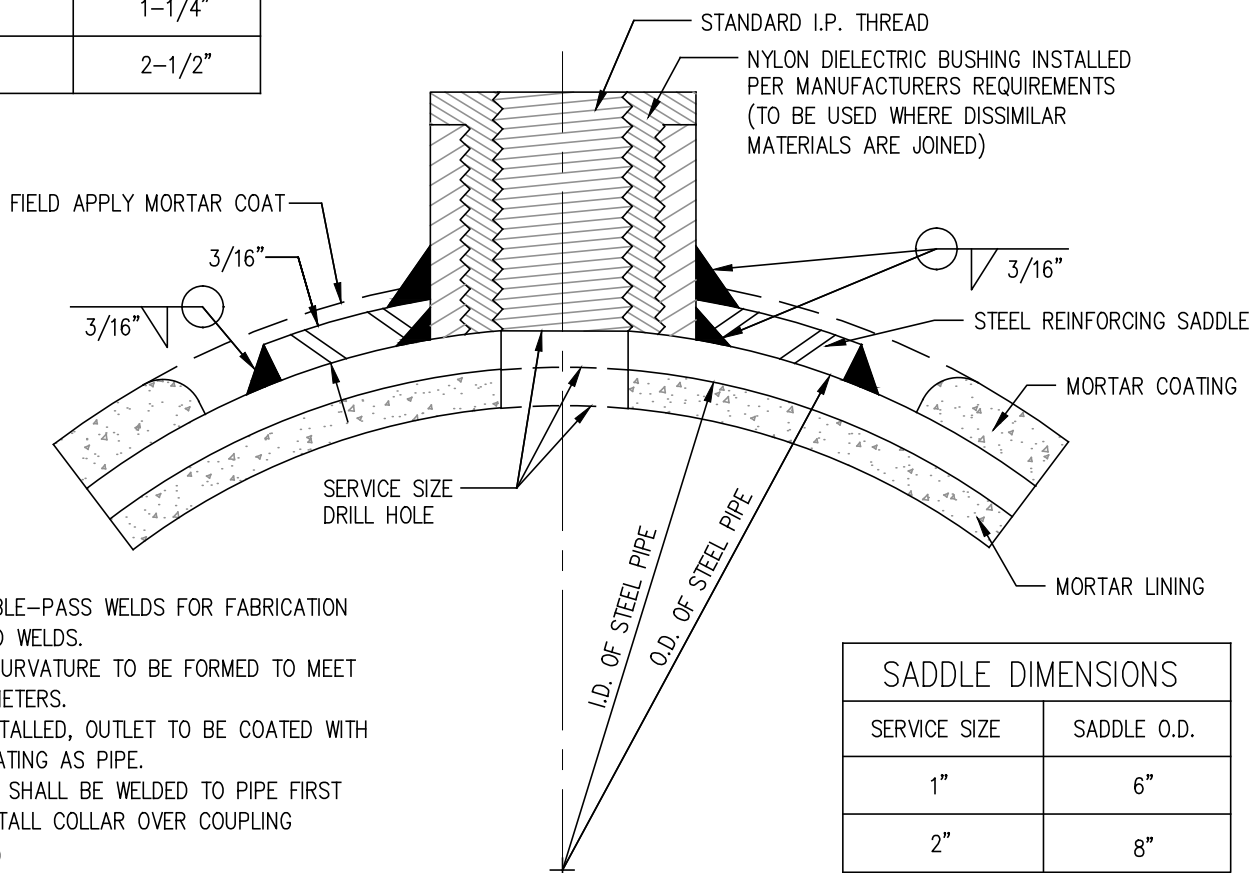


3000# FORGED STEEL
HALF COUPLING

O.D. OF STEEL REINFORCING SADDLE

TYPICAL COUPLING SIZES
FOR DIALECTRIC BUSHING

SERVICE SIZE (FEMALE THREAD)	COUPLING SIZE (MALE THREAD)
1"	1-1/4"
2"	2-1/2"



NOTES:

- USE DOUBLE-PASS WELDS FOR FABRICATION AND FIELD WELDS.
- SADDLE CURVATURE TO BE FORMED TO MEET PIPE DIAMETERS.
- WHEN INSTALLED, OUTLET TO BE COATED WITH SAME COATING AS PIPE.
- COUPLING SHALL BE WELDED TO PIPE FIRST THAN INSTALL COLLAR OVER COUPLING (2-PIECE)
- PLASTIC PIPE DIELECTRIC D6A
- PERFORM CONTINUITY TEST.

SADDLE DIMENSIONS

SERVICE SIZE	SADDLE O.D.
1"	6"
2"	8"

SECTION A-A

JURUPA COMMUNITY SERVICES DISTRICT

SCALE: NONE

DATE: SEPTEMBER 2020

APPROVED BY:

Sinnaro Yos

Sinnaro Yos, P.E. C68607

SERVICE OUTLET SADDLE

ALBERT A. WEBB ASSOCIATES
CONSULTING ENGINEERS

RIVERSIDE

CALIFORNIA

DRAWING NO.

D-6

W.O. 19-0248

REV.