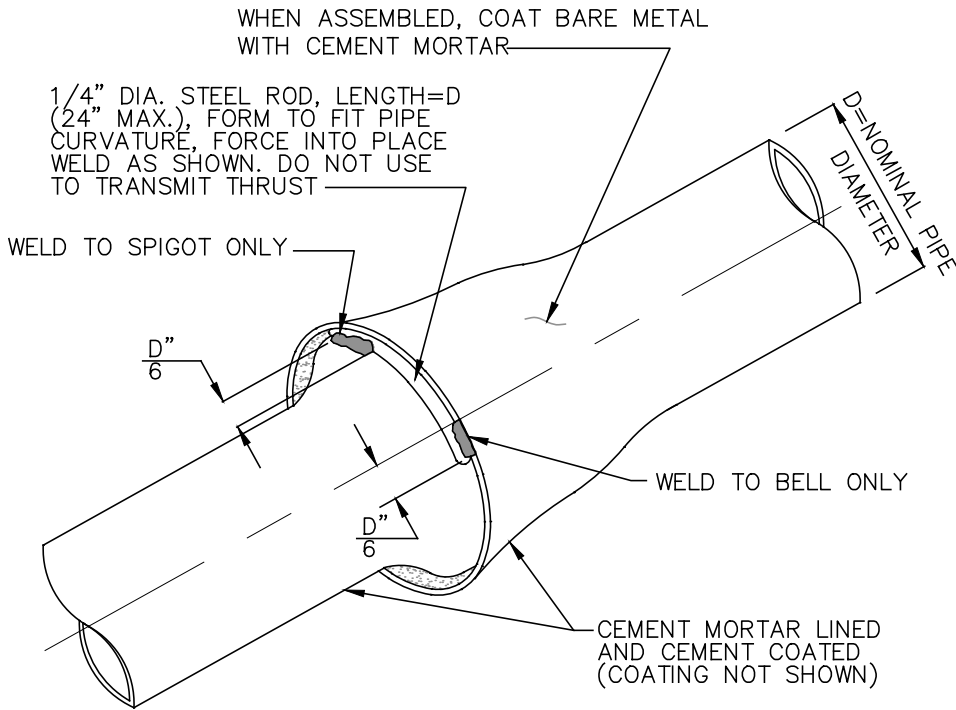
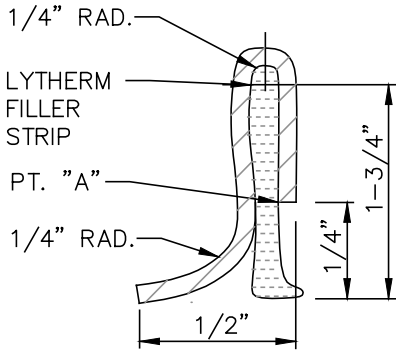
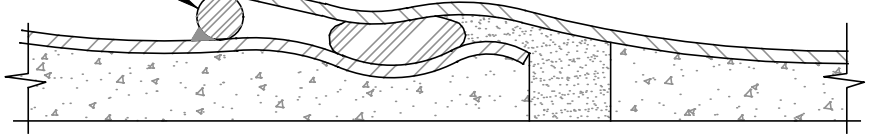


NOTE:
DISTRICT DIRECTED
USE ONLY



1/4" DIA. STEEL ROD.
 WELD AS SHOWN ABOVE



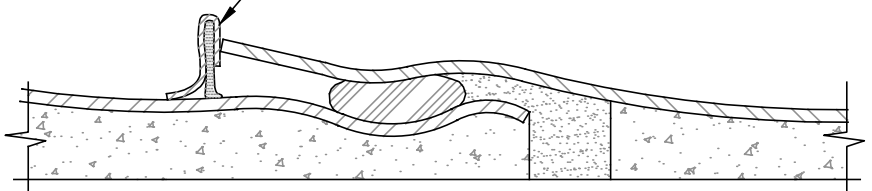
BONDING CLIP DETAIL

MATERIAL PER ASTM A366, COMMERCIAL QUALITY; 10 GA.x2 1/2" LGx1 1/4" WD. LYTHERM STRIP TO BE 1"± LONG x 1 1/2" WIDE; TO OVERLAP SIDES OF CLIP. CRIMP CLIP @ POINT "A" TO COMPRESS FILLER.

BOND DETAIL

COATING NOT SHOWN

2 BONDING CLIPS (MIN) REQUIRED PER JOINT OR AS RECOMMENDED BY MANUFACTURER.



ALTERNATE BOND DETAIL

COATING NOT SHOWN

NOTES:

1. OMIT WHERE WELDED PIPE JOINT REQUIRED, OR RING SEAL JOINT IS WELDED FOR THRUST.
2. FORCE 1/4" DIA. ROD INTO PLACE. AT ONE END, WELD TO BELL, AT OTHER, WELD TO SPIGOT. REQUIRED LENGTH OF WELD EACH END = D/6 (1" MIN., 4" MAX.)
3. WELD AS SHOWN, DO NOT WELD EITHER END TO BOTH BELL AND SPIGOT OF PIPE.

JURUPA COMMUNITY SERVICES DISTRICT

SCALE: NONE

DATE: SEPTEMBER 2020

APPROVED BY:

Sinnaro Yos
 Sinnaro Yos, P.E. C68607

**FORMED BELL AND SPIGOT JOINT
 BONDING DETAIL**

ALBERT A. WEBB ASSOCIATES
 CONSULTING ENGINEERS

RIVERSIDE

DRAWING NO.

C-7

CALIFORNIA

W.O. 19-0248

REV.