

MIN. WRAPPER / COLLAR REINFORCEMENT THICKNESS

D = I.D. OF MAIN PIPE CYLINDER
d = I.D. OF BRANCH PIPE CYLINDER
 Δ = DEFLECTION ANGLE

NOM. DIA. RANGE

"t"

4" THRU 18"

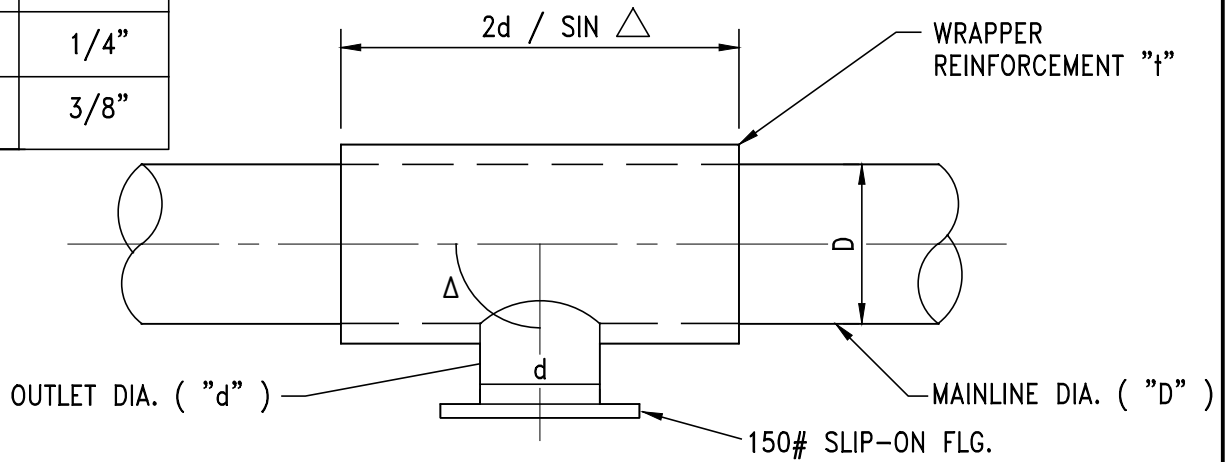
3/16"

20" THRU 27"

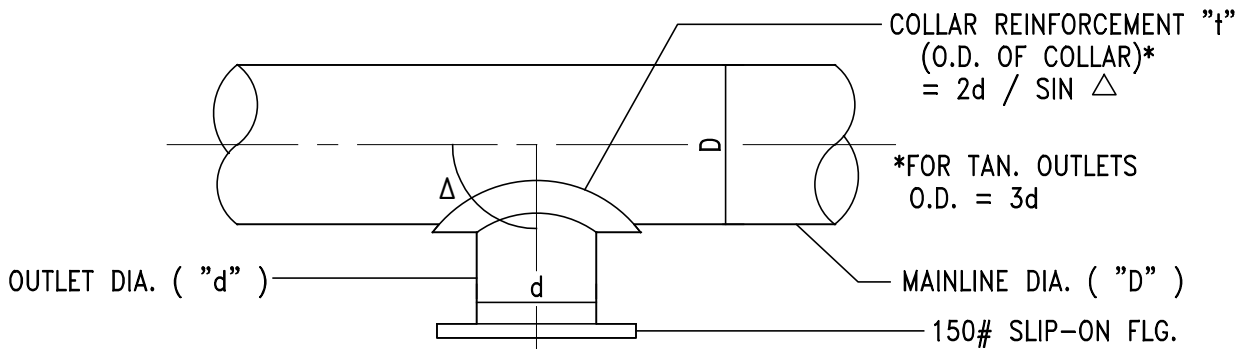
1/4"

30" THRU 36"

3/8"



TYPICAL WRAPPER REINFORCEMENT



ALL FITTINGS, OUTLETS, ETC. SHALL BE CML/CMC W.S.P.

TYPICAL COLLAR REINFORCEMENT

D	$d/D \sin \Delta = X$	REINFORCEMENT
LESS THAN 24"	$X \leq 0.6$	COLLAR
	$0.6 < X \leq 1.0$	WRAPPER
	$1.0 < X$	CROTCH PLATE
24" THRU 36"	$X \leq 0.6$	COLLAR
	$0.6 < X \leq 0.75$	WRAPPER
	$0.75 < X$	CROTCH PLATE

NOTES:

1. OUTLETS ARE DESIGNED FOR MAXIMUM PRESSURE CLASS OF 200 P.S.I.
2. ALL OUTLETS REQUIRING CROTCH PLATES, SHALL BE SUBMITTED TO AGENCY FOR APPROVAL.
3. USE A DISTRICT APPROVED TAPPING SLEEVE FOR CONNECTIONS TO PVC PIPE.
4. DISTRICT WILL DETERMINE THE TYPE OF TEE CONSTRUCTION DEPENDING ON THE EXISTING PIPE MATERIAL AND CONDITIONS AS WELL AS THE PROPOSED VALVE INSTALLATION.

JURUPA COMMUNITY SERVICES DISTRICT

SCALE: NONE

DATE: SEPTEMBER 2020

APPROVED BY:

Sinnaro Yos
Sinnaro Yos, P.E. C68607

OUTLET REINFORCEMENT DETAILS

ALBERT A. WEBB ASSOCIATES
CONSULTING ENGINEERS

RIVERSIDE

CALIFORNIA

DRAWING NO.

C-6

W.O. 19-0248

REV.