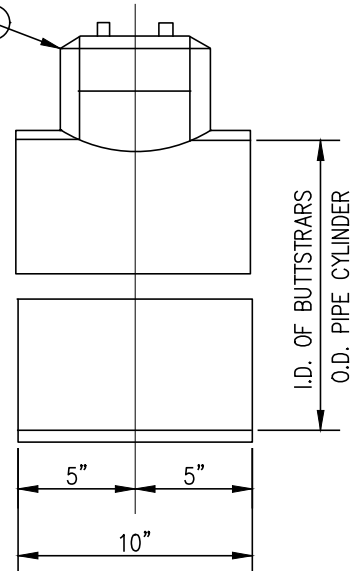


WELDED PRE-CEMENTED CAP
UPON OWNER/INSPECTOR
APPROVAL OF CONNECTION

1/4"



SIDE VIEW

NOTES:

- ① 1 HANDHOLE REQUIRED FOR 4"Ø PIPE THROUGH 14"Ø PIPE.
- ② 2 HANDHOLES REQUIRED FOR 20"Ø PIPE THROUGH 30"Ø PIPE.
- ③ UP TO CLASS 200 PIPELINES:
 "T" = 1/4" FOR 4" DIA. THROUGH 30" DIA.
 "T" = 5/16" FOR 36" DIA.
 5" - BLACK, HALF-COUPLING, STD. WT.
 5" - BLACK, CORED, BAR PLUG, STD. WT.
- ④ GREATER THAN CLASS 200 THROUGH CLASS 350 PIPELINES:
 "T" = 1/4" FOR 4" DIA. THROUGH 20" DIA.
 "T" = 5/16" FOR 24" DIA.
 "T" = 3/8" FOR 30" DIA. & 36" DIA.
 5" - BLACK, HALF-COUPLING, EXTRA HEAVY
 5" - BLACK, SOLID, BAR PLUG, EXTRA HEAVY
- ⑤ 4 HANDHOLES REQUIRED FOR PIPE SIZES GREATER THAN 30" DIA.
- ⑥ 4 HANDHOLES REQUIRED FOR PIPE SIZES GREATER
- ⑦ WEDDING BAND NOT ALLOWED

JURUPA COMMUNITY SERVICES DISTRICT

SCALE: NONE		TYPICAL BUTT STRAP CONNECTION CML/CMC PIPE	DRAWING NO.
DATE: SEPTEMBER 2020			C-3
REV.	APPROVED BY: 	ALBERT A. WEBB ASSOCIATES CONSULTING ENGINEERS	
	Sinnaro Yos, P.E. C68607	RIVERSIDE CALIFORNIA	W.O. 19-0248