



SECTION TWO

2.0 EXISTING RECREATION RESOURCES

Section Two provides an inventory and classification of existing parks, recreation facilities and opportunity sites in and around JCSD Parks territory.

Section Two Highlights:

- › The JCSD Parks territory has added 12 parks since the 1998 Master Plan.
- › This Master Plan identifies two major park facility classification types: community park, and neighborhood park.
- › The JCSD Parks territory includes 160 acres of parkland with an additional 74 acres planned for development.
- › The JCSD has a joint-use agreement with the Corona-Norco Unified School District, which allows the JCSD to utilize Corona-Norco Unified School District facilities during non-school hours.
- › Opportunity sites including planned and unplanned JCSD properties and acquisition sites are identified as potential locations for new parks and recreation facilities.

2.1 PARK DEFINITION

For purposes of this Master Plan report, a multipurpose definition of “park” is desirable that relates to the needs analysis tools used in Section Three:

Public Park or Park Land: An outdoor area owned by a public entity generally available for public passive and/or active recreation usage and containing access or recreation improvements.

Areas not generally considered as “parkland” include: street medians and parkways; natural preserved or conserved open space areas without access; unimproved land zoned for uses other than recreation. This Master Plan report will use the term “park” and “recreation facility” interchangeably, the terms refers to the park types described in Section 2.3.

2.2 NEW PARKS AND RECREATION FACILITIES SINCE 1998 MASTER PLAN

Since 1998, when the previous Parks Plan was updated, the JCSD Parks and Recreation Department has aggressively pursued and/or facilitated design and implementation of a significant number of recreation facility projects. Essentially all of the existing parks within the JCSD Parks territory have been developed since the last Parks Plan update. Parks include:

- › American Heroes Park
- › Cedar Creek Park
- › Dairyland Park
- › Deer Creek Park
- › Half Moon Park
- › Harada Heritage Park
- › James C. Huber Park
- › McCune Family Park
- › Mountain View Park
- › Orchard Park
- › Providence Ranch Park
- › Riverwalk Park

These facilities represent an addition of one hundred sixty (160) gross acres to the park system. Other facilities under development include the Eastvale Community Center, which is under construction, and Eastvale Community Park, which will add an additional 74 acres of parkland to the JCSD Parks territory.



Dairyland Park



Harada Park



Half Moon Park



Providence Ranch Park



Cedar Creek Park



Riverwalk Park

2.3 JCSD PARK TYPES

Parks can be classified by type based primarily on their size, function and character. The categorization of parks is important in understanding the JCSD Parks territory acreage needs and for communicating the type of parks that are needed in the future. Since the writing of the 1998 Master Plan Update, the JCSD Parks and Recreation Department developed its park system, adding all twelve (12) existing park facilities. While the definitions used in the previous Master Plan are useful as a referential starting point, modifications to the original descriptions are necessary to accommodate the newly developed park system. Parks in the JCSD Parks territory are distinct in that many are located in residential neighborhoods, but also provide amenities to the larger community, such as organized sports league fields.

Community Parks: Community parks are approximately 15 acres or larger in size and have a service radius that encompass the entire community. Community parks offer amenities that might be utilized by members of the entire community, rather than only those that live in the nearby vicinity. Community parks typically include active recreational amenities with lighted sports fields for organized league games, or natural open space features, not typically found in neighborhood parks. Typical destination amenities may include picnic facilities, dog parks, lighted baseball, softball, soccer, or other sports fields, basketball courts, multi-purpose fields, gathering areas, tennis courts, trails, and equestrian areas.

Community parks could be further broken down into two sub-categories:

Community Sports Park: These are parks, which are large in size and have intensive active usage, with lighted fields used by the community for organized sports league games.

- › The JCSD has one (1) community sports park: *Harada Heritage Park (30.72 acres)*

Community Nature Park: These are parks, which are large in size, but have significant natural open space and trails as the primary community amenity.

- › The JCSD has one (1) community nature park: *Riverwalk Park (22.36 acres)*

American Heroes Park (18.95 acres) functions somewhat as a hybrid. Because of its large size it could function as a community park, but it has very few recreation features to draw community members. Its large parking lot and concessions building provide the potential for active recreation usages, but the power lines and their associated restrictions, limit the use of this area.

Eastvale Community Park will create an additional community park in the JCSD Parks territory; plans and recommendations for the park are discussed in Section Five.

Neighborhood Parks: Neighborhood parks are typically smaller parks (less than 15 acres) and exist within residential neighborhoods. Neighborhood parks are intended to serve JCSD residents who live in close proximity; however they also contribute to the overall park system and are available to the entire community. Ideally, everyone in the JCSD Parks territory would live within convenient walking distance (typically one-half mile) of a neighborhood park. This is defined as the “service radius” or “service area” of a neighborhood park.

Neighborhood Parks should address daily recreation needs of the surrounding neighborhood; features of neighborhood parks might include playgrounds, multi-purpose open turf areas, practice sports fields, picnic tables and/or picnic shelters, walking paths, dog parks, spray play areas, attractive landscaping, and in some cases active recreation features such as basketball courts, baseball and soccer fields. Neighborhood parks within the JCSD Parks territory could be further broken down into *two sub-categories*:

Neighborhood Parks: These are neighborhood parks, which may offer active recreational sports fields, but they are not lighted and are not used by organized sports leagues for game play.

- › The JCSD Parks territory has four (4) neighborhood parks that fit this sub-category: *Cedar Creek Park, Dairyland Park, Half Moon Park, and Mountainview Park*

Neighborhood Sports Parks: The JCSD Parks territory has a number of parks that can be defined as neighborhood parks, but also contain lighted sports fields, which are used by organized sports leagues for games and practice.

- › The JCSD Parks territory has five neighborhood sports parks that fit this sub-category: *Deer Creek Park, James C. Huber Park, McCune Park, Orchard Park, and Providence Ranch Park.*

2.4 EXISTING AND PLANNED RECREATION FACILITIES

Unique and diverse recreational opportunities are available throughout the JCSD Parks territory, including numerous facilities for active and passive recreational activities including dog parks, baseball fields, basketball courts, a disc golf course, picnic areas, trails, softball fields, skateparks, soccer fields, spray play areas, and tennis courts. The JCSD Parks territory has developed over the past decade, creating new facilities associated with newly formed residential developments.

Exhibit 2.4-1 is a map showing the location of each existing and planned parks and recreation facilities*; Exhibit 2.4-2 is a matrix that describes size and features of existing public parks and recreation facilities within the JCSD Parks territory.

It is worthwhile noting items of special interest:

- › The majority of residents (59%) say they are “very satisfied” with parks in the JCSD Parks territory; (38%) say they are “somewhat satisfied.”
- › Harada Park is the most used park in the JCSD as reported by the highest number of households (28%) polled in a JCSD Parks territory-specific telephone survey.
- › The majority of residents (60%) are frequent users of recreation facilities (at least once a week).
- › Only one (1) park, Riverwalk Park, has trails or trail connections to open space area.
- › The vast majority of residents (96%) describe the maintenance of parks as “good” or better (60% describe the maintenance of parks as “excellent”).

**While not existing facilities, Eastvale Community Park and Eastvale Community Center are part of the planning efforts made by the JCSD Parks and Recreation Department before the commencement of the Master Plan process and are classified here and throughout the document as “planned” facilities. While these facilities were planned before the Master Plan process, it is important to note that they did not physically exist during the process, and therefore could not be considered as existing facilities as part of the needs assessment of Section Three.*

The Master Plan also makes an important distinction between two phases of development planned for Eastvale Community Park; while both of these phases are “planned,” phase II has not been designed and is considered as an opportunity site for future facilities. The development of both phases will ultimately create a single community park, and both phases are included here for to illustrate this. Section 2.8 describes the opportunity sites and clarifies this distinction.

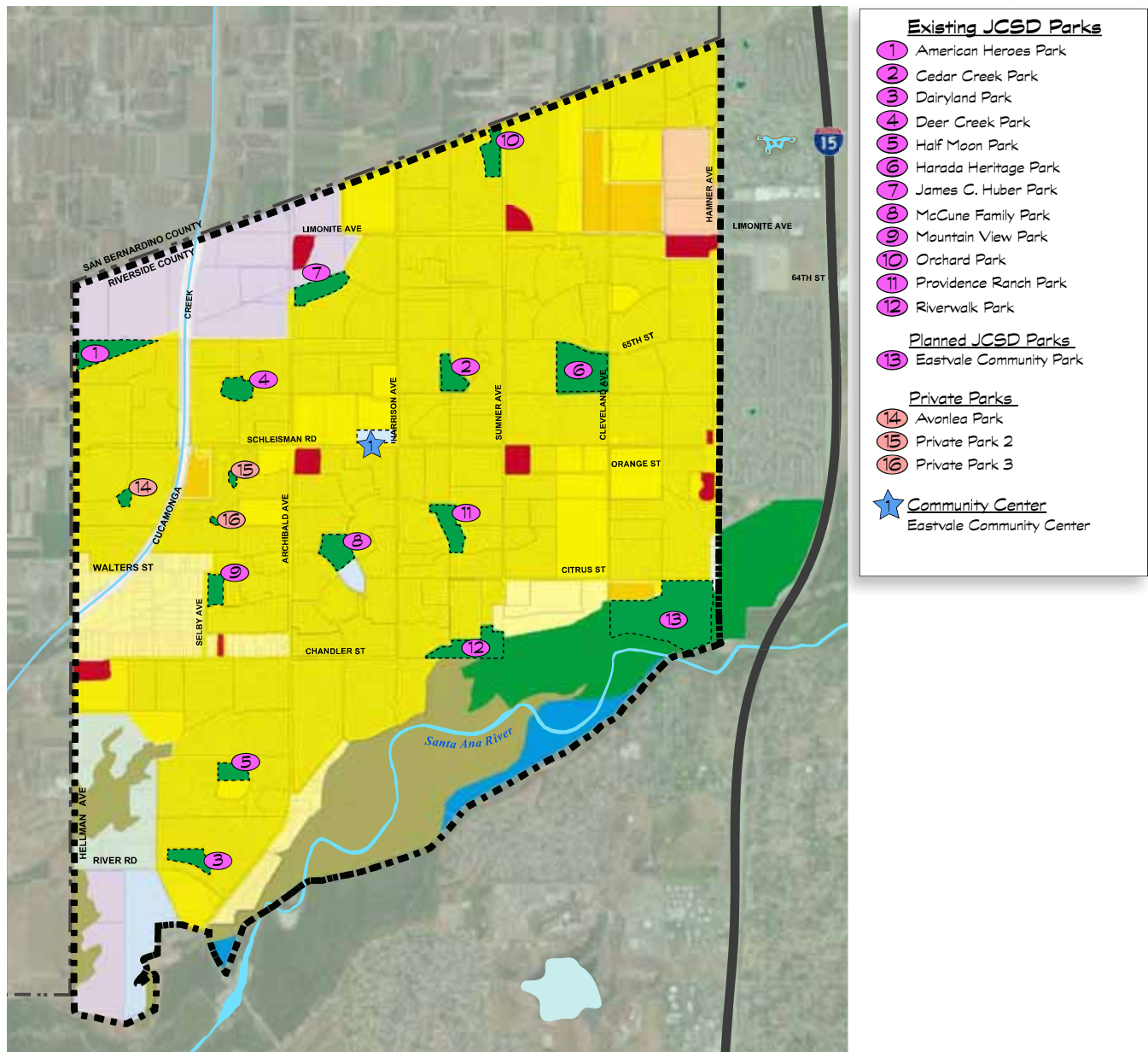


Exhibit 2.4-1 Parks Map

SECTION TWO

JCSD PARK AND RECREATION FACILITIES			Parkland Acreage	Undeveloped	PARK FACILITIES																	SPORTS FACILITIES													
					Amphitheater	Barbeques	Bike Rack	Community Building	Dog Bag Dispenser	Dog Park	Electrical outlets	Equestrian Arena (Corral)	Equestrian Staging Area	Exercise Course	Parking	Playground / Tot Lot	Picnic Shelter / Gazebo	Picnic Tables (includes two benches)	Restroom	Trail / Paseo Linage	Baseball (youth)	Basketball (indoor-in Gymnasium)	Basketball (outdoor)	Concession Building	Football Field	Gymnasium	Frisbee Golf	Multi-Purpose Field	Softball (youth)	Skate Park	Soccer Field	Spray Play	Swimming Pool	Tennis Court	Volleyball
KEY	FACILITY	TYPE	Parks (Existing)																																
1	American Heroes Park	Community/ Neighborhood	18.95			11	1	4	1	2				1	1	2	12	1				2 - (.5 crt) L	1					1			1				
2	Cedar Creek Park	Neighborhood	9.54			4	1	5		2				2	2	2	14	1								1				1					
3	Dairyland Park	Neighborhood	9.22			5		2	1								2	15	1												1				
4	Deer Creek Park	Neighborhood Sports	9.30			5	1	3						1		2	1				1 L P			1							1 L P				
5	Half Moon Park	Neighborhood	5.00			4	1			1					1	1	10	1			1 P														
6	Harada Heritage Park	Community Sports	30.72			3	5	1	3	1	2			3	1	1	38	2			5 L ⁵			1	1 P ⁶				1	2 L O P ⁴					
7	James C. Huber Park	Neighborhood Sports	12.56			8	1	1	1					1	2	2	13	1			1 L P ²		2 (.5 crt) L	1					1	3 L P ⁷			2 L		
8	McCune Family Park	Neighborhood Sports	11.85			6	5	2		2				1	2	2	17	1					2 - (.5 crt) L	1				2 L P		1 L			2		
9	Mountain View Park	Neighborhood	7.87			9	1	1	1	2				1	2	2	10	1					1 L				1						2 L		
10	Orchard Park	Neighborhood Sports	9.84			9	2	6						1	2	2	11	1			2 L P		2 - (.5 crt) L	1					1	2 L O P				2	
11	Providence Ranch Park	Neighborhood Sports	12.79			14	2	4		2				1	2	2	13	1			1 L P ¹		4 - (.5 crt) L	1				2 L P ¹		1 L O P ³					
12	Riverwalk Park	Community Nature	22.36	9.36		1	1	2			1	1	1	1	1	1	9	1	1							1									
			160.00	9.36																															
Parks (Planned)																																			
13.1	Eastvale Community Park Phase I	Community	46.53																																
13.2	Eastvale Community Park Phase II	Community	27.64																																
			234.17																																
Community Center (Planned)																																			
1	Eastvale Community Center (Under Construction)	Community Center																		1		2				2									
Jogging/Running/Bike Trail																																			
1	Eastvale Trail	Trail	1.2 mi																	1															

DEFINITIONS L = Lighted P = Practice Field/Court O=Overlay Field **Used for Games by Organized Youth Sports Leagues**

- 1) Of the two fields at Providence Ranch Park, one is used for baseball and softball practices, one is used for softball practices only.
- 2) Field used for adult kickball.
- 3) One additional lighted overlay field is used for soccer practice.
- 4) Only two fields being used for soccer practice. Planned renovations include four fields total.
- 5) Includes grass basin field used for Tee Ball. Park reconfiguration will add one youth field.
- 6) Used for games for flag football.
- 7) Empire Soccer Club uses a total of six fields of varying sizes: three for games and six for practice.

Exhibit 2.4-2 Parks and Recreation Facilities

JCSD PARK AND RECREATION FACILITIES			PARK FACILITIES																	SPORTS FACILITIES																	
KEY	FACILITY	TYPE	Parkland Acreage	Undeveloped	Amphitheater	Barbeques	Bike Rack	Community Building	Dog Bag Dispenser	Dog Park	Electrical Outlets	Equestrian Arena (Corral)	Equestrian Staging Area	Exercise Course	Parking	Playground / Tot Lot	Picnic Shelter / Gazebo	Picnic Tables (includes two benches)	Restroom	Tot / Picnic Linage	Baseball (youth)	Basketball (indoor-in Gymnasium)	Basketball (outdoor)	Concession Building	Football Field	Gymnasium	Frisbee Golf	Multi-Purpose Field	Softball (youth)	Skate Park	Soccer Field	Spray Play	Swimming Pool	Tennis Court	Volleyball		
Schools (Existing)																																					
1	Augustine Ramirez Elementary	School														1							3						1								
2	Clara Barton Elementary	School																																			
3	Eastvale Elementary	School														1													1								
4	Eleanor Roosevelt HS	School			1																2	2	6 P		1			1					1	10			
5	Harada Elementary	School																				3						1									
6	River Heights Intermediate	School														1					1		9					1									
7	Rosa Parks Elementary	School																				4						1									
Schools (Planned)																																					
8	Yorba Elementary																																				
DEFINITIONS			L = Lighted P = Practice Field/Court O=Overlay Field U=Used for Games by Organized Youth Sports Leagues																																		
1) Of the two fields at Providence Ranch Park, one is used for baseball and softball practices, one is used for softball practices only.																																					
2) Field used for adult kickball.																																					
3) One additional lighted overlay field is used for soccer practice.																																					
4) Only two fields being used for soccer practice. Planned renovations include four fields total.																																					
5) Includes grass basin field used for Tee Ball. Park reconfiguration will add one youth field.																																					
6) Used for games for flag football.																																					
7) Empire Soccer Club uses a total of six fields of varying sizes: three for games and six for practice.																																					

Exhibit 2.5-1 Parks and Recreation Facilities - Schools

2.5 JOINT USE SCHOOL FACILITIES

With one third of the population of the JCSD Parks territory under the age of 18, school facilities play an important role in family life and routine. Within the JCSD Parks territory, there are seven (7) public school campuses. School locations and names are identified on Exhibit 2.5-1. An eighth school, Yorba Elementary, is planned for development. The JCSD has an established Joint Use Agreement with the Corona-Norco Unified School District, which allows the JCSD to utilize Corona-Norco Unified School District facilities during non-school hours. The agreement also permits the Corona-Norco Unified School District to utilize the park and recreation facilities of the JCSD. Currently the JCSD Parks and Recreation Department utilizes the school facilities at Clara Barton Elementary, Eastvale Elementary, Rosa Parks Elementary, and Eleanor Roosevelt High School.

Specific programs offered at these facilities are discussed in Section Four.

2.6 ADJACENT PARKS AND RECREATION FACILITIES

Significant recreational amenities exist close to the JCSD Parks territory, offering a diverse set of recreational opportunities. While residents may use them, they are not included in the demand and needs analysis. They include:

- › Prado Regional Park (Prado Basin Park): a 2,000+ acre regional park located offering fishing, camping, hiking, biking and nature trails, golf courses, a shooting range, archery range, horseback riding, disc golf and picnic facilities.
- › Chino Hills State Park: a 12,500 acre open space park with equestrian, mountain bike, and hiking trails.
- › Cleveland National Forest: the JCSD Parks territory is in close proximity to the northern portion of the Cleveland National Forest, a significant recreational resource with wilderness areas, undeveloped and developed camp sites, hiking, equestrian, and mountain biking trails.
- › The Cove – Jurupa Aquatic Center: a 7.5 acre aquatic center located in Riverside which offers competitive and recreational swimming facilities.

2.7 PRIVATE AND COMMERCIAL RECREATION FACILITIES

Non-public facilities play a role in meeting the recreational needs of the residents of the JCSD Parks territory. The network of private facilities within the JCSD is made up of businesses, churches, clubs, private schools, homeowner Associations, and organizations.

This Master Plan does not provide a detailed inventory of private and commercial facilities since the JCSD Parks and Recreation Department neither controls, maintains, ensures availability, nor programs them. These recreation resources are therefore not credited toward satisfaction of the JCSD Parks and Recreation Department acreage or facility goals for public parks.

2.8 EXISTING AND PLANNED TRAILS

Trails and bike paths are part of the recreational amenities for a community and may provide walking, jogging, bicycling, hiking, and equestrian activities. Trails and bike paths can also serve as an important part of the transportation network by providing pedestrian and bicycle-friendly transportation options and alternatives to vehicular transportation. The Master Plan identifies the existing and planned trails within the JCSD Parks territory and makes trail recommendations in Section Five.

EXISTING TRAILS

The Santa Ana River Trail is a planned regional recreational trail and bikeway corridor, which when complete, will extend 110-miles from Big Bear Lake in the San Bernardino Mountains, to the mouth of the Santa Ana River, at the Pacific Ocean. The corridor runs along the southern portion of the JCSD Parks territory, the completed portion within the JCSD Parks territory is also referred to as the Eastvale Trail. Currently 1.25 miles of the trail is completed within the JCSD Parks territory, and serves as a multipurpose trail, by providing both a paved portion for pedestrians and cyclists as well as a “soft surface,” decomposed granite pathway for equestrians. Exhibit 2.8-1 identifies the completed portions of the Santa Ana River Trail within the JCSD Parks territory boundary and the immediate vicinity.

SECTION TWO

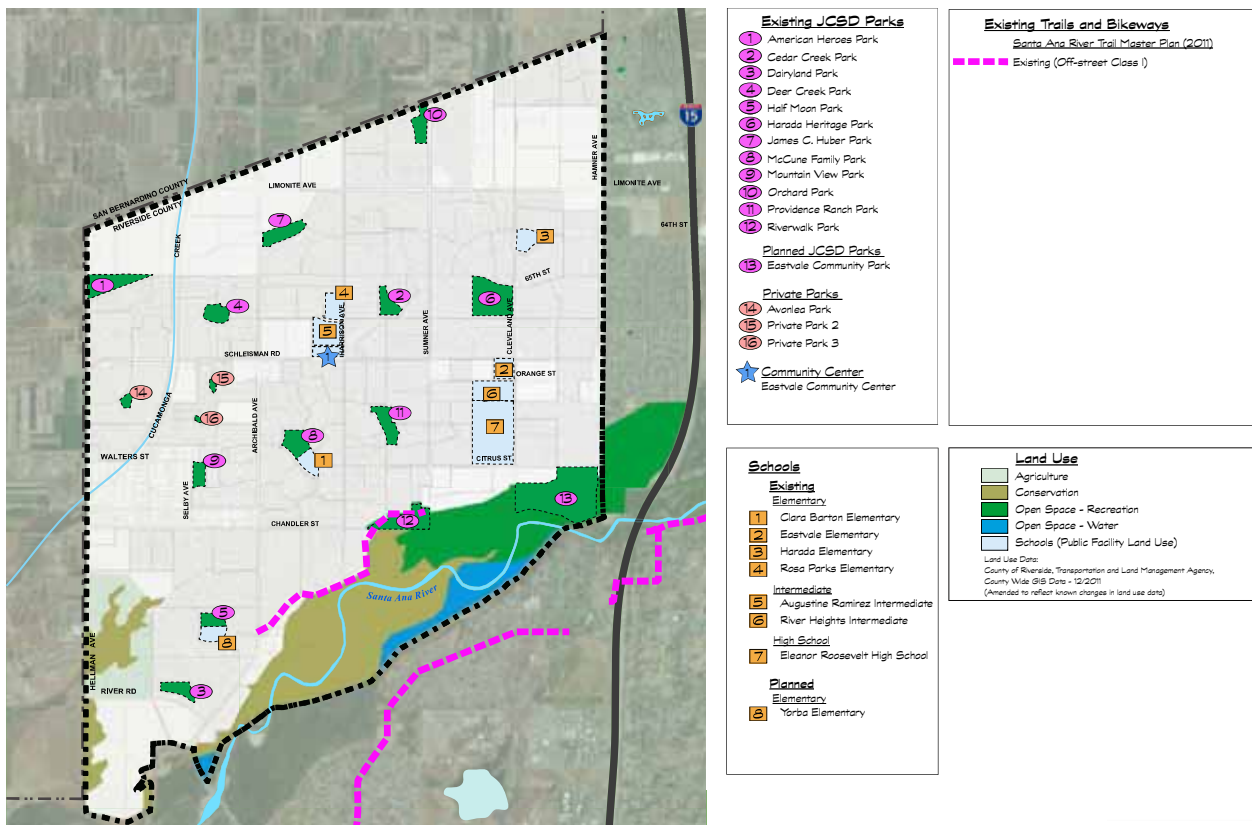


Exhibit 2.8-1 Existing Trails

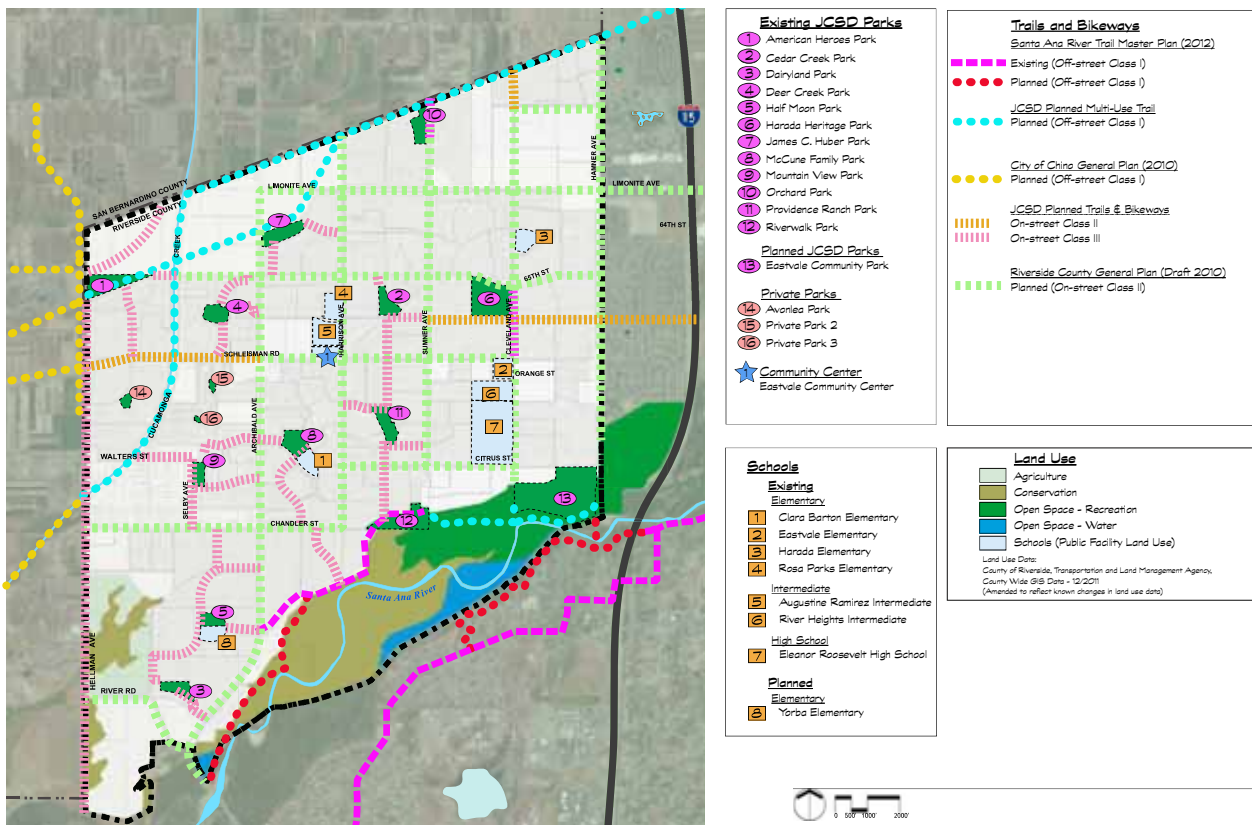


Exhibit 2.8-2 Planned Trails

PLANNED TRAILS

The City of Eastvale's General Plan (Public Hearing Draft, March 2012) indicates that the City of Eastvale does not have an independent system of public bike paths, but is included as part of the County's planned bikeway system. The JCSD Parks and Recreation Department has been moving forward and expanding plans for the trails identified by Riverside County, which include a significant Class I (off-street) bike path along Cucamonga Creek that would create a north-south recreational trail corridor through the JCSD Parks territory, and connect residents to the open space opportunities of the Santa Ana River and Prado Regional Park. Class II bike lanes, (provide a signage and a striped lane for one-way, on-road bike travel) are another significant component of the transportation network plans, and would create additional connections to parks, schools, and commercial centers.

Exhibit 2.8-2 also includes Class I and Class II trails within and around the JCSD Parks territory, which are identified in available plans for the Santa Ana River Trail, the Riverside County General Plan, and the City of Chino General Plan. Exhibit 2.8-2 also identifies the Class II and Class III bike trails planned by the JCSD Parks and Recreation Department (Class III bike routes are on-road, bicycle routes with signage that do not have a painted bike lane.)

2.9 OPPORTUNITY SITES

The Master Plan process identifies “opportunity sites” which are potential locations for future parks and recreation facilities.

There are three (3) categories of opportunity sites, which are located on Exhibit 2.9-1:

Planned and Not Designed: These are JCSD owned properties, which are planned to be developed as parkland, but the design and facilities have not been determined.

- › *Eastvale Community Park Phase II*

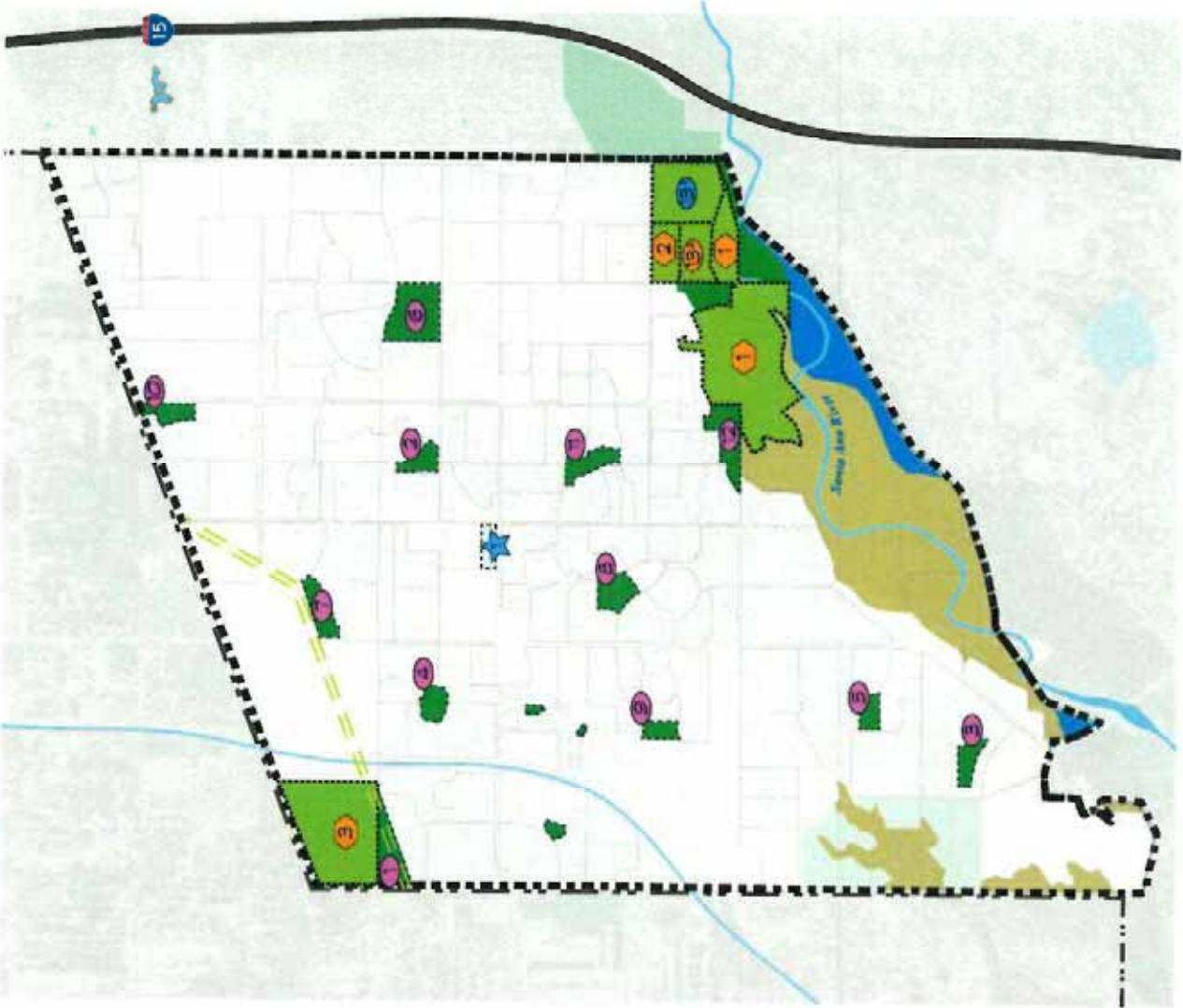
Unplanned: These sites are potential recreation facilities that would require negotiation, dedication, or planning revisions to secure their use as parks and recreation facilities.

- › *Southern California Edison Easement*

Acquisition Sites: These sites have been identified as potential properties to be considered for acquisition.

- › *Altfillisch Properties Parcels*
- › *Parcel North of Phase II of Eastvale Community Park*

The Master Plan makes an important distinction between two phases of development planned for Eastvale Community Park; while both of these phases are “planned,” phase II has not been designed and is considered as an “opportunity site” for future facilities.



Existing

- 1 American Heroes Park
- 2 Cedar Creek Park
- 3 Doryland Park
- 4 Deer Creek Park
- 5 Half Moon Park
- 6 Horado Heritage Park
- 7 James C. Huber Park
- 8 McCune Family Park
- 9 Mainstem View Park
- 10 Orchard Park
- 11 Providence Ranch Park
- 12 Riverwalk Park

Planned and Designed

- 13 Escondido Community Park (Phase I)
- ★ Escondido Community Center

Opportunity Sites

Planned Not Designed

- 14 Escondido Community Park (Phase II)

Planned Hiking/Biking Connector Trail

- == Southern California Edison Easement

Acquisition

- 1 Escondido Community Park Expansion
- 2 Antilisch Properties Parade
- 3 Parcel North of Phase I
- 4 American Heroes Park Expansion
- 5 Northern Parcel

