

IN THIS ISSUE

Local Water Treatment

JCSD by the Numbers

Customer Appreciation

Upcoming Events

Mapping our District

Santa Ana River Trail Detour

Winter Watering Guide

Cash in on Rebates

Find it Fast Directory

Join Flash Vote

Connect with us:

 www.facebook.com/JCSDistrict

 www.facebook.com/JCSDparks

 [@Jcsdcommunity](https://www.instagram.com/Jcsdcommunity)

 [@JCSDTweets](https://twitter.com/JCSDTweets)

 [JCSDvideos](https://www.youtube.com/JCSDvideos)

First-of-its-kind facility expands local water supplies



Jurupa Community Services District is employing a groundbreaking technology to create a sustainable water supply and save money for its **120,000 customers**.

In 2017, the District and other local agencies that draw groundwater from the Chino Basin unveiled a first-of-its-kind facility that converts wastewater into high-quality drinking water and turns the remaining solids into a product that can be sold for agriculture.

The **Concentrate Reduction Facility**, or CRF, is an important addition to the District's portfolio because it extends local water supplies, which are the most reliable in times of drought.

"JCSD is lucky to have a 100 percent local supply and we are always looking for ways to capitalize on that. The CRF is a good investment in the future for our region and its residents," General Manager Todd Corbin said.

Water pumped from the Chino Basin starts its journey to the tap at another long-established facility, where it is treated to meet state and federal drinking water standards.

Before the CRF was built, JCSD paid for the byproducts of the treatment process to be disposed of in the Inland Empire Brine Line, which transports the region's salty wastewater to the ocean.

Now, using a softening process, filtration and secondary reverse osmosis, the CRF turns wastewater into high-quality drinking water; the leftover solids – primarily calcium, magnesium and salt – can be used in compost. Deposits to the brine line are **reduced by 70 percent**.



Eventually, the treated water makes its way to homes and businesses through JCSD's **452 miles of water lines**.

JCSD BY THE NUMBERS

Sewer System:



JCSD provides sewer services to more than 29,000 homes and businesses within a 41-square-mile service area.



3 regional treatment plants



8 million gallons of flow per day



12 pumping stations



50 miles of sewer main video-inspected in 2017



230 miles of sewer main cleaned in 2017



369 miles of sewer mains – enough to pipe all the way to San Francisco



7,314 manholes



Customer Appreciation Days



A JCSD customer visits the District offices during Customer Appreciation Days.

JCSD held its first annual Customer Appreciation Days to celebrate those we serve. About 350 customers who stopped by the District's Harrel Street offices were able to select a free water-saving gift such as a hose nozzle, a water pitcher, and a bucket for capturing water while the shower warms up.

The event gave JCSD staff an opportunity to talk about water supplies, conservation and rebates, and to highlight District projects.

Next year's Customer Appreciation Days will be even bigger!



Upcoming Events

Save The Date!

Learn about the plans for the I-15 Express Lanes Project at an Open House.

February 8 from 5:30 p.m. to 7:30 p.m.

At Nellie Weaver Hall
3737 Crestview Avenue, Norco.



Do you have an attractive water-efficient landscape?

Don't miss an opportunity to be recognized and rewarded for your achievement!

For several years, water agencies from western Riverside and western San Bernardino counties have come together to sponsor the Inland Empire Landscape Contest, which recognizes residents who have successfully shown that saving water can be beautiful.

Prizes range from \$500 to \$1,000

The contest is open for online photo submissions between **April 1 and May 31.**

To enter, and for more details and inspiration, visit www.InlandEmpireLandscapeContest.com.

Make a Water-Wise Choice!

Do you need help choosing the right water-efficient plants for your garden?

Come to a **FREE CLASS** sponsored by JCSD for tips on water-wise landscaping. Learn about plants, irrigation, pest prevention and landscape materials design, and get ready for Spring!

Join us on March 31 from 10 a.m. to noon

At Jurupa Community Services District,
11201 Harrel Street, Jurupa Valley.

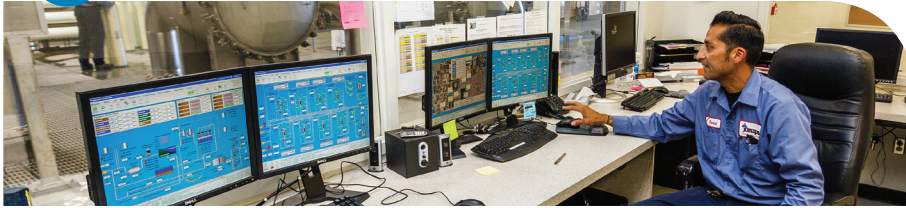
RSVP (951) 727-8002 or email savewater@jcsd.us



For additional information about JCSD's educational programs and upcoming events, please visit www.jcsd.us or call 951-727-3521.



Mapping our District, the Power of GIS



Most people are familiar with smartphone maps that display the fastest route to a destination using a geographic information system, or GIS. Jurupa Community Services District uses the same technology to track and manage its equipment and assets such as pipes, street lights and park equipment.

Information about these assets are stored in a database that can be converted into a map using longitude and latitude. GIS allows details to be added such as length or width, material and age. This helps JCSD personnel plan for aging infrastructure replacement and emergency services.

GIS is an important money-saving tool for the District and its customers. In the event of an emergency, GIS provides field crews with information to locate necessary equipment such as valves and hydrants. The ability to turn off flowing water quickly minimizes damage to property and improves efficiency.



Winter Watering Guide

As the days grow shorter and winter weather rolls into Southern California, it's important to adjust outdoor watering habits.

With less sunlight and cooler temperatures, evaporation naturally slows, allowing plants to absorb more water than in the warmer seasons. This means during winter, plants require less water to thrive. Adjusting sprinkler schedules and cutting back on weekly watering is a simple, effective way to responsibly maintain landscapes in the cold season.

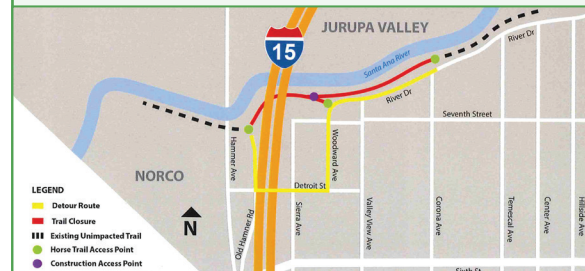


In addition, different varieties of grass require varying amounts of water, so be sure to monitor lawns and adjust schedules accordingly.



Santa Ana River Trail Detour

Part of the equestrian trail on the Santa Ana River Trail between Old Hamner Road and Corona Avenue will be closed for vegetation clearing and bridge construction that is part of the Interstate-15 Express Lanes Project. A detour is now available and will be in place through 2020.



Stay Connected:



www.i15project.info



15ExpressLanes



(844) 415-9777



Cash in on Rebates

JCSD residents and commercial customers can receive rebates for qualified water-saving products. The rebates are issued on a first-come, first-served basis, while funding lasts.

Products eligible for a rebate:

- High-Efficiency Clothes Washers
- Premium High-Efficiency Toilets
- Weather-Based Irrigation Controllers
- Rain Barrels
- Soil Moisture Sensor System
- Cistern

To apply for a rebate and to view qualifying products and details, visit: www.jcsd.us

Find It Fast Directory

JCSD Services (includes emergencies)	(951) 685-7434
JCSD Conservation Hotline	(951) 727-3521
JCSD Parks & Landscaping	(951) 727-3524
JCSD Recreation Classes	(951) 727-3524
Graffiti Hotline	(951) 727-3500

City Halls

City of Eastvale	(951) 361-0900
City of Jurupa Valley	(951) 332-6464

Utilities

JCSD (water and sewer)	(951) 685-7434
So Cal Edison (electricity)	(800) 655-4555
So Cal Gas (gas)	(877) 238-0092
Time Warner Cable (TV)	(888) 892-2253
Charter Communications	(855) 757-7328
DirectTV (TV)	(888) 777-2454
AT&T (telephone)	(800) 288-2020
Verizon (telephone)	(800) 837-4966
Burrtec (trash) <i>Jurupa Valley</i>	(951) 786-0639
Waste Management (trash) <i>Eastvale</i>	(800) 423-9986
Emergency Services	911

Public Safety (non-emergency)

Fire Department	(951) 940-6900
Sheriff's Department	(951) 776-1099
Animal Services	(888) 636-7387

Other Services

Jurupa Area Recreation and Park District	(951) 361-2090
Jurupa Mountains Discovery Center	(951) 685-5818
Jurupa Valley Citizens Patrol	(951) 955-9225

Local Libraries

Eastvale Branch Library	(951) 273-1520
Glen Avon Library	(951) 685-8121
Rubidoux Library	(951) 682-5485

Riverside Public Health

(Free or low-cost health services)

Jurupa Family Care Center	(951) 360-8795
For Appointments	(800) 720-9553
Corona Family Care Center	(951) 272-5445
For Appointments	(800) 720-9553

School Districts

Jurupa Unified School District	(951) 360-4100
Corona-Norco Unified School District	(951) 736-5000

Chambers of Commerce

Eastvale Chamber of Commerce	(951) 768-6000
Jurupa Valley Chamber of Commerce	(951) 681-9242
Norco Chamber of Commerce	(951) 737-6222

Post Office

U.S. Post Office	(800) 275-8777
------------------	----------------



COMMUNITY SERVICES DISTRICT

Proudly serving Jurupa Valley and Eastvale

11201 Harrel Street
Jurupa Valley, CA 91752



Your opinion does matter!



Do you have *one minute* a month?
Make Jurupa Valley and Eastvale better.

OF COURSE YOU DO!

Jurupa Community Services District needs your input to serve you better.

You can help by answering a few questions about once a month.

Please sign up for FlashVote today! It's free, fast and fun.

- ✓ FlashVote helps you make a difference in your community.
- ✓ We want to know what we should be doing
Better ~ Faster ~ Cheaper ~ Differently.
- ✓ You can offer feedback or suggestions in a Flash!
- ✓ Results are provided in just a few days.

Why Join FlashVote?

- ✓ Your personal information is never shared with anyone.
- ✓ Surveys take about one minute each time. That's all.
- ✓ You help Jurupa Community Services District serve you better.

Vote ▶

Sign up at: www.flashvote.com/jcsd
Or call 775-235-2240