

# EASTVALE<sup>®</sup> *Edition*

Winter 2017 | January - March

## NEW YEAR NEW YOU!

**NEW FITNESS CLASSES PG. 13**



**Parks  
Make  
Life  
Better!**



**JCSD**  
PARKS & RECREATION DEPARTMENT

### IN THIS ISSUE:

Youth & Adult Sports  
Page 14

Bridal Expo  
Page 19

Mature Adults  
Page 33

Community Information • Recreation Activities • Park Guide



**Jurupa Community Services District  
Parks and Recreation Department  
Administrative Offices**

Eastvale Community Center  
13820 Schleisman Road  
Eastvale, CA 92880  
Hours: M-Sa: 8am-10pm  
Su: 10am-6pm  
951.727.3524 | 951.727.3506 fax  
parks.jcsd.us

Harada Neighborhood Center  
13099 65th Street  
Eastvale, CA 92880  
Hours: M-F: 8am-9pm  
Sa: 8am-8pm | Su: 10am-6pm

**Jurupa Community Services District  
Board of Directors**

Kenneth J. McLaughlin, President  
Betty A. Anderson, Vice President  
Joan E. Roberts, Ph.D., Director  
Jane F. Anderson, Director  
Richard "Dickie" Simmons, Director

**Eastvale Parks Commission**

Jane F. Anderson, Chairperson  
Richard "Dickie" Simmons, JCSD Board member  
Pending appointment, Eastvale Council member  
Pending appointment, Eastvale Council member

**Jurupa Community Services District**

Todd Corbin, General Manager

**Parks & Recreation Department**

Richard "Ric" Welch, CPRE  
Director of Parks & Community Affairs - Ext. 516

Rafael Gonzalez  
Parks & Recreation Manager - Ext. 505

Enswins Cordero, MPA  
Parks Services Supervisor - Ext. 126

Duje Babarovic  
Recreation Coordinator - Ext. 223

Victoria Reyna  
Recreation Coordinator - Ext. 224

Wendy Landreth, CPRP  
Administrative Assistant - Ext. 516

Stacy MacBeth  
Administrative Secretary - Ext. 120

*Connect with us:*



**parks@jcsd.us**



**@jcsdparks**

# Contents

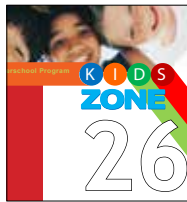
## Inside this Edition...



<b>Facilities &amp; Parks Map</b>	<b>3</b>
<b>Eastvale Town Hall Update</b>	<b>4</b>
<b>CNUSD News</b>	<b>6</b>
<b>City of Eastvale News</b>	<b>7</b>
<b>Conservation Information</b>	<b>8</b>



<b>Recreation Guide</b>	
<b>Sports</b>	<b>10</b>
<b>Martial Arts / Fitness</b>	<b>14</b>



<b>Dance</b>	<b>16</b>
<b>Music</b>	<b>20</b>
<b>Arts</b>	<b>21</b>
<b>Child Development</b>	<b>24</b>



<b>Special Interest</b>	<b>25</b>
<b>Kids Zone</b>	<b>26</b>
<b>Computer Technology</b>	<b>30</b>
<b>Class Registration</b>	<b>34</b>

## Numbers to Know

### GOVERNMENT & PUBLIC SERVICES:

City of Eastvale	(951) 361-0900
Department of Motor Vehicles	(800) 777-0133
Code Enforcement	(951) 361-2888
Animal Control	(951) 358-7387
Vector Control	(951) 340-9792
Graffiti Removal	(951) 727-3500
Weed Abatement	(951) 826-5341

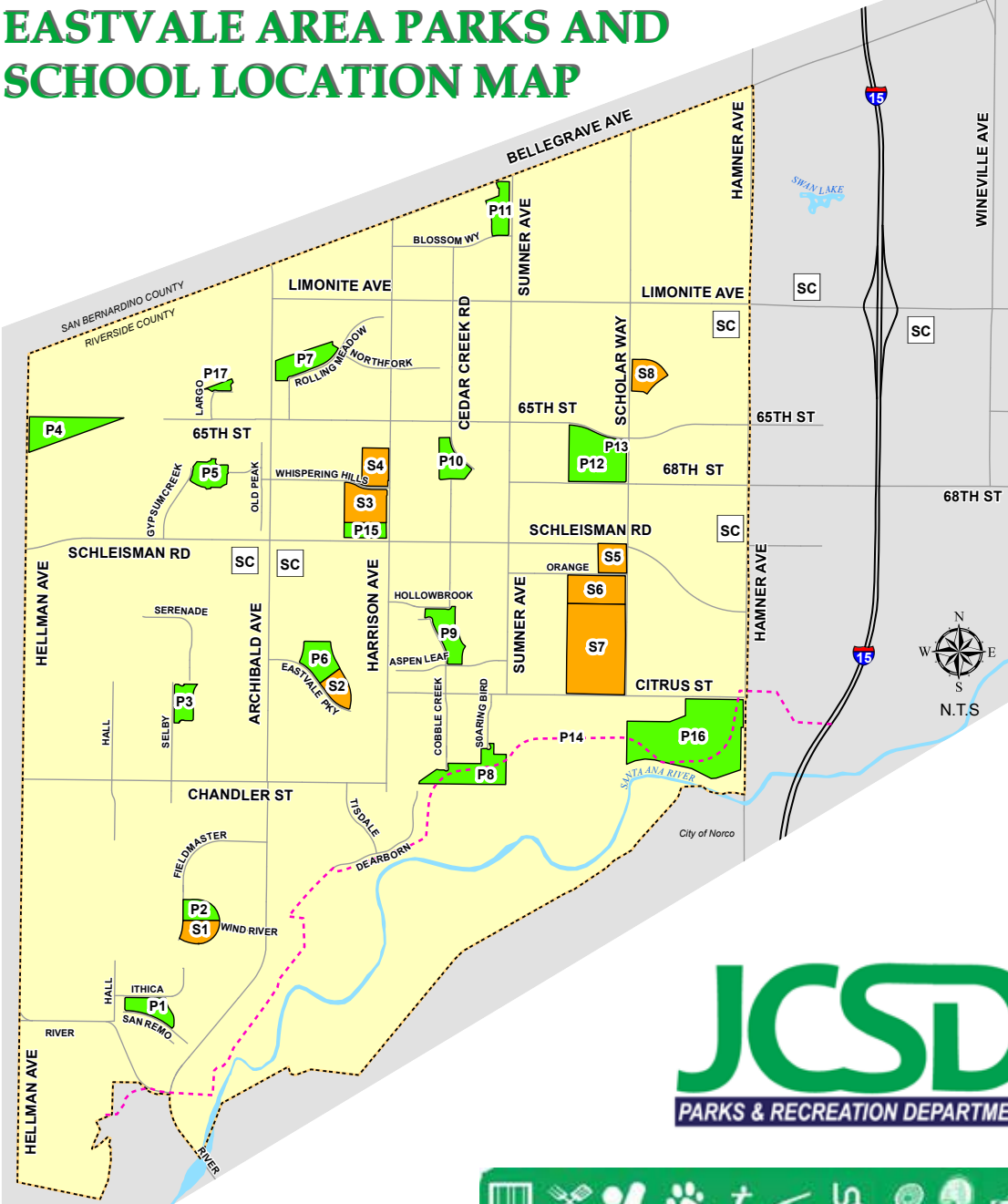
### EMERGENCY SERVICES:

Fire and Emergency Medical Response	(951) 657-2161
Riverside County Sheriff	(951) 776-1099
California Highway Patrol	(909) 383-4247
Flood Emergency Hotline	(951) 955-1230

### UTILITIES AND SERVICES:

Water and Sewer Service to the City of Eastvale	(951) 685-7434
Waste Management	(800) 423-9986
Southern California Edison	(800) 655-4555
Southern California Gas	(800) 427-2200

# EASTVALE AREA PARKS AND SCHOOL LOCATION MAP



SCHOOLS	
S1	Ronald Reagan Elementary
S2	Clara Barton Elementary
S3	Augustine Ramirez Intermediate
S4	Rosa Parks Elementary
S5	Eastvale Elementary
S6	River Heights Intermediate
S7	Eleanor Roosevelt High
S8	Harada Elementary

KEY

Parks

Schools

SC

 Shopping Centers

---

 Santa Ana River Trail



Play Area	BBQ	Baseball	Dog Park	Skate Park	Facility Rentals	Electricity	Tennis	Basketball	Trail	Water Play	Restrooms	Bike	Soccer	Disc Golf	Volleyball
-----------	-----	----------	----------	------------	------------------	-------------	--------	------------	-------	------------	-----------	------	--------	-----------	------------

## PARKS AND FACILITIES

P4	American Heroes Park   6608 Hellman Avenue	◆	◆		◆		◆	◆		◆		◆		◆	
P10	Cedar Creek Park   6709 Cedar Creek Road	◆	◆			◆	◆			◆	◆			◆	
P1	Dairyland Park   14520 San Remo		◆		◆					◆	◆				
P5	Deer Creek Park   6785 Iron Horse Lane	◆	◆	◆		◆					◆			◆	
P15	Eastvale Community Center (ECC)   13820 Schleisman Road					◆	◆		◆		◆				
P16	Eastvale Community Park (ECP)   12750 Citrus Street						◆			◆		◆	◆	◆	
P2	Half Moon Park   14383 Cherry Creek	◆	◆	◆		◆	◆				◆				
P12	Harada Heritage Park & Batting Cages   13099 65th Street	◆	◆	◆	◆	◆	◆				◆			◆	
P13	Harada Neighborhood Center (HNC)   13099 65th Street					◆	◆				◆				
P7	James C. Huber Park   6411 Rolling Meadows	◆	◆	◆		◆		◆	◆		◆			◆	
P6	McCune Family Park   7450 Eastvale Parkway	◆	◆	◆		◆	◆	◆	◆		◆			◆	
P3	Mountain View Park   14444 Selby Avenue	◆	◆			◆	◆	◆	◆		◆				
P11	Orchard Park   5900 Festival Way	◆	◆	◆		◆			◆		◆			◆	◆
P9	Providence Ranch Park   7250 Cobble Creek	◆	◆	◆		◆	◆		◆		◆			◆	
P8	Riverwalk Park   7674 Soaring Bird Court	◆	◆			◆			◆			◆		◆	
P17	Symphony Park   <b>COMING SOON</b>	◆							◆		◆				

# Town Hall Update

By: Andrea Hove, Eastvale Resident

## • City News:

Eastvale's Mayor, Ike Bootsma, invited Residents to attend the next council meeting where the new council members will be sworn in. At press time, Brandon Plott was elected to fill the District 5 Council seat. Todd Rigby was elected to fill the District 1 Council seat and Joe Tessari was re-elected to his District 2 Council seat. Richard "Dickie" Simmons was elected to the Jurupa Community Services District (District seat #4). New seats take effect at the December meetings.

Mayor Bootsma announced Eastvale's growth in commercial development with the opening of the Amazon Fulfillment Center and the state of the art Volkswagen Group of America training facility. Costco will be presenting their development plans to the Planning Commission and will be targeting a Fall 2017 opening. The Costco site will include a 30 pump gas station and drive-thru car wash.

On November 5th, Eastvale held its 2nd Annual Community Clean Up and Paper Shredding Event. If you were unable to attend and have bulky items that you would like to dispose of, please call Waste Management at (800) 423-9986 to schedule a bulky item pick up. All Waste Management customers are allotted two FREE bulky item pickups a year. You are also allowed to exchange your trash, recycle, and green waste bins for new bins once a year.

At the September 14th Eastvale City Council meeting, the Council allocated funding for the 2016/17 fiscal year to continue the Military Banner Program. At the beginning of November, 10 new military banners were installed along Archibald Avenue honoring our active duty military personnel. The program is also funded by donations from local businesses, residents, and Eastvale non-profit organizations. All donations go towards the installation and maintenance of the program.

The City Council approved a Roadway Adoption Program for the City of Eastvale. This allows organizations, businesses, churches and individuals to adopt local pre-designated blocks of streets and keep them litter-free. Applications are being accepted for program implementation by January 2017.

Coming Soon: Smart and Final Extra! and Les Schwab Tires will be coming soon to the corner of Sumner and Limonite in the Eastvale Marketplace.

New Businesses: Eastvale Gateway:

Now Open: Amazing Lash Studio and Gateway MedSpa  
Stay informed by signing up for the SE-Citizen app. This FREE App allows citizens to report non-emergency issues such as: graffiti, park maintenance issues, pot holes, code enforcement issues, sewer issues, water leaks, frontage landscape issues and water waste. Stay informed of all the latest Eastvale related news, agendas, events and more by signing up for e-notification at [www.EastvaleCA.gov](http://www.EastvaleCA.gov)

Questions from the residents:

Q: What is the current status with regulating and monitoring Air BnB's and Birthing homes in Eastvale? What is the City policy? Why isn't the City doing anything about them? Answer: Investigations are done on a case by case basis. If you suspect a violation please report the home address to the City Code Enforcement Department. It's a difficult process to find and eliminate these types of homes in Eastvale. There are ongoing investigations involving multiple agencies. Please continue to report the suspected houses to the City, Sheriff's Dept., and/or your HOA as well.

Q: Has a hospital been chosen for the Goodman center? Answer: Discussions are still underway and once a lease agreement is signed, announcements will be made.

Q: Are you allowed to park your RV's on your driveways? And if not, why is the City so quick to give out street sweeping tickets and not for all the RV's we see parked all over Eastvale? Answer: The City of

Eastvale has an ordinance restricting RV parking. You are allowed to park your RV's on your side yard behind a 5 foot fence. They may be parked on your driveway or on the street for 48 hours, twice a month for loading and unloading only. Eastvale's Code Enforcement system is complaint driven, so by using the eCitizen app, you can easily file a complaint and submit a photo or video with a time stamp.

## • Eastvale Police Update:

Assistant Police Chief Scott Forbes answered resident questions.

Q: Back to the RV question previously, who handles the enforcement? Answer: City of Eastvale Code Enforcement would handle the RV parking violations during City business hours. After hours would be Eastvale PD. Please report violations by calling the non-emergency number (951) 776-1099. If these violations are not reported, the Police Department doesn't know that there is a problem. Posting issues on Facebook or the Nextdoor app will not generate a police response.

Q: How many police hours does Eastvale have? Answer: Eastvale currently has 90 patrol hours per day. 10 hour shifts, 9 officers per day, 365 days a year. This includes patrol officers, quality of life officers, Accident investigator, Motor officer, and Community Services officers. Included in the negotiated fees are the police facilities, vehicles, equipment, dispatchers, clerical/business office staff, specialized teams (aviation, gangs, homicide, internal affairs, hazardous materials, etc.), supervision, and legal defense. Eastvale PD does not currently have a substation at this time, but they do have an off-site work area so they don't have to drive back to the Jurupa Valley station.

Q: Question: Could Eastvale initiate a new bond to pay for increased police? Answer: There are a number of options available: grants, bonds; however, the Sheriff's department isn't involved in the raising of funds.

# Town Hall Update

**Q**uestion: Mailbox theft is on the rise again, how can we minimize? Driving to Corona to get our mail is inconvenient. Answer: Mail theft and vehicle burglaries continue to rise. There are 100's of the cluster mail boxes in Eastvale, so it's difficult to determine where and when mail theft crimes will hit next because they are so spread out. However, every two weeks, the Sheriff's Dept. has a Crime Impact meeting to map out where mailboxes are being targeted. It would also help to have cameras pointed at the mailboxes, develop a neighborhood watch system, pick-up your mail daily and report anything suspicious. The Nextdoor app is effective and closed to only those in your neighborhood.

**Q**uestion: How can we sustain the Neighborhood Watch program? Seems like it gets started and everyone is excited and then it tapers off. Answer: Deputy Meyers is responsible for helping to start the program in your neighborhood, but it's up to the Neighborhood Watch captains to keep it going. Block Captains should organize monthly or bi-monthly meetings to keep the neighborhood watch effective. Create online groups where only neighbors can share issues or problems on your street.

**I**f you are interested in becoming an Eastvale Police Department/Riverside County Sheriff's Department Volunteer, please contact the Department at (951)776-1099. Volunteers will be trained and equipped with a uniform and a vehicle. Volunteers supplement patrol and they are the eyes and ears for the Deputies and Police Officers. They also work special events, road closures, and traffic collisions.

## • Cal Fire Update:

**C**al-Fire: Battalion Chief Justin Scribner from Cal-Fire updated residents about the progress of Eastvale's new Fire Station #31. It's currently under construction on the west end of Eastvale off Chandler and Selby. Construction should be completed in Early 2017. Once opened, Eastvale Fire Department will be operating 2 engines and a staff of 6. Response times will continue to improve once Station #31 opens.

**S**parks of Love Toy Drive: The Fire Department's Annual Spark of Love Toy Drive takes place during the month of December and you can drop off toys at City Hall and at Station #27. They accept new and unwrapped items (toys, games, books, and school supplies) for children of all ages. Items for teens are also greatly needed. They also accept Gift Cards from general retail stores (such as Target & Wal-Mart).

## • Senator Roth Update:

**T**yler Madary, representing CA State Senator Richard Roth (District 31), informed residents efforts to restore VLF funding to our City. Senator Roth has had a discussion with the Governor's senior staff, which resulted in a tentative plan to add the VLF funding to the state budget. Other efforts include Senate Bill 269, which helps small businesses comply with ADA regulations and Senate Bill 866, which would help direct funding for veteran's housing.

## • JCSD Update:

**R**afael Gonzalez informed residents that wild boars have returned to feed on grass near the Santa Ana River, primarily impacting River Walk Park. There is also a delay with Eastvale Community Park - Phase II, but hopefully development efforts will be back on track soon. Phase II originally included a softball complex, playground, soccer field, additional parking, and another street exit.

**Q**uestion: With the delay for ECP Phase II, can the current parking, entrance, and exit plan be reexamined? Answer: Those park issues will be addressed by the JCSD board.

**J**CSD Community Affairs Supervisor, Allison Loukeh, reported that the Eastvale community met the voluntary conservation goal of 15%. Please ensure that your sprinklers aren't causing runoff; if you see any violations, please send a photo with the complaint via the E-Citizen app. Classes are also being offered at the JCSD regarding water conservation, turf replacement, and disposal issues. For instance: fats, oils and grease solidify in sewer pipes; therefore,

should not be put down the drain.

## • CNUSD Update:

**C**NUSD Communications Manager, Evita Tapia Gonzalez and Dr. Kim Lawe, STEM Academy Director proudly announced that the eSTEM (Science, Technology, Engineering and Math) Academy is open at ERHS with 107 students. They are currently in temporary classrooms and looking towards a 2018/2019 full opening. The groundbreaking ceremony will be February 3, 2017 at 10:00 a.m. A parent information night for interested current 8th grade students will be held in January. Go to [www.cnusd.k12.ca.us/estem](http://www.cnusd.k12.ca.us/estem) for more information.

## • Animal Control Update:

**O**fficer Mark Visyak gave statistics for the last 11 months in Eastvale. There were 3,276 calls for service: 35 quarantined dogs; 211 Deceased (dogs, cats); 322 impounds (dogs, cats); 96 calls for animal cruelty; 12 kennel violations (over 4 dog, 9 cat limit); 18 returned dogs to owners (thanks to microchips); 49 citations for no current vaccinations, microchip, spay/neuter, leash law; 106 dead/wild animal pickups; 34 calls for barking dogs.

**Q**uestion: Can I trap an opossum? Answer: Yes, then call us and we will relocate them. You can rent a trap from Animal control or you can purchase a cat trap. On a side note: Opossums are exceptionally non-aggressive and non-destructive. They will not harm people or pets. However, they are wild animals and should not be handled since they will defend themselves if necessary. Opossums do not dig into the soil nor do they destroy property. They eat all types of insects, sometimes eat rats and mice, regularly prey on shrews and moles, and even consume dead animals. They are known as "Nature's Little Sanitation Engineers". In general, opossums present a far lower health risk to humans than dogs and cats and are more resistant to rabies than any other mammal.

*The next Eastvale Town Hall is February 27 at 6:30 PM*



## Eastvale STEM Academy Receives AIAIC Award

On November 10, 2016, LPA Inc. was awarded the Merit Award from the American Institute of Architects Inland California (AIAIC) for the design of the Eastvale STEM Academy building and learning spaces. The ceremony was held at the Riverside Art Museum. The Eastvale STEM Academy will feature an internal courtyard quad, parking, and a campus connection to ERHS.

Eleanor Roosevelt High School is set to become the district's second STEM school. The Eastvale STEM Academy building is scheduled to open in 2018.

Students enrolled in the STEM program will be exposed to a learning environment which requires critical thinking, problem solving, innovation and collaboration. These skills will be integrated into the STEM curriculum of real-world science, technology, engineering and mathematics.

## Eastvale STEM Academy To Break Ground

The Eastvale STEM Academy building is coming in 2018! The official breaking ground ceremony will take place on February 3rd, 2017 at Roosevelt High School. This exciting event marks the beginning of construction after months of planning, conceptualizing, and preparing for the future.

The Eastvale STEM Academy at Eleanor Roosevelt High School is committed to providing your student with the same rigorous curriculum in a dynamic, innovative learning environment as offered on our main campus.

The Eastvale STEM Academy is built on three founding principles: Access, Collaboration, and Partnership. We believe all students should have access to a rigorous curriculum, whether on the main campus or at the STEM Academy. Collaboration is encouraged at all levels: students to students, staff to staff, school and district to industries and educational institutions. We also focus on preparing our students to be college and career ready in the STEM fields upon graduation through partnerships.



## ESTEM ACADEMY UPDATES

[WWW.CNUSD.K12.CA.US/ESTEM](http://WWW.CNUSD.K12.CA.US/ESTEM)



## Holiday Exterior Displays and Safety Tips



With holidays fast approaching, the City of Eastvale would like to remind residents of the City's Municipal Code regarding temporary exterior holiday displays and some general decorating safety tips that will help everyone stay safe this season.

### Eastvale's Municipal Code Sec. 120.05.080.(c)(7)

Neighborhood Preservation Standards – Temporary exterior display and holiday display provides enforceable guidelines:

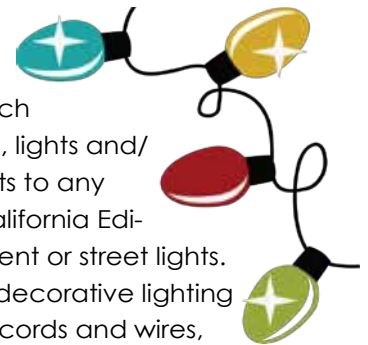
- a) Any temporary exterior display or holiday display shall **not** physically impede vehicular or pedestrian traffic on any street, sidewalk or right-of-way;
- b) Any temporary exterior display or holiday display shall be allowed for a period **not to exceed 45 consecutive days**.

For more information about the Neighborhood Preservation Standards, please visit the Municipal Code page on the City's website: [www.eastvaleca.gov/city-hall/office-of-the-city-clerk/municipal-code](http://www.eastvaleca.gov/city-hall/office-of-the-city-clerk/municipal-code)

If you have additional Code Enforcement questions, please feel free to call the Code Enforcement Department at City Hall at (951) 361-2888 or email [Code\\_Complaint@EastvaleCA.gov](mailto:Code_Complaint@EastvaleCA.gov).

### LIGHT DISPLAYS:

- Do not attach decorations, lights and/or ornaments to any Southern California Edison equipment or street lights.
- Do not use decorative lighting with frayed cords and wires, broken fuses or broken light bulbs.
- Do not use staples, nails or tacks to hang electrical cords. These can pierce the protective insulation.
- Use only Underwriters Laboratories (UL) approved lighting and extension cords.
- Plug no more than *three* strands of lights into each electrical cord/outlet.
- Remember to *unplug* decorative lights when you leave home and before going to bed.
- Don't tug on electrical cords – this may tear the insulation and expose wires.
- Do not *approach or touch* overhead power lines and avoid service drops (pole-to-house connections) when removing decorations – keeping ladders, long-handed tools and dangling light strands in mind too.



### CHRISTMAS TREE SAFETY TIPS:

For live trees, be sure to fill your tree stand with water and refill daily since heated rooms can quickly dry them out.

Never use lighted candles on or near holiday trees or decorations.

Don't use electrical ornaments or light strings on artificial trees that have metallic leaves or branch coverings.

To help avoid fires, remember to place your tree at least 3 feet away from all heat sources, such as fireplaces or space heaters.

Sources: ESFL.org, SCE.com



Jurupa Valley Sheriff's Station NON EMERGENCY Number: **(951) 776-1099**

### City of Eastvale

12363 Limonite Ave., Suite 910, Eastvale, CA 91752

T: (951) 361-0900 E: [info@eastvaleca.gov](mailto:info@eastvaleca.gov) W: [www.EastvaleCA.gov](http://www.EastvaleCA.gov)

The City News information is provided by the City of Eastvale and does not express the views & opinions of JCSD.

# Conservation News

## What do you know about water?

More than ever, water is on everyone's mind. Questions about the drought, reliability, future supply, and tap water remain at the forefront of discussions throughout our community. An important part of Jurupa Community Services District's role is to provide information to residents. This is accomplished through bill inserts, social media, and press releases, etc. In 2014, JCSD decided to increase water awareness using innovative methods to reach out to specific audiences. Two of those specific audiences were do-it-yourself (DIY) gardeners and high school students and teachers.

DIY gardeners are typically "early adopters" of landscape trends and heavily engaged with each other. That translates to a very active gardening network. JCSD has offered landscape classes in the past but JCSD decided to add new classes that were focused on a specific subject. An example is the recent "Art of Landscaping: Sun Tolerant Plants and Irrigation" class held last September. The class focused exclusively on drought tolerant plants and their specific irrigation needs. It was taught by an expert in that field and residents learned easy methods to implement small changes. An added feature was the class was held at the Eastvale Community Center (ECC) which is landscaped with drought tolerant plants. The ECC landscape provided the backdrop for a "walk-about" tour where the instructor could provide living examples.





Another example of reaching out to a particular audience is high school students and teachers. Almost all water agencies offer presentations or school assemblies to kindergarten through 5th grade students but very few provide education to middle and high school students. JCSD regarded this as an opportunity to improve education for the next generation of stakeholders. Once an

audience was selected, different methods were explored. The easiest answer was also the closest: the Santa Ana River. At 96 miles long, the Santa Ana River is the longest river in Southern California. The river begins in the San Bernardino Mountains and winds its way through cities, eventually completing

its journey to the Pacific Ocean at Huntington Beach. In partnership with Inland Empire Waterkeeper (IEWK), JCSD began offering field trips to the Santa Ana River at no charge to the school. Students explore water quality, plants, animals, and environmental issues. This is completed using traditional scientific methods of observation and experimentation. The students do, on occasion, get wet!



For more information or to schedule a field trip to the Santa Ana River or for any questions regarding drought regulations or water conservation programs, please call the Conservation Hotline at (951) 727-3521.

## Location Legend

Fee*-	Inside/Outside JCSD Parks Territory
ARIS-	Dr. Augustine Ramirez Intermediate School 6905 Harrison Avenue
CCP-	Cedar Creek Park 6709 Cedar Creek Road
DCP-	Deer Creek Park 6785 Iron Horse Lane
DLP-	Dairyland Park 14520 San Remo
ECC-	Eastvale Community Center 13820 Schleisman Road
ECP-	Eastvale Community Park 12750 Citrus Street
ERHS-	Eleanor Roosevelt High School 7447 Scholar Way
HNC-	Harada Neighborhood Center 13099 65th Street
JCHP-	James C. Huber Park 6411 Rolling Meadow Street
MVP-	Mountain View Park 14444 Selby Avenue
OP-	Orchard Park 5900 Festival Way
RPE-	Rosa Parks Elementary School 13830 Whispering Hills
RWP-	Riverwalk Park 7674 Soaring Bird Court
RINK-	The Rinks 4325 Prado Road, Corona, CA
FBBC-	Norco Fit Body Boot Camp 3230 Hamner Ave. Norco, CA

## Pee Wee Tennis 111001

Is your young child tired of watching the big kids have all the tennis fun. Well now there's a group just for the Pee Wees! This clinic is the perfect tennis intro. Students will learn the basics of the: forehand, backhand, volley, and serve in a coordination building, fitness friendly, fun, atmosphere. Your child will love joining in fun tennis games like: Popcorn Machine, Walk the Tennis Dog, and Alley Rally. We believe that tennis will bring each of our students more fun, fitness, and friendships for a lifetime. Please Note: Please bring your own tennis racket.

**Instructor: Tennis Anyone | Location: ERHS TENNIS COURTS**

CL #	Ages	Day/s	Time	Date	Wks	Fee*
A1	3-6	Tu,Th	6:30-7:15P	1/3-1/26	4	\$89/99
A2	3-6	Tu,Th	6:30-7:15P	1/31-2/23	4	\$89/99
A3	3-6	Tu,Th	6:30-7:15P	2/28-3/23	4	\$89/99
B1	3-6	Tu	6:30-7:15P	1/3-1/24	4	\$65/75
B2	3-6	Tu	6:30-7:15P	1/31-2/21	4	\$65/75
B3	3-6	Tu	6:30-7:15P	2/28-3/21	4	\$65/75
C1	3-6	Th	6:30-7:15P	1/5-1/26	4	\$65/75
C2	3-6	Th	6:30-7:15P	2/2-2/23	4	\$65/75
C3	3-6	Th	6:30-7:15P	3/2-3/23	4	\$65/75

## Match Play Tennis 121003

This new clinic is for Jr students ages 7-17 that are interested in learning to play matches. In this group everything that students do and learn will be geared toward match play. This is a perfect group for high school students looking to make the team or younger juniors that are ready to learn set play.

**Instructor: Tennis Anyone | Location: ERHS TENNIS COURTS**

CL #	Ages	Day/s	Time	Date	Wks	Fee*
A1	7-17	W	7:30-9:00P	1/4-1/25	4	\$74/84
B	7-17	W	7:30-9:00P	2/1-2/22	4	\$74/84
C	7-17	W	7:30-9:00P	3/1-3/22	4	\$74/84

## Beginning Tennis 121001

The focus of this academy is on learning the 4 major strokes of the game in a fun filled, fitness friendly atmosphere. Students will work to establish form on the forehand, backhand, volley, and serve. We believe that tennis will bring each of our students more fun, fitness, and friendships for a lifetime. Beginners over the age of 13 should start in the Junior Tennis Academy-Intermediate to Advanced.

**Instructor: Tennis Anyone | Location: ERHS TENNIS COURTS**

CL #	Ages	Day/s	Time	Date	Wks	Fee*
A1	7-13	Tu,Th	6:30-8:00P	1/3-1/26	4	\$109/119
A2	7-13	Tu,Th	6:30-8:00P	1/31-2/23	4	\$109/119
A3	7-13	Tu,Th	6:30-8:00P	2/28-3/23	4	\$109/119
B1	7-13	Tu	6:30-8:00P	1/3-1/24	4	\$74/84
B2	7-13	Tu	6:30-8:00P	1/31-2/21	4	\$74/84
B3	7-13	Tu	6:30-8:00P	2/28-3/21	4	\$74/84
C1	7-13	Th	6:30-8:00P	1/5-1/26	4	\$74/84
C2	7-13	Th	6:30-8:00P	2/2-2/23	4	\$74/84
C3	7-13	Th	6:30-8:00P	3/2-3/23	4	\$74/84

## Intermediate – Advance Tennis 121016

This is a Semi private tennis lesson for 2-4 Beginning Jr students, ages 7-13. This is the perfect setting for students wishing to learn in a smaller setting with a coach that is able to give them more individual attention.

**Instructor: Tennis Anyone | Location: ERHS TENNIS COURTS**

CL #	Ages	Day/s	Time	Date	Wks	Fee*
A1	7-13	W	7:30-8:30P	1/4-1/25	4	\$99/109
A2	7-13	W	7:30-8:30P	2/1-2/22	4	\$99/109
A3	7-13	W	7:30-8:30P	3/1-3/22	4	\$99/109
B1	7-17	W	6:30-7:30P	1/4-1/25	4	\$99/109
B2	7-17	W	6:30-7:30P	2/1-2/22	4	\$99/109
B3	7-17	W	6:30-7:30P	3/1-3/22	4	\$99/109

## Advanced Tennis 121002

This academy is for students that have either attained all 3 mastery levels in the Beginning Academy or are coming in with proper form on the major tennis strokes. This is a high energy dynamic, fitness, challenging, tennis program designed to bring students to a level where they have the tools to start playing matches. Beginning players ages 14 or older should start in this group.

**Instructor: Tennis Anyone | Location: ERHS TENNIS COURTS**

CL #	Ages	Day/s	Time	Date	Wks	Fee*
A1	7-17	Tu,Th	7:30-9:30P	1/3-1/26	4	\$119/129
A2	7-17	Tu,Th	7:30-9:30P	1/31-2/23	4	\$119/129
A3	7-17	Tu,Th	7:30-9:30P	2/28-3/23	4	\$119/129
B1	7-17	Tu	7:30-9:30P	1/3-1/24	4	\$84/94
B2	7-17	Tu	7:30-9:30P	1/31-2/21	4	\$84/94
B3	7-17	Tu	7:30-9:30P	2/28-3/21	4	\$84/94
C1	7-17	Th	7:30-9:30P	1/5-1/26	4	\$84/94
C2	7-17	Th	7:30-9:30P	2/2-2/23	4	\$84/94
C3	7-17	Th	7:30-9:30P	3/2-3/23	4	\$84/94

## Adult Tennis 131012

Adult players, levels Intermediate to Advanced, will benefit from this unique clinic. This academy gives the "big kids" an opportunity to work on improving their skills while getting a great workout and making new friends.

**Instructor: Tennis Anyone | Location: ERHS TENNIS COURTS**

CL #	Ages	Day/s	Time	Date	Wks	Fee*
A1	16+	Th	8:00-9:30P	1/5-1/26	4	\$69/79
A2	16+	Th	8:00-9:30P	2/2-2/23	4	\$69/79
A3	16+	Th	8:00-9:30P	3/2-3/23	4	\$69/79

**REGISTRATION OPENS**

**December 19, 2016**

in person or online at:  
*parks.jcsd.us*

**Pee Wee Soccer****111002**

This class will help kids get ready for team soccer. This is a soccer development program that teaches kids, ages 2.5-6, basic soccer movements and skills by storytelling, imagination, and play, while at the same time building confidence and self-esteem. Some parent participation may be required for kids ages 2.5-3. First half of class will focus on soccer activities and the second half of class will have kids play in small-sided games. All participants will receive an end of class goodie bag and participation award. Please Note: Arrive 15 minutes early to each class for check in. Please bring soccer ball (size 3) and water bottle each time. Shin guards are mandatory, cleats are optional.

**Instructor: SportFit | Location: DCP - SOCCER FIELD**

CL #	Ages	Day/s	Time	Date	Wks	Fee*
A	2.5-3	W	5:30-6:30P	2/1-3/8 6		\$75/85
B	4-6	W	6:30-7:30P	2/1-3/8 6		\$75/85

**TriFyft Basketball****111003**

Come and join TriFyft Sports and learn or improve the skills needed to become a skillful basketball player. Kids will have a great time with friends and coaches. Everyone will receive a class shirt.

**Instructor: Trifyft Sports | Location: ARIS Outside Basketball Courts**

CL #	Ages	Day/s	Time	Date	Wks	Fee*
A	3-4	Tu	5:00-5:45P	2/7-3/14	6	\$75/85
B	5-7	Tu	6:00-6:45P	2/7-3/14	6	\$75/85
C	8-12	Tu	7:00-7:45P	2/7-3/14	6	\$75/85

**TriFyft Tee-Ball****111004**

Here is a great chance for kids to be introduced to tee-ball in a fun and safe environment while learning the basics of the game. Every child will also be given a camp T-shirt. All of TriFyft Sports staff are passionate and dedicated to impacting the lives of children through the median of sports.

**Instructor: Trifyft Sports | Location: DCP SOCCER FIELD**

CL #	Ages	Day/s	Time	Date	Wks	Fee*
A	2-3	Th	5:00-5:30P	2/9-3/16	6	\$75/85
B	3-5	Th	6:30-7:15P	2/9-3/16	6	\$75/85
C	5-7	Th	5:30-6:15P	2/9-3/16	6	\$75/85

**Multi-Sport****111011**

Here is a great chance for kids to play their favorite sports all at one camp. This camp is designed to motivate children to be active and healthy while giving them the fundamental skills needed to succeed and grow in whichever sport they choose. Every child will be given a camp shirt. Please Note: No class Feb 18. Please Note: No class Feb 18

**Instructor: Trifyft Sports | Location: DCP SOCCER FIELD**

CL #	Ages	Day/s	Time	Date	Wks	Fee*
A	2-3	Sa	12:00-12:30P	2/11-3/25	7	\$75/85
B	3-5	Sa	11:00-11:45A	2/11-3/25	7	\$75/85

**TriFyft Soccer League****111013**

Your child will have a great time playing soccer while making new friends. While also learning the benefits of sportsmanship, sharing, and teamwork. Everyone will receive team shirt and medal. 1st day will be practice and team assignments. Please Note: No class Feb 18

**Instructor: Trifyft Sports | Location: DCP SOCCER FIELD**

CL #	Ages	Day/s	Time	Date	Wks	Fee*
A	2-3	Sa	9:30-10:00A	2/11-3/25	7	\$75/85
B	3-5	Sa	10:00-10:45A	2/11-3/25	7	\$75/85

**TriFyft Football****121017**

Come and join TriFyft Sports in its football camp and learn the basic to advance skills in football. This camp will teach football positions such as quarterback, running backs, wide receivers, line backers as well as offensive and defensive style practices in a fun and safe environment. All participants will be given a camp shirt.

**Instructor: Trifyft Sports | Location: DCP SOCCER FIELD**

CL #	Ages	Day/s	Time	Date	Wks	Fee*
A	4-7	F	5:30-6:15P	2/10-3/17	6	\$75/85
B	7-12	F	6:30-7:15P	2/10-3/17	6	\$75/85

**Community Leagues****Eastvale Girls Softball Association**

www.eastvalegirlssoftball.com

(951) 778-3472

**Eastvale Mustangs Youth Football & Cheer Program**

www.evmustangsfootball.com

(951) 531-7038

**Empire Soccer**

www.empiresoccerclub.org

(951) 817-5639

**Eastvale Little League**

www.eastvalerlittleleague.com

(951) 903-6515

**Eastvale Pop Warner Youth Football**

www.eastvalepopwarner.org

(951) 444-0557

**AYSO Eastvale #1605**

www.ayso1605.org

ayso1605@yahoo.com

**SandS Cricket Association Eastvale Cricket League**

www.sandscrickeassociation.net

(951) 454-8444

**Learn to Skate****121014**

Learn the basics of skating with either quad roller skates or roller blades. No experience needed. Skates are provided upon request.

**Instructor: The Rinks | Location: The Rinks**

CL #	Ages	Day/s	Time	Date	Wks	Fee*
A	4-14	Tu	4:30-5:30P	2/7-2/28	4	\$40/50

**Intro to Roller Hockey****121015**

Learn the basics of Hockey. Our class is designed to teach the fundamentals of skating, passing, stick-handling, and shooting. Basic roller skating experience needed. Gear provided for the duration of the class.

**Instructor: The Rinks | Location: The Rinks**

CL #	Ages	Day/s	Time	Date	Wks	Fee*
A	4-14	Tu	4:30-5:30P	2/7-2/28	4	\$40/50

## Karate Jujitsu/ Brazilian Jujitsu 111008

Students are taught discipline through body movement, control and coordination. Balance is honed using drills, reflex through evasive games, motor skills through exercise and anti-abduction techniques through class discussion and activities. Please Note: One time \$50 uniform fee due at first class meeting.

**Instructor: Will Cephas | Location: ECC Stage**

CL #	Ages	Day/s	Time	Date	Wks	Fee*
A1	4-8	Tu,Th	3:00-3:45P	1/3-1/26	4	\$60/70
A2	4-8	Tu,Th	3:00-3:45P	2/2-2/28	4	\$60/70
A3	4-8	Tu,Th	3:00-3:45P	3/2-3/28	4	\$60/70
B1	9-15	Tu,Th	3:00-3:45P	1/3-1/26	4	\$60/70
B2	9-15	Tu,Th	3:00-3:45P	2/2-2/28	4	\$60/70
B3	9-15	Tu,Th	3:00-3:45P	3/2-3/28	4	\$60/70

## Adult Self Defense 131010

Students are taught discipline through body movement, control and coordination. Balance is honed using drills, reflex through evasive games, motor skills through exercise and anti-abduction techniques through class discussion and activities. Please Note: There is a \$50 one time uniform fee due at the first class meeting.

**Instructor: Will Cephas | Location: ECC Stage**

CL #	Ages	Day/s	Time	Date	Wks	Fee*
A	18+	F	9:00-10:00A	1/6-1/27	4	\$60/70
B	18+	F	9:00-10:00A	2/3-2/24	4	\$60/70
C	18+	F	9:00-10:00A	3/3-3/24	4	\$60/70

## Kenpo Kung Fu 121010

Join us for fun and functional self-defense. Our class is designed to improve focus, awareness and confidence. Students will gain balance, coordination, flexibility and strength. We use educational drills and activities to teach that staying alert will keep one safe. Traditional weapons will be covered beginning with the padded nun chucks. Our program is traditional martial arts based and ongoing. All participants begin as white belts and have the opportunity to progress to black belt. No Class on 2/15.



**Instructor: Cesar Garcia | Location: ECC Activity Room B**

CL #	Ages	Day/s	Time	Date	Wks	Fee*
A	6-9	M,W	5:15-6:05P	1/2-1/30	5	\$58/68
B	6-9	M,W	5:15-6:05P	2/1-2/27	4	\$58/68
C	6-9	M,W	5:15-6:05P	3/1-3/29	5	\$58/68
D	6-9	M,W	6:10-7:00P	1/2-1/30	5	\$58/68
E	6-9	M,W	6:10-7:00P	2/1-2/27	4	\$58/68
F	6-9	M,W	6:10-7:00P	3/1-3/29	5	\$58/68
G	10-60	M,W	7:05-8:00P	1/2-1/30	5	\$58/68
H	10-60	M,W	7:05-8:00P	2/1-2/27	4	\$58/68
I	10-60	M,W	7:05-8:00P	3/1-3/29	5	\$58/68

## Gymnastics 111006

Students learn acrobatic techniques, forward and backwards rolls, cartwheels, jumps, head and handstands, backbends, bridge, etc. A fun and challenging class incorporated with various strengthening exercises. Activities include, beam and mats. Great for boys and girls!

**Instructor: Llorena Talley | Location: ECC Stage**

CL #	Ages	Day/s	Time	Date	Wks	Fee*
A	2-3	M	5:00-5:45P	1/9-2/20	7	\$79/89
A2	2-3	M	5:00-5:45P	3/6-3/27	4	\$49/59
B	4-6	M	5:45-6:30P	1/9-2/20	7	\$79/89
B2	4-6	M	5:45-6:30P	3/6-3/27	4	\$49/59
C	7-13	M	6:30-7:15P	1/9-2/20	7	\$79/89
C2	7-13	M	6:30-7:15P	3/6-3/27	4	\$49/59
D	2-3	Th	11:15-12:00P	1/12-2/23	7	\$79/89
D2	2-3	Th	11:15-12:00P	3/9-3/30	4	\$49/59
E	4-6	Th	9:45-10:30A	1/12-2/23	7	\$79/89
E2	4-6	Th	9:45-10:30A	3/9-3/30	4	\$49/59

## Fitness Fun for Kids 114002

A fun yet active class for boys and girls to get healthy and fit through multiple activities. Structured for individual and group exercises designed to strengthen muscles, increase stamina, circulation, improve flexibility, coordination and self-esteem. Similar to an obstacle course with hula hoops, basketballs, cones, rope etc. Great for both boys and girls!

**Instructor: Llorena Talley | Location: ECC Stage**

CL #	Ages	Day/s	Time	Date	Wks	Fee*
A	5-13	F	5:00-5:45P	1/13-2/24	7	\$79/89
A2	5-13	F	5:00-5:45P	3/10-3/31	4	\$49/59

## Yoga & Tumbling 114003

Classes introduce children to basic yoga poses, combined with relaxation and breathing techniques using age-appropriate music, affirmation, and meditation. These fundamentals of yoga are introduced with the use of animal imagery. Children will benefit by building concentration, relaxation skills, coordination, self-confidence, and imagination all in positive atmosphere.

**Instructor: Darlene Hernandez | Location: ECC Music Room**

CL #	Ages	Day/s	Time	Date	Wks	Fee*
A	5-8	M	5:00-5:45P	1/2-1/30	5	\$46/56
B	5-8	M	5:00-5:45P	2/27-3/27	5	\$46/56

## Mommy & Me Stretch & Tone 114004

Want to work out but can't find a sitter? This is your solution! Take your child with you! A great class for moms, especially new moms with a newborn/infant, to get back into shape. Class consists of various exercises to increase strength, stamina, flexibility and tone muscles. In this class, kids of all ages are welcome.

**Instructor: Llorena Talley | Location: ECC Stage**

CL #	Ages	Day/s	Time	Date	Wks	Fee*
A	0+	W	9:00-9:45A	1/11-2/22	7	\$79/89
B	0+	W	9:00-9:45A	3/8-3/29	4	\$49/59

## Stretch & Tone/ Strengthen 124015

A great class for the younger dancers trying to improve their flexibility and strength to aid in becoming a better dancer or just toned.

**Instructor: Llorena Talley | Location: ECC Stage**

CL #	Ages	Day/s	Time	Date	Wks	Fee*
A	5-13	W	3:30-4:15P	1/11-2/22	7	\$79/89
A2	5-13	W	3:30-4:15P	3/8-3/29	4	\$49/59



## Stretch & Tone 124014

Stretch and Tone Class is specifically designed for those either wishing to start to begin with a "softer" workout program or those wishing to remain at a gentle, non-competitive, generally slow-paced exercise class practice, this class will focus on the key elements of breath control with movement, core alignment, balance, and relaxation.

**Instructor: Darlene Hernandez | Location: ECC Stage**

CL #	Ages	Day/s	Time	Date	Wks	Fee*
A	16-45	Tu	10:00-11:00A	1/3-1/31	5	\$46/56
B	16-45	Tu	10:00-11:00A	2/7-2/28	4	\$46/56
C	16-45	Tu	10:00-11:00A	3/7-3/28	4	\$46/56



**BEST  
THIRTY  
MINUTES  
OF YOUR DAY!**

Facebook.com/NorcoFitBody  
@NorcoFitBodyBootCamp

### CHALLENGE INCLUDES:

- MULTIPLE TRAINING SESSION TIMES
- COMPLETE MEAL PLANNING & NUTRITION
- PRIVATE FACEBOOK SUPPORT GROUP
- WEEKLY BODY COMPOSITION SCANS

**NORCO FIT BODY BOOT CAMP**

**3230 HAMNER AVE. NORCO, CA 92860**

*New Year  
New You  
Challenge*

**NORCO BOOTCAMP**  
FIT BODY  
UNSTOPPABLE FITNESS FORMULA

**WWW.NORCOFITBODY.COM**

**(951)703-3913**

## Health & Fitness

### Transformation Challenge

**134009**

2017 is time for a "New Year ~ New You". Join us for a Complete Fitness Program, that will jumpstart your Health & Fitness Goals. Norco Fit Body Boot Camp is a results driven and energetic fitness & fat loss workout program that includes motivation, accountability, and dynamic resistance training. All designed to get you the body that you want in a safe, fun, and non-intimidating atmosphere. Every workout session is led by our Certified Personal Trainers and is designed to be fun and challenging, while burning maximum fat in minimum time. Proper Nutrition is a key element to a successful program. Included in your program is a Complete Meal Planning Guide. With daily meal plans, corresponding recipes, weekly shopping lists, food swap lists, and success manual. To take it a step further, we've teamed up with Eastvale Nutrishop to provide weekly Body Composition Scans to track your progress and modify your meal plan based on the results.

**Instructor: Eric Kosmal | Location: Norco Fit Body Boot Camp**

**\*Classes can be attended daily**

**\*\*Orientation: Thursday 1/5 @ 7:45 pm or Saturday 1/7 @ 10:00 am**

CL #	Ages	Day/s	Time	Date	Wks	Fee*
A	18-65	M-F*	6:30-7:05a 8:30-9:05a 5:15-5:50p 6:00-6:35p	1/9-2/6	4	\$97/107
B	18-65	M-F*	6:30-7:05a 8:30-9:05a 5:15-5:50p 6:00-6:35p	1/9-2/20	6	\$147/157

### Jazzercise

**124016**

While listening to upbeat music, kids have fun with aerobic exercises incorporated with jazz and hip hop dance in a dance fitness structure. Get fit while having fun! Class consists of stretching, dancing and various fitness activities.

**Instructor: Llorena Talley | Location: HNC Activity Rm A**

CL #	Ages	Day/s	Time	Date	Wks	Fee*
A	5-13	Th	3:30-4:15P	1/12-2/23	7	\$79/89
A2	5-13	Th	3:30-4:15P	3/9-3/30	4	\$49/59

### PiYo Live 134008

Get drenched in strength with PiYo Live high intensity, low impact body weight workout that combines the best of Pilates and yoga for a long, lean physique. Together, you'll sculpt every muscle, improve flexibility, and burn away more calories than a mind-body class. You'll unleash your inner powerhouse and leave feeling refreshed restored, and ready to conquer anything. Please Note: Shoes are optional. Please bring a yoga mat, towel, and water.

**Instructor: Tobie Silva | Location: ECC Stage**

CL #	Ages	Day/s	Time	Date	Wks	Fee*
A	12+	Th	6:30-7:30P	1/5-1/26	4	\$30/40
B	12+	Th	6:30-7:30P	2/2-2/23	4	\$30/40
C	12+	Th	6:30-7:30P	3/2-3/30	5	\$30/40

### Zumba

**124002**

Zumba is a fusion of Latin and international music with fast and slow rhythms that tone and sculpt the body. You'll have fun dancing Latin moves to rhythms such as merengue, salsa, and reggaeton, while burning calories. Come and join the dance party and see results!!!

**Instructor: Joann Gallucci | Location: ECC Stage**

CL #	Ages	Day/s	Time	Date	Wks	Fee*
A	16+	Tu	7:45-8:45P	1/10-2/14	6	\$54/64
B	16+	Tu	7:45-8:45P	2/21-3/28	6	\$54/64
C	16+	Th	7:45-8:45P	1/12-2/16	6	\$54/64
D	16+	Th	7:45-8:45P	2/23-3/30	6	\$54/64

### Cardio Dance Party

**124013**

Cardio Dance Party is a high impact, high energy dance fitness class. You will work out to all the hottest Hip Hop, Pop, and EDM music combining easy dance moves with all the best boot camp drills like burpees, tuck jumps & pushups for a workout that is so much fun, you won't realize how many calories you're burning!

**Instructor: Bernadette Villalobos | Location: ECC Stage**

CL #	Ages	Day/s	Time	Date	Wks	Fee*
A	16+	M	7:30-8:15P			
		Sa	8:30-9:15a	1/7-1/30	4	\$35/45
B	16+	M	7:30-8:15P			
		Sa	8:30-9:15a	2/4-2/27	4	\$35/45
C	16+	M	7:30-8:15P			
		Sa	8:30-9:15a	3/4-3/27	4	\$35/45

# Youth Sports

GET YOUR  
FOUR  
ON



## Youth Basketball

721002

Boys and Girls are invited to participate in a fun filled season of recreational games with training in fundamentals and techniques of basketball. Registration fee includes a reversible team jersey, picture package, and a participation award. The JCSD Youth Basketball League will be conducting a mandatory evaluation day on November 19, 2016 at the ECC Gymnasium.

**REGISTER EARLY, SPACE IS LIMITED IN EACH DIVISION!**

Evaluations	PEE-WEE : 9:00 am	Junior : 10:30 am
Division C: 12:00 am	Division D: 1:30 pm	Division E&F : 2:30 pm

**REGISTRATION CLOSES JUNE 9, 2017.**

**SEASON STARTS JULY 15, 2017**

**Location: ECC Gymnasium**

CL #	Ages	Game Day/s	Time	Date	Wks	Fee
G	5-6	Sa	8:00-6:00P	7/15-9/23	10	\$85/95
H	7-8	Sa	8:00-6:00P	7/15-9/23	10	\$85/95
I	9-10	Su	8:00-6:00P	7/15-9/23	10	\$85/95
J	11-12	Su	8:00-6:00P	7/15-9/23	10	\$85/95
K	13-15	Su	8:00-6:00P	7/15-9/23	10	\$85/95



## Youth Football

731002

ARE YOU READY FOR SOME FOOTBALL? The Jurupa Community Services District offers a Sunday Youth Flag Football League, which will begin April 9, 2017.

**REGISTER EARLY, SPACE IS LIMITED IN EACH DIVISION!**

**Location: ECP**

CL #	Ages	Game Day/s	Time	Date	Wks	Fee
A	7-8	Su	10:00-4:00P	4/9-6/11	10	\$85/95
B	9-10	Su	10:00-4:00P	4/9-6/11	10	\$85/95
C	11-12	Su	10:00-4:00P	4/9-6/11	10	\$85/95
D	13-15	Su	10:00-4:00P	4/9-6/11	10	\$85/95

## Youth Volleyball

721012

Boys and Girls ages 6 -16 are invited to participate in a fun filled season of recreational games with training in fundamentals of Volleyball. Registration fee includes team jersey, picture package, and participation award. Practices are held 1 or 2 times per week at the Eastvale Community Center (ECC). There will be a mandatory evaluation day on March 11, 2017 at the ECC Gymnasium.

Evaluations	6-8 yr olds: 4:00 pm	9-10 yr olds: 5:00 pm
11-12 yr olds: 6:00 pm	13-14 yr olds: 7:00 pm	15-16 yr olds: 7:00 pm

**REGISTRATION CLOSES MARCH 10, 2017.**

**SEASON STARTS APRIL 2017**

**Location: ECC Gymnasium**

CL #	Ages	Game Day/s	Date	Wks	Fee
A	6-8	Su	April 2017	10	\$85/\$95
B	9-10	Su	April 2017	10	\$85/\$95
C	11-12	Su	April 2017	10	\$85/\$95
D	13-14	Su	April 2017	10	\$85/\$95
E	15-16	Su	April 2017	10	\$85/\$95



# Adult Sports

## Co-ed Adult Kickball

**731004**

Gather a group of friends and play a fun school yard game. The league will consist of 10 weeks of play and one week of playoffs.

**Location:** JCHP

CL #	Ages	Day/s	Time	Date	Fee*
D	18+	F	6:30-9:30P	1/27-3/31	\$325/team

## Co-ed Adult Softball

**731005**

This fun filled recreational Co-ed Adult Softball league will be played on Sunday afternoons at Providence Ranch Park. Games will last 70 minutes or 7 full innings (whichever comes first). In addition to the cost, each team is required to pay \$10 per game to pay the umpire fee.

**Location:** PR

CL #	Ages	Day/s	Time	Date	Fee*
B	18+	Su	3:00-7:00P	1/29-4/2	\$375/team

## Adult Basketball

**731001**

JCSD offers weeknight adult basketball leagues, which will begin in February. Space is limited. Registration fee will be \$375 per team (plus a \$50 refundable forfeit fee). Teams are responsible for an additional \$25 per game for referees.

**Location:** ECC Gymnasium

CL #	Ages	Day/s	Time	Date	Fee*
J	18+	Th	6:30-10:30P	2/23-5/11	\$425/team
K	35+	Tu	6:30-10:30P	2/21-5/9	\$425/team

## Co-ed Adult Volleyball

**731013**

This Adult Co-ed Volleyball League will be played on Friday evenings at the Eastvale Community Center (ECC). Games will last 60 minutes. In addition to the cost, each team is required to pay \$15 per game to pay the referee fee.

**Location:** ECC Gymnasium

CL #	Ages	Day/s	Time	Date	Fee*
C	18+	F	7:00-10:00P	1/27-3/31	\$330/team

## Youth Sport Classes

**721008**

JCSD will be offering volleyball, football, and basketball classes to help refine and develop your skills. This is a great way to enhance your skills in a non-competitive environment.

**Location:** ECC Gymnasium

CL #	Ages	Day/s	Time	Date	Wks	Fee*
Volleyball						
C	6-8	Tu,Th	3:00-3:45P	1/3-1/26	4	\$40/50
D	9-15	M,W	3:00-4:00P	1/2-1/25	4	\$40/50
Flag Football						
J	9-15	F	4:00-5:00P	2/3-3/10	6	\$50/60
Basketball						
K	6-8	F	3:00-3:45P	1/27-3/3	6	\$50/60
L	9-14	Th	3:00-4:00P	1/26-3/2	6	\$50/60



**CORONA INLINE**

## PROGRAMS OFFERED:

Introduction to Hockey  
Learn to Skate Classes



[WWW.THE-RINKS.COM](http://WWW.THE-RINKS.COM)



@THE\_RINKS

The Rinks - Corona Inline | 4325 Prado Rd. #101 | Corona, CA 92880

## Parent & Me Creative Movement

**113003**

Exercise your child's body and mind through fun activities! Class activities include warm up, traveling movements, dancing, gymnastics, balance beam, musical instruments, learning colors, shapes, etc. Basic movements are incorporated with various skills to improve rhythm, listening and following directions. Great for boys and girls! Parent Participation required.

**Instructor: Llorena Talley | Location: ECC Stage**

CL #	Ages	Day/s	Time	Date	Wks	Fee*
A	1-3	M	4:15-5:00P	1/9-2/20	7	\$79/89
A2	1-3	M	4:15-5:00P	3/6-3/27	4	\$49/59
B	1-3	Th	10:30-11:15A	1/12-2/23	7	\$79/89
B2	1-3	Th	10:30-11:15A	3/9-3/30	4	\$49/59

## Intro to Dance/Creative Movement

**13001**

Exercise your child's body and mind through fun activities! Class activities include warm up, traveling movements, dancing, gymnastics, balance beam, musical instruments, learning colors, shapes, etc. Basic movements are incorporated with various skills to improve rhythm, listening and following directions. Great for boys and girls!

**Instructor: Llorena Talley | Location: ECC Stage**

CL #	Ages	Day/s	Time	Date	Wks	Fee*
A	2-4	Th	12:00-12:45p	1/12-2/23	7	\$79/89
A2	2-4	Th	12:00-12:45p	3/9-3/30	4	\$49/59
B	2-4	F	4:15-5:00P	1/13-2/24	7	\$79/89
B2	2-4	F	4:15-5:00P	3/10-3/31	4	\$49/59

## Lyrical/Contemporary

**123005**

A fun class with ballet, jazz, and modern techniques introduced through warm up, stretches, traveling movements, jumps, and turns. Techniques are accompanied by, and expressed through, the lyrics to a soft/meaningful song. Lyrical style is similar to a blend of ballet, modern, and jazz and is sometimes referred to as interpretive dance.

**Instructor: Llorena Talley | Location: ECC Stage**

CL #	Ages	Day/s	Time	Date	Wks	Fee*
A	5-13	W	4:15-5:00P	1/11-2/22	7	\$79/89
A2	5-13	W	4:15-5:00P	3/8-3/29	4	\$49/59

## Jazz Dance

**123010**

A fun class which dance/jazz techniques are introduced through warm up, stretches, traveling movements, jumps, kicks, and an excited routine/dance.

Gain strength, flexibility, confidence, improve musicality, coordination, and body placement. Enjoy dancing while getting fit!

**Instructor: Llorena Talley | Location: ECC Stage**

CL #	Ages	Day/s	Time	Date	Wks	Fee*
A	5-13	Tu	4:15-5:00P	1/10-2/21	7	\$79/89
A2	5-13	Tu	4:15-5:00P	3/7-3/28	4	\$49/59

## Musical Theatre

**123012**

A fun class which includes singing, dancing and acting, similar to a Broadway show.

**Instructor: Llorena Talley | Location: ECC Stage**

CL #	Ages	Day/s	Time	Date	Wks	Fee*
A	5-13	F	5:45-6:30P	1/13-2/24	7	\$79/89
A2	5-13	F	5:45-6:30P	3/10-3/31	4	\$49/59

*This is a paid advertisement*

## 2017 Spring Baseball Registration

How to complete the registration process

### Step 1:

**Online Registration** (Online sign-up is required)

1. Visit [www.eastvalelittleleague.com](http://www.eastvalelittleleague.com)
2. Complete the registration form\*
3. Complete payment online

### Step 2:

**Document Verification**

(Required for all **NEW** and **RETURNING** players)

Players must provide the following verification document:

1. Players birth certificate
2. Three forms of proof of residency

**Option #1**

Email OR Fax to: [info@ellmail.com](mailto:info@ellmail.com) • 1.888.746.5630

**Option #2**

Bring verification documents to Harada Park on one of these dates:

**January 7th, January 14th, or January 21th**

\*Incomplete registrations will not be included in team placement

\*\*all players AAA and above must attend one evaluation, January 14th or 21st(Times TBA)

## Early Bird Registration

Sign-up Dates:

**October 30th - November 30th**  
and receive \$10 off your registration fee!

**LATE FEES** will be apply to all  
sign-ups after:

**December 31<sup>st</sup>, 2016**

Sign-up Dates:

T-Ball, Rookie, Single A & AA... **\$110**

Non competitive divisions

\*\*AAA, Majors, 50/70, Juniors, and Seniors **\$140**

Family cap available please see web site for details



**Follow Eastvale Little League on FaceBook and Twitter**  
for the latest updates, registration news, and field conditions



## Jazz & Tap

113012

The first half of class is an exciting Jazz class style with Jumps, turns and leaps. The second half is rhythmic Tap dance, creating music with our feet!

**Instructor: Llorena Talley | Location: ECC Stage**

CL #	Ages	Day/s	Time	Date	Wks	Fee*
A	3-6	F	3:30-4:15P	1/13-2/24	7	\$79/89
A2	3-6	F	3:30-4:15P	3/10-3/31	4	\$49/59
B	3-6	W	11:15-12:00P	1/11-2/22	7	\$79/89
B2	3-6	W	11:15-12:00P	3/8-3/29	4	\$49/59

## Hip Hop & Jazz

113013

First half of class is a fun, up beat hip hop class with the latest pop music. The second half is an exciting Jazz class with jumps, turns, and leaps!

**Instructor: Llorena Talley | Location: ECC Stage**

CL #	Ages	Day/s	Time	Date	Wks	Fee*
A	3-6	M	12:45-1:30P	1/9-2/20	7	\$79/89
A2	3-6	M	12:45-1:30P	3/6-3/27	4	\$49/59
HNC Activity Rm A						
B	3-6	Th	6:30-7:15P	1/12-2/23	7	\$79/89
B2	3-6	Th	6:30-7:15P	3/9-3/30	4	\$49/59

## Weekend Jazz/Hip Hop

113010

Classes introduce the fundamentals of jazz and hip hop. This class will build on basic jazz and hip-hop skills using individual instruction, across the floor techniques, and choreographed routines. All music selections are age-appropriate. This class develops body awareness, concentration, coordination, and self-confidence.

**Instructor: Darlene Hernandez | Location: ECC Stage**

CL #	Ages	Day/s	Time	Date	Wks	Fee*
A	4-8	Sa	11:00-11:45A	1/7-1/28	4	\$46/56
B	4-8	Sa	11:00-11:45A	2/4-2/25	4	\$46/56
C	4-8	Sa	11:00-11:45A	3/4-3/25	4	\$46/56



## Hip Hop

113005

Love to Dance? A fun, high energy class for everyone! Learn the latest hip dance styles accompanied by R&B, pop, rap oriented music. Look like your favorite artist in their latest music video. Gain confidence, coordination, musicality, and a sense of personal style through self-expression. Class consists of warm up/stretching, travelling movements and a routine/dance. Great for both boys and girls!

**Instructor: Llorena Talley | Location: ECC Stage**

CL #	Ages	Day/s	Time	Date	Wks	Fee*
A	3-6	Tu	5:45-6:30P	1/10-2/21	7	\$79/89
A2	3-6	Tu	5:45-6:30P	3/7-3/28	4	\$49/59
B	7-13	Tu	6:30-7:15P	1/10-2/21	7	\$79/89
B2	7-13	Tu	6:30-7:15P	3/7-3/28	4	\$49/59

This is a paid advertisement



**Andrea Hove**  
951.235.0201

ONE REALTYONEGROUP  
HOWES • LIVES • DREAMS™

**Eastvale Specialist**  
Get your NO obligation Free Market Analysis  
on your home today.

**www.homesineastvale.com**

## Hip Hop & Tap

113014

First half of class is a fun, up beat hip hop class with the latest pop music. The second half is an rhythmic tap dance, creating music with your feet!

**Instructor: Llorena Talley | Location: ECC Stage**

CL #	Ages	Day/s	Time	Date	Wks	Fee*
A	2-3	Tu	5:00-5:45P	1/10-2/21	7	\$79/89
A2	2-3	Tu	5:00-5:45P	3/7-3/28	4	\$49/59
B	3-6	Th	9:00-9:45A	1/12-2/23	7	\$79/89
B2	3-6	Th	9:00-9:45A	3/9-3/30	4	\$49/59

## Tap Dance

123002

A fun class for boys and girls to make music and rhythms with their feet! Class includes warm up, traveling movements, and a dance. Promotes coordination, confidence, balance, and increases stamina while having fun!

**Instructor: Llorena Talley | Location: HNC Activity Rm A**

CL #	Ages	Day/s	Time	Date	Wks	Fee*
A	5-13	Th	7:15-8:00P	1/12-2/23	7	\$79/89
A2	5-13	Th	7:15-8:00P	3/9-3/30	4	\$49/59

## Ballet

113002

Ballet technique is taught through the use of barre work, stretching, body-placement and center floor. Terminology and history will be introduced. This class instills discipline, self-esteem and coordination while having fun!

**Instructor: Llorena Talley | Location: ECC Stage**

CL #	Ages	Day/s	Time	Date	Wks	Fee*
A	2-3	W	9:45-10:30A	1/11-2/22	7	\$79/89
A2	2-3	W	9:45-10:30A	3/8-3/29	4	\$49/59
B	4-6	W	10:30-11:15A	1/11-2/22	7	\$79/89
B2	4-6	W	10:30-11:15A	3/8-3/29	4	\$49/59
C	2-3	W	5:45-6:30P	1/11-2/22	7	\$79/89
C2	2-3	W	5:45-6:30P	3/8-3/29	4	\$49/59
D	4-6	W	6:30-7:15P	1/11-2/22	7	\$79/89
D2	4-6	W	6:30-7:15P	3/8-3/29	4	\$49/59
E	7-13	W	7:15-8:00P	1/11-2/22	7	\$79/89
E2	7-13	W	7:15-8:00P	3/8-3/29	4	\$49/59



# Complete Your Continuing Education Hours **ONLINE**

**Are you looking to meet your continuing education requirements or just love to learn?**

**Learn from the comfort of home!**

Our instructor-led online courses are informative, fun, convenient, and highly interactive. We focus on creating warm, supportive communities for our learners. New course sessions begin monthly. Visit our website to view start dates for the courses that interest you.

- 24-Hour Access
- Discussion Areas
- 6 Week Format

**Below are just a few of our most popular continuing education courses from our library of over 50!**



#### **Enhancing Language Development in Childhood**

Enrich the lives of your children by helping them become proficient speakers and thinkers.



#### **Teaching Students With Autism: Strategies for Success**

Help students with high-functioning autism and Asperger's Syndrome unlock their potential.



#### **Differentiated Instruction in the Classroom**

Improve your ability to teach diverse learners with real-world examples from the classrooms.



#### **Spanish in the Classroom**

Learn the essential Spanish to communicate with your Spanish-speaking students and parents.

**– PRICES START AT \$99 –**

## Over 50 Continuing Education Certified Online Courses Available!

**Enroll Now!**

**ed2go.com/jcsdparks**  
**(951) 727-3524**



These continuing education courses are state approved

JURUPA COMMUNITY SERVICES DISTRICT  
CORDIALLY INVITES YOU TO ATTEND A

# Bridal Expo

SATURDAY, APRIL 1  
11 AM-3 PM

EASTVALE COMMUNITY CENTER  
13820 SCHLEISMAN ROAD  
EASTVALE, CA



GREAT DEALS, DISCOUNTS, AND OPTIONS WILL BE  
AVAILABLE TO SUIT A VARIETY OF BUDGETS AND STYLES!  
ALL PARTICIPANTS WILL RECEIVE A FREE BRIDAL EXPO  
BAG AND BE ENTERED INTO OUR RAFFLE PRIZE DRAWING!

## FEATURING

- FASHION SHOW
- PHOTOGRAPHERS
- CATERERS/BAKERIES
- DJ'S & MUSICIANS
- WEDDING PLANNERS
- WEDDING PLANNING SEMINAR
- FLORISTS
- RECEPTION VENUES
- PHOTO BOOTHS

ADMISSION  
\$5/PERSON

IF REGISTERED BY MARCH 30

DAY OF EVENT  
\$10

REGISTRATION:  
ACTIVITY# 634002

FOR MORE INFORMATION CALL (951) 727-3524 OR VISIT OUR WEBSITE, [WWW.JCSD.US](http://WWW.JCSD.US)



@JCSDPARKS

## Ballet & Tap

A fun class to introduce your little dancer the ballet and tap basics, first half is ballet, consists of stretching, traveling and ballet techniques. The second half of the class is music making, rhythmic tap dance, instills grace, coordination, listening and following direction skills, gain strength and flexibility. No Class on 1/1

**Instructor: Llorena Talley | Location: ECC Stage**

**113006**



CL #	Ages	Day/s	Time	Date	Wks	Fee*
A	2-3	M	11:15-12:00P	1/9-2/20	7	\$79/89
A2	2-3	M	11:15-12:00P	3/6-3/27	4	\$49/59
B	4-6	M	12:00-12:45P	1/9-2/20	7	\$79/89
B2	4-6	M	12:00-12:45P	3/6-3/27	4	\$49/59
HNC Activity Rm A:						
C	2-3	Th	5:00-5:45P	1/12-2/23	7	\$79/89
C2	2-3	Th	5:00-5:45P	3/9-3/30	4	\$49/59
D	4-6	Th	5:45-6:30P	1/12-2/23	7	\$79/89
D2	4-6	Th	5:45-6:30P	3/9-3/30	4	\$49/59
E	7-13	Th	4:15-5:00P	1/12-2/23	7	\$79/89
E2	7-13	Th	4:15-5:00P	3/9-3/30	4	\$49/59

## Weekend Ballet/Tap

**113009**

Classes begin with warm up and stretching exercises. Children are then taught creative movement and dance techniques across the floor. They are introduced to beginning ballet and tap techniques. They will dance to their favorite songs while having fun!

**Instructor: Darlene Hernandez | Location: ECC Stage**

CL #	Ages	Day/s	Time	Date	Wks	Fee*
A	3-5	Sa	9:30-10:15A	1/7-1/28	4	\$46/56
B	3-5	Sa	9:30-10:15A	2/4-2/25	4	\$46/56
C	3-5	Sa	9:30-10:15A	3/4-3/25	4	\$46/56
D	6-10	Sa	10:15-11:00A	1/7-1/28	4	\$46/56
E	6-10	Sa	10:15-11:00A	2/4-2/25	4	\$46/56
F	6-10	Sa	10:15-11:00A	3/4-3/25	4	\$46/56

## Mommy & Me Ballet

**113011**

A fun class, which both mom and child participate in ballet class together. Stretch, tone, and bond while having fun together!

**Instructor: Llorena Talley | Location: ECC Stage**

CL #	Ages	Day/s	Time	Date	Wks	Fee*
vA	1.5-5	M	10:30-11:15A	1/9-2/20	7	\$79/89
B	1.5-5	M	10:30-11:15A	3/6-3/27	4	\$49/59
C	1.5-5	W	5:00-5:45P	1/11-2/22	7	\$79/89
D	1.5-5	W	5:00-5:45P	3/8-3/29	4	\$49/59

## Bollywood Dance

**123003**

Bollywood Dance Class: In this Beginner level class, students will learn concepts of Bollywood dancing and a high energy ready to perform Bollywood Dance routine. This class is designed with emphasis on developing the child's ability to learn choreography and execute it with precision and a fun filled process.

**Instructor: Nahid Khan | Location: HNC Activity Rm A**

CL #	Ages	Day/s	Time	Date	Wks	Fee*
A	5-15	M	5:00-6:00P	1/9-1/30	4	\$55/65
B	5-15	M	5:00-6:00P	2/6-2/27	4	\$55/65
C	5-15	M	5:00-6:00P	3/6-3/27	4	\$55/65

## Polynesian Dance

**123014**

Aloha! Come & learn the beautiful & exciting art of Polynesian dancing. Our class teaches the hawaiian hula, tahitian dancing, maori poi, and more!

**Instructor: Alia Clark | Location: HHP Neighborhood Center**

CL #	Ages	Day/s	Time	Date	Wks	Fee*
Beginner:						
A	4-7	Sa	10:00-11:00A	2/4-2/25	4	\$30/40
A2	4-7	Sa	10:00-11:00A	3/4-3/25	4	\$30/40
Intermediate:						
B	8-11	Sa	9:00-10:00A	2/4-2/25	4	\$30/40
B2	8-11	Sa	9:00-10:00A	3/4-3/25	4	\$30/40
C	12-17	Sa	11:00-12:00P	2/4-2/25	4	\$30/40
C2	12-17	Sa	11:00-12:00P	3/4-3/25	4	\$30/40



## Adult Tap

**123013**

Tap is a style involving rhythm, dynamics, and varying sounds. Tappers will have a graduated warm-up to loosen their ankles and knees for proper execution of skills, across the floor progressions and have center floor work to learn and perfect new skills.

**Instructor: Darlene Hernandez | Location: ECC Stage**

CL #	Ages	Day/s	Time	Date	Wks	Fee*
A	14-55	Sa	11:45-12:45P	1/7-1/28	4	\$44/54
B	14-55	Sa	11:45-12:45P	2/4-2/25	4	\$44/54
C	14-55	Sa	11:45-12:45P	3/4-3/25	4	\$44/54

## Line Dance

**133001**

Students will explore beginner/ high beginner level line dances that are performed to Motown, R&B, Gospel, Salsa, Jazz and Country music throughout the nation at family reunions, wedding receptions, retirement parties and the "Club". No partner is needed for this low impact exercise for the mind and body.

**Instructor: Heart & Soul Line Dance | Location: HNC Activity Rm A**

CL #	Ages	Day/s	Time	Date	Wks	Fee*
A	18+	Tu	5:30-7:00P	1/3-1/31	1	\$0/10
B	18+	Tu	5:30-7:00P	1/10-1/31	4	\$28/38
C	18+	Tu	5:30-7:00P	2/7-2/28	4	\$28/38
D	18+	Tu	5:30-7:00P	3/7-3/28	4	\$28/38



**REGISTRATION OPENS**

**December 19, 2016**

in person or online at:  
*parks.jcsd.us*

## Guitar/Bass

112001

Ever dream of playing an instrument? Learn to play guitar/bass like your favorite Rockstar! Now you can learn to play by Eastvale's original most effective music program. Like the hundreds of people in the program now, this is the most fun you'll have learning to Rock!!! No experience or equipment necessary.

**Instructor: Rockstars of Tomorrow | Location: ECC Music Room**

CL #	Ages	Day/s	Time	Date	Wks	Fee*
A	4+	Tu	6:30-7:15P	1/10-1/31	4	\$80/90
B	4+	Tu	6:30-7:15P	2/7-2/28	4	\$80/90
C	4+	Tu	6:30-7:15P	3/7-3/28	4	\$80/90

Rockstars of Tomorrow Norco Studio:

D	4+	Sa	12:00-12:45P	1/7-1/28	4	\$80/90
E	4+	Sa	12:00-12:45P	2/4-2/25	4	\$80/90
F	4+	Sa	12:00-12:45P	3/4-3/25	4	\$80/90

## Drums

112002

Ever dream of playing an instrument? Learn to play drums like your favorite Rockstar! Now you can learn to play by Eastvale's original most effective music program. No experience necessary. Like the hundreds of people in the program now, this is the most fun you'll have learning to Rock!!! Drum students will be asked to purchase a pair of sticks and small practice pad

**Instructor: Rockstars of Tomorrow | Location: Rockstars- Norco Studio**

CL #	Ages	Day/s	Time	Date	Wks	Fee*
A	4+	Su	1:00-1:45P	1/8-1/29	4	\$80/90
B	4+	Su	1:00-1:45P	2/5-2/26	4	\$80/90
C	4+	Su	1:00-1:45P	3/5-3/26	4	\$80/90



## Voice

112003

Ever dream of singing? Learn to sing like your favorite Rockstar! No experience or equipment necessary. Now you can learn to play by Eastvale's original most effective music program! Like the hundreds of people in the program now, this is the most fun you'll have learning to Rock!!! No Class on 2/26

**Instructor Rockstars of Tomorrow | Location: ECC Music Room**

CL #	Ages	Day/s	Time	Date	Wks	Fee*
A	4+	Th	6:00-6:45P	1/5-1/26	4	\$80/90
B	4+	Th	6:00-6:45P	2/2-2/23	4	\$80/90
C	4+	Th	6:00-6:45P	3/9-3/30	4	\$80/90

Rockstars of Tomorrow Norco Studio:

D	4+	Sa	12:00-12:45P	1/7-1/28	4	\$80/90
E	4+	Sa	12:00-12:45P	2/4-2/25	4	\$80/90
F	4+	Sa	12:00-12:45P	3/4-3/25	4	\$80/90

# Season's Greetings

Check your home value for FREE at  
[www.EastvaleEquityUpdate.com](http://www.EastvaleEquityUpdate.com)



# Rojas

REAL ESTATE TEAM

Tatiana Rojas  
Diana Rojas  
REALTOR/BROKER  
951.268.4208

LIC:01785190



REALTYONEGROUP

*This is a paid advertisement*

## MusicStar Kidz

112004

Music is a powerful tool in the development of the whole child, by way of targeted, fun, and disguised learning activities. These are specifically designed to improve mind and body coordination and skills. All the while children and their parents will enjoy an action packed and fun filled session immersed in music, singing, & dance. Please note: There is a \$20 material fee due at the first class meeting. Parent participation required.

**Instructor: Mike Boone | Location: ECC Music Room**

CL #	Ages	Day/s	Time	Date	Wks	Fee*
A	.5-3	W	9:00-9:45A	1/4-1/25	4	\$39/49
B	.5-3	W	9:00-9:45A	2/1-2/22	4	\$39/49
C	.5-3	W	9:00-9:45A	3/1-3/22	4	\$39/49

## Baton Twirling

121009

Baton twirling is a great sport for the youth of today. Participants will develop their motor skills and learn discipline, self-confidence, and teamwork. We march in parades and do special performances. It's fun!

**Instructor: Ellen Gailing | Location: ECC Stage**

CL #	Ages	Day/s	Time	Date	Wks	Fee*
A	7-15	Th	5:00-6:00P	1/5-1/26	4	\$28/38
B	7-15	Th	5:00-6:00P	2/2-2/23	4	\$28/38
C	7-15	Th	5:00-6:00P	3/2-3/30	5	\$35/45

## Beginning Keyboard

122001

Learn to play the piano/ keyboard in these fun filled classes. Begin with no previous knowledge of music. Learn to read and play music and understand basic concepts of music theory. Keyboards are provided for classroom use. Please Note: There is a \$20 material fee due at the first class meeting. Instruments will be provided.

**Instructor: Mike Boone | Location: ECC Music Room**

CL #	Ages	Day/s	Time	Date	Wks	Fee*
A	8+	W	5:00-5:50P	1/11-2/15	6	\$66/76
B	8+	W	5:00-5:50P	2/22-3/29	6	\$66/76

## Sparkle, Shine, & Glitter

**115005**

Let your inner artist shine and create art that wows! In this multidisciplinary, tactile adventure children will explore a variety of media and techniques to make projects that glimmer and glow. Inspired by science and art, they will experiment with borax crystals, faux stained glass, lanterns (and more!) and different geometric shapes to capture and reflect light through their sassy designs. Budding artists will enjoy a pinch of sneaky learning and a lot of glitter. Please Note: \$10 material fee

**Instructor: Edna Martinez | Location: ECC Art Room**

CL #	Ages	Day/s	Time	Date	Wks	Fee*
A	3-5	Th	4:00-4:45P	1/5-1/19	4	\$30/40

## Parent & Me Art

**115006**

Parents and kids can learn a variety of art such as make and take play-doh, finger puppets, art projects for art appreciation, learning development, and creative fun! Please Note: There is a \$10 material fee due at the first class meeting. There is a \$10 material fee due at the first class meeting.

**Instructor: Roslyn Dillard | Location: ECC Art Room**

CL #	Ages	Day/s	Time	Date	Wks	Fee*
A	Adult	Tu	10:00-10:50A	1/3-1/24	4	\$40/50
B	3.5-9	Tu	10:00-10:50A	1/31-2/21	4	\$40/50
C	3.5-9	Tu	10:00-10:50A	3/7-3/28	4	\$40/50

## Paint, Paste, & Pour

**115012**

In this class children will get messy with paint, glue and various other sticky materials as they make cool holiday crafts and projects to take home. Please Note: There is a mandatory \$15 material fee due at the first class meeting. Dress for a mess. No parent participation required.

**Instructor: Edna Martinez | Location: ECC Art Room**

CL #	Ages	Day/s	Time	Date	Wks	Fee*
A	3-6	Th	4:00-4:45P	2/2-2/23	4	\$39/49

## Grandparent & Me Color

**115007**

Grandparents and kids can learn a variety of art such as make and take play-doh, finger puppets, art projects for art appreciation, learning development, and creative fun. There will be a \$10 material fee due at the first class meeting.

**Instructor: Roslyn Dillard | Location: ECC Art Room**

CL #	Ages	Day/s	Time	Date	Wks	Fee*
A	3.5-9	Tu	11:00-11:50A	1/3-1/24	4	\$40/50
B	3.5-9	Tu	11:00-11:50A	1/31-2/21	4	\$40/50
C	3.5-9	Tu	11:00-11:50A	3/7-3/28	4	\$40/50

## Grandparent & Me Clay

**115008**

This class will present the opportunity for grandparents and kids to work with self-drying clays to develop, build and paint colorful clay projects using slab and other methods. This class is great for beginners as well as the seasoned artist. Special needs welcome. Parent participation may be required. There will be a \$10 material fee due at the first class meeting. No Class on 1/1

**Instructor: Roslyn Dillard | Location: ECC Art Room**

CL #	Ages	Day/s	Time	Date	Wks	Fee*
A	3.5-9	Tu	12:00-12:50P	1/3-1/24	4	\$40/50
B	3.5-9	Tu	12:00-12:50P	1/31-2/21	4	\$40/50
C	3.5-9	Tu	12:00-12:50P	3/7-3/28	4	\$40/50



# REGISTRATION OPENS

## December 19, 2016

in person or online at:  
*parks.jcsd.us*

## Special Needs Art

**115010**

Everyone has the ability to express themselves. In this class we will explore things like drawing, painting, clay and other materials. If you have someone in your life with Special needs bring them to this class. We'll be able to make fun art! It would also be a great place to make friends and connections with others. This is a class where participation from all members is welcome.

**Instructor: Jonathan Dillard | Location: ECC Art Room**

CL #	Ages	Day/s	Time	Date	Wks	Fee*
A	4.5-14	M	4:00-4:50P	1/2-1/23	4	\$40/50
B	4.5-14	M	4:00-4:50P	1/30-2/20	4	\$40/50
C	4.5-14	M	4:00-4:50P	3/6-3/27	4	\$40/50
D	15+	M	12:30-1:20P	1/2-1/23	4	\$40/50
E	15+	M	12:30-1:20P	1/30-2/20	4	\$40/50
F	15+	M	12:30-1:20P	3/6-3/27	4	\$40/50

## Botanical

**115011**

Cultivate the artist in your child/ children using natural and organic materials. Help you little eons learn that getting messy can be fun. Children will create gardening projects they can be proud of. Please Note: There is a mandatory \$15-\$20 (based on project) material fee due at the first class meeting.

**Instructor: Roslyn Dillard | Location: ECC Art Room**

CL #	Ages	Day/s	Time	Date	Wks	Fee*
A	4-9	Tu	8:30-9:30A	1/10-1/31	4	\$39/49
B	4-9	Tu	8:30-9:30A	2/7-2/28	4	\$39/49
C	4-9	Tu	8:30-9:30A	3/7-3/28	4	\$39/49
D	4-9	Sa	8:30-9:30A	1/7-1/28	4	\$39/49
E	4-9	Sa	8:30-9:30A	2/4-2/25	4	\$39/49
F	4-9	Sa	8:30-9:30A	3/4-3/25	4	\$39/49

## Cartooning

**125001**

Learn the secrets of cartoon drawing and create your very own cartoon story in this unique arts class. Students will learn to draw cartoon characters and other elements and will create their own story ideas and turn them into actual cartoons!

**Instructor: Jonathan Dillard | Location: ECC Art Room**

CL #	Ages	Day/s	Time	Date	Wks	Fee*
A	4.5-13	W	3:00-3:50P	1/4-1/25	4	\$40/50
B	4.5-13	W	3:00-3:50P	2/1-2/22	4	\$40/50
C	4.5-13	W	3:00-3:50P	3/8-3/29	4	\$40/50

## Model Treehouse Architecture

**125011**

In this class you will develop your ideas, plans and drawings for your fantasy treehouse. We will take inspiration from fabulous treehouse architecture and other interesting architecture from around the world. You will be able to complete a small model treehouse in great detail. Focus on both the exterior and interior. Treehouses can be space age and futuristic, or more like a house for a garden fairy. What features will your treehouse have? Perhaps

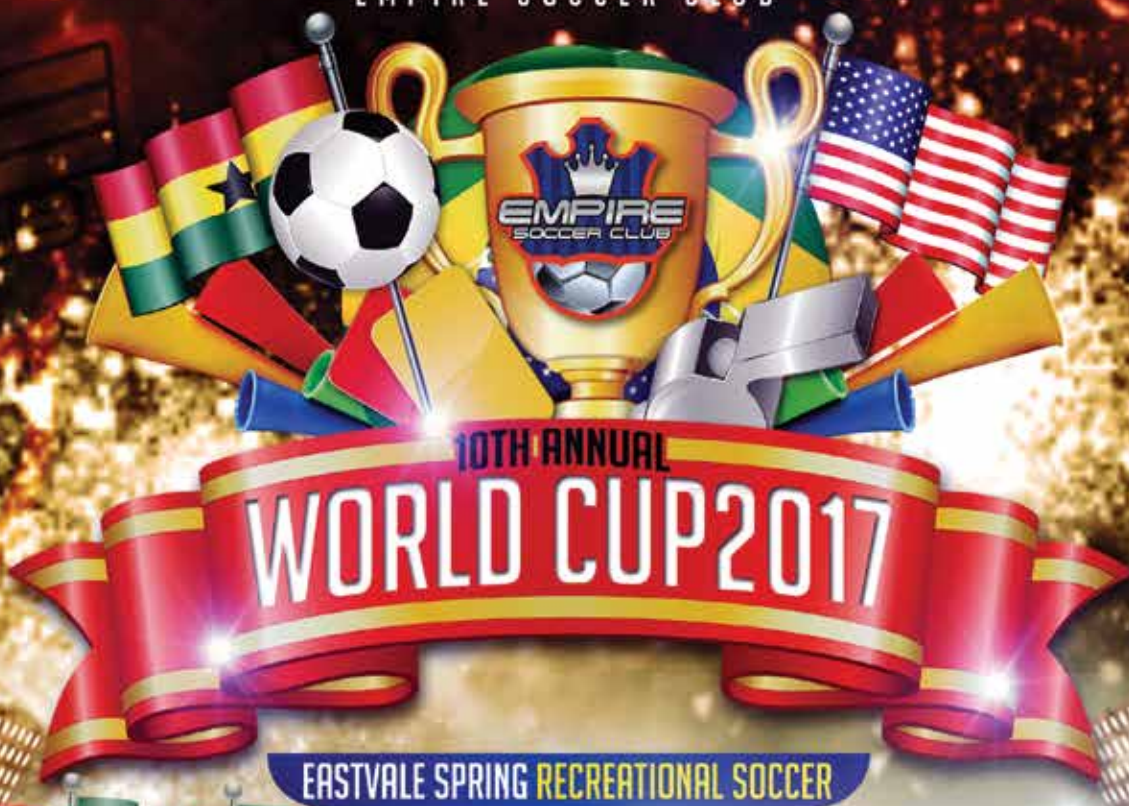


you'll design a moat, a swing, stained glass windows, an elevator, a moon roof? Your imagination can go wild in this terrific hands-on class. There is a \$15 material fee due at the first class meeting.

**Instructor: Jonathan Dillard | Location: ECC Art Room**

CL #	Ages	Day/s	Time	Date	Wks	Fee*
A	5-16	Tu	2:00-2:50P	1/3-1/24	4	\$40/50
B	5-16	Tu	2:00-2:50P	1/31-2/21	4	\$40/50
C	5-16	Tu	2:00-2:50P	3/7-3/28	4	\$40/50

EMPIRE SOCCER CLUB



EASTVALE SPRING RECREATIONAL SOCCER

**EMPIRE SOCCER CLUB IS BACK FOR ANOTHER FUN AND EXCITING SEASON  
OF EASTVALE YOUTH SOCCER!**

Online Registrations Open October 31st 2016

Early Registration Dates: Fees \$90.00 On-Line & \$95 Walk Up  
(Non Residents an additional \$10)

Walk Up Registering Dates  
Eastvale Community Park ( 12750 Citrus St. Eastvale , CA 92880 )  
Saturday Nov 5th 2016 9 am - 2 pm

Poninos Pizza (Ralphs Shopping Center)  
12768 Limonite Ave. Eastvale, CA 92880  
Saturday Nov 19th 9am-2pm  
Sunday Dec 3rd 9am-2pm

This will be the last day of Early Registration

Late Registration Dates: Fees \$ 100.00 On-Line & \$ 105 Walk Up  
(Non Eastvale Residents an additional \$10)

Poninos Pizza (Ralphs Shopping Center)  
12768 Limonite Ave. Eastvale, CA 92880  
Saturday Dec 17th 2016 9am - 2 pm  
Sunday Dec 18th 2016 9am- 2pm  
Saturday Jan 7th 2017 9am- 2pm  
Sunday Jan 8th 2017 9am- 2pm

Any Registrations after Jan 8th 2017 will be \$ 115 spaces will be limited  
(Non Eastvale Residents an additional \$10)

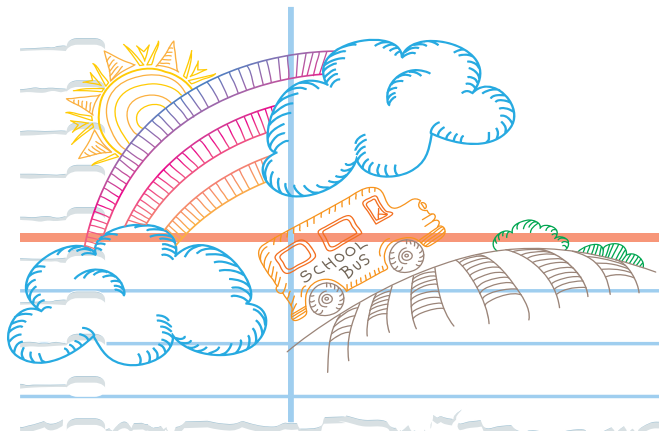
- Free Registrations for Volunteer Referees  
(Spaces limited, details at Registration)
- Volunteer Coaches save \$15.00
- New Players-Bring copy of Birth Certif. to Registrations
- Bring proof of ID & Home Bill for proof of residence
- Ages 4 thru 18

**NO Online  
Registration  
Fees**

Registration Includes:  
**Uniforms - Pictures  
Trophies or Medals  
No Fundrasing  
No Referee Duties**

For Information on Empire Club  
Tryouts please email us at:  
[empiresoccerclub@yahoo.com](mailto:empiresoccerclub@yahoo.com)

Sign Up Today! Call or Log On To: **951.817.5639 - [www.EmpireSoccerClub.org](http://www.EmpireSoccerClub.org)**



# Child



## Baby Signing Time

116003

Have fun bonding with your child while you both learn American Sign Language (ASL). Each class combines music, movement, games, and ASL to help your child communicate with you while reducing frustrations and tantrums. Children and parents of all abilities and hearing levels are welcome! *Please note there is a mandatory \$5 material fee due to the instructor at the first class meeting.*

**Instructor: Anna Larson Kernes | Location: HNC**

CL #	Ages	Day/s	Time	Date	Wks	Fee*
A	0-2	Tu	9:30-10:15A	1/10-1/31	4	\$50/60
B	0-2	Tu	9:30-10:15A	2/7-2/28	4	\$50/60
C	0-2	Tu	9:30-10:15A	3/7-3/28	4	\$50/60
D	0-2	F	9:30-10:15A	1/6-1/27	4	\$50/60
E	0-2	F	9:30-10:15A	2/3-2/24	4	\$50/60
F	0-2	F	9:30-10:15A	3/3-3/24	4	\$50/60
G	0-2	F	10:30-11:15A	1/6-1/27	4	\$50/60
H	0-2	F	10:30-11:15A	2/3-2/24	4	\$50/60
I	0-2	F	10:30-11:15A	3/3-3/24	4	\$50/60

A

## Reading Solutions

Individualized to your student's needs. Specially trained teachers test, structure, and implement your child's program. Interactive audio lessons, skill cards, worksheets, and short stories assist the student along the path of reading mastery.

**Instructor: Read Write | Location: ECC Activity Room**

### Grade K-1

126001

CL #	Ages	Day/s	Time	Date	Wks	Fee*
A	4.5-6.5	Tu,Th	3:30-4:15P	1/10-1/26	3	\$79/89
B	4.5-6.5	Tu,Th	3:30-4:15P	2/7-2/23	3	\$79/89
C	4.5-6.5	Tu,Th	3:30-4:15P	3/7-3/23	3	\$79/89

### Grade 2-6

126002

CL #	Ages	Day/s	Time	Date	Wks	Fee*
A	6.5-11	Tu,Th	4:20-5:05P	1/10-1/26	3	\$79/89
B	6.5-11	Tu,Th	4:20-5:05P	2/7-2/23	3	\$79/89
C	6.5-11	Tu,Th	4:20-5:05P	3/7-3/23	3	\$79/89

## Reading & Math for Pre-K

116001

Get ready for Kindergarten! This Sound-Start Program incorporates phonics, individualized leveled reading, math and spelling instruction specifically designed for preschoolers. Parent participation is required. No class on 11/24.

**Instructor: Read Write | Location: ECC Activity Room**

CL #	Ages	Day/s	Time	Date	Wks	Fee*
A	3.5-5	Tu,Th	2:40-3:25P	1/10-1/26	3	\$79/89
B	3.5-5	Tu,Th	2:40-3:25P	2/7-2/23	3	\$79/89
C	3.5-5	Tu,Th	2:40-3:25P	3/7-3/23	3	\$79/89

## Math Solutions

126002

This class identifies skill gaps. Reinforces primary facts (addition, subtraction, multiplication, and division), fraction operations, prime numbers, factoring concepts, decimals, algebra, geometry skills, and increased confidence.

**Instructor: Read Write | Location: ECC Activity Room**

CL #	Ages	Day/s	Time	Date	Wks	Fee*
A	6.5-11	Tu,Th	5:10-5:55P	1/10-1/26	3	\$79/89
B	6.5-11	Tu,Th	5:10-5:55P	2/7-2/23	3	\$79/89
C	6.5-11	Tu,Th	5:10-5:55P	3/7-3/23	3	\$79/89

B

## STEAM-S

116004

"Pre-School STEAM-S" propels your child full steam ahead toward Kindergarten by combining Science, Technology, Engineering, Art and Math with Sign Language to help your child grasp concepts in a new and unique way! Your child's classroom will utilize the Rachel and Treeshoolers curriculum. Parent participation is encouraged. Children and parents of all ability and hearing levels are welcome. Please note: There is a \$15 material fee due on the first class. Parent participation required. No Class 11/22, 11/25

**Instructor: Anna Larson Kernes | Location: HNC**

CL #	Ages	Day/s	Time	Date	Wks	Fee*
A	3-5.5	Tu	10:30-11:15A	1/10-1/31	4	\$50/60
B	3-5.5	Tu	10:30-11:15A	2/7-2/28	4	\$50/60
C	3-5.5	Tu	10:30-11:15A	3/7-3/28	4	\$50/60

## Little Giggles

116013

Is your child not a morning person? Now we have evening fun, preschool education. This class is taught by a credentialed teacher with multidisciplinary New and Improved Curriculum for the 2016-2017 school year. Class will engage children in appropriate activities, while gaining an understanding of science, math, art, crafts, and the alphabet, through play, music and hands-on activities in a fun, nurturing environment. This is an ongoing program. A \$25 material fee is due to the instructor on the first day. Children must be fully potty trained. No Class on 10 27-28, 11/23-25

**Instructor: Edna Martinez | Location: HNC**

CL #	Ages	Day/s	Time	Date	Wks	Fee*
A	4-5	M,W,F	4:15-6:10P	1/2-1/27	4	\$125/135
B	4-5	M,W,F	4:15-6:10P	2/1-2/27	4	\$125/135
C	4-5	M,W,F	4:15-6:10P	3/6-3/31	4	\$125/135

**Register Today!**

Parks  
Make  
Life  
Better!

# Development Classes

## Tiny Tots

This is a fun way to introduce young children to the schedules and structure of a classroom. This class is designed to promote early socialization skills, provide opportunity to discuss early childhood issues and inspire creativity. We will also encourage the use of both large and small motor skills through music, movement and crafts. Parent participation is not required but **PARTICIPANTS MUST BE POTTY TRAINED.**

**Instructor: JCSD Staff | Location: HNC**

CL #	Ages	Day/s	Time	Date	Wks	Fee*
A	2-3	M,W	9:00-11:00A	1/2-1/25	4	\$48/58
B	2-3	M,W	9:00-11:00A	2/1-2/27	4	\$48/58
C	2-3	M,W	9:00-11:00A	3/6-3/29	4	\$48/58
D	2-3	Tu,Th	12:30-2:30P	1/3-1/26	4	\$48/58
E	2-3	Tu,Th	12:30-2:30P	2/2-2/28	4	\$48/58
F	2-3	Tu,Th	12:30-2:30P	3/7-3/30	4	\$48/58
G	4-5	M,W	11:30-2:30P	1/2-1/25	4	\$48/58
H	4-5	M,W	11:30-2:30P	2/1-2/27	4	\$48/58
I	4-5	M,W	11:30-2:30P	3/6-3/29	4	\$48/58
J	4-5	Tu,Th	9:00-12:00P	1/3-1/26	4	\$48/58
K	4-5	Tu,Th	9:00-12:00P	2/2-2/28	4	\$48/58
L	4-5	Tu,Th	9:00-12:00P	3/7-3/30	4	\$48/58

## Mommy and Me

Mommy and me is a fun way to introduce young children to their alphabet, numbers and shapes. This class is designed to promote early socialization skills, and inspire creativity preparing them for the next level of education such as Tiny Tots. No class 1/16. Please note: **Parent participation is required.**

**Instructor: JCSD Staff | Location: ECC Activity Room**

CL #	Ages	Day/s	Time	Date	Wks	Fee*
A	2-5	M,W	10:00-12:00P	1/2-1/25	4	\$45/55
B	2-5	M,W	10:00-12:00P	2/1-2/27	4	\$45/55
C	2-5	M,W	10:00-12:00P	3/6-3/29	4	\$45/55
D	2-5	Tu,Th	9:00-11:00A	1/3-1/26	4	\$45/55
E	2-5	Tu,Th	9:00-11:00A	2/2-2/28	4	\$45/55
F	2-5	Tu,Th	9:00-11:00A	3/7-3/30	4	\$45/55



*This is a paid advertisement*

## 119005

## Dual Immersion Program Programa Bilingüe

These classes are taught by a bilingual credentialed teacher with a multidisciplinary curriculum. This bilingual class will engage children in developmentally appropriate activities, while gaining an understanding of science, math, art, crafts, and the alphabet, through play, music and hands-on activities in a fun, and nurturing environment. A \$25 material fee is due to the instructor on the first day. **Children must be fully potty trained.**

Estas clases son impartida por una maestra bilingüe certificada. La clase cuenta con un currículo multidisciplinario con y actividades apropiadas para cada etapa del desarrollo. Los niños aprenderán ambos idiomas mientras obtienen conocimiento de conceptos simples de aprendizaje tales como coordinación, balance, y destrezas motoras, colores, números, figuras geométricas, ciencia, arte, alfabeto y artesanías en un ambiente divertido. Este es un programa continuo. Un pago de \$25 dolares para materiales que debe ser pagado al instructor el primer día de clase. Los participantes deben de poder ir al baño solos.

## Chispitas de Amor

## 116009

**Instructor: Edna Martinez | Location: ECC Music Room**

CL #	Ages	Day/s	Time	Date	Wks	Fee*
A1	3-4	Tu,Th	9:30-11:30A	1/3-1/31	4	\$99/109
A2	3-4	Tu,Th	9:30-11:30A	2/2-2/28	4	\$99/109
A3	3-4	Tu,Th	9:30-11:30A	3/7-3/30	4	\$99/109

## Burbujitas Alegres

## 116008

**Instructor: Edna Martinez | Location: ECC Activity Room**

CL #	Ages	Day/s	Time	Date	Wks	Fee*
A1	4-5	M,W,F	9:30-11:30A	1/2-1/30	4	\$125/135
A2	4-5	M,W,F	9:30-11:30A	2/1-2/27	4	\$125/135
A3	4-5	M,W,F	9:30-11:30A	3/6-3/31	4	\$125/135

## Gotitas Ingeniosas

## 116012

**Instructor: Edna Martinez | Location: ECC Activity Room**

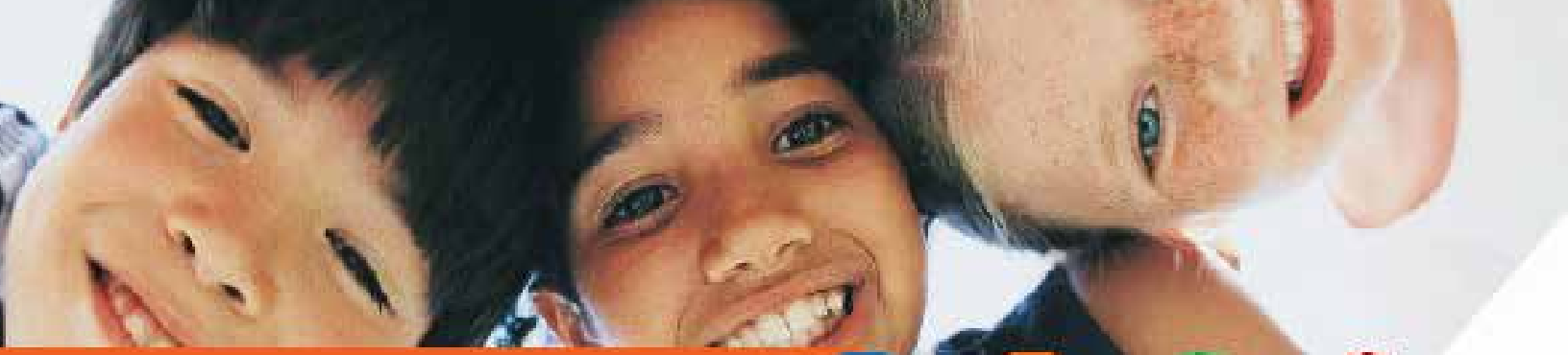
CL #	Ages	Day/s	Time	Date	Wks	Fee*
A	4-5	M-F	11:35-1:45P	1/2-1/27	4	\$230/240
B	4-5	M-F	11:35-1:45P	2/1-2/28	4	\$230/240
C	4-5	M-F	11:35-1:45P	3/6-3/31	4	\$230/240

A \$50 material fee is due to the instructor on the first day. Please bring a healthy snack for your child. Un pago de \$50 dolares para materiales que debe ser pagado al instructor el primer día de clase. Por favor traiga un refrigerio saludable para su hijo.

Introducing young minds to interactive play through colors, numbers and letters in a fun social setting!

*All tiny tot classes are recreational based programs and are not licensed day care.*





**Before and After School  
Program**

**KIDS  
ZONE**

**Enriching the  
lives of youth  
through  
meaningful  
recreation  
experiences!**



**@JCSDPARKS**

Kids Zone is a Before & After school Program located on elementary school campuses. Kids enjoy a variety of recreational experiences including games, arts and crafts, science and cooking projects, outdoor play as well as time for homework.

**Hours of Operation:**

**Before school:** M-F: 7:00am - beginning of school \*

*\*before school not available at Eastvale Elementary*

**After school:** M-F: from school release - 6:30pm

*\*\*Please note: pre-registration is required\*\**

**Locations:**

Clara Barton Elementary School  
Eastvale Elementary School  
Rosa Parks Elementary School  
Ronald Reagan Elementary School

**Inventor Artists' Class**

This class provides children with a fabulous way to get their creative juices flowing through a fun and playful experience. Investigate Leonardo Da Vinci's inventions and his art. Analyze his inventions like the bicycle, catapult, and flying machines. Brainstorm and collaborate to come up with new and creative ideas for machines and other inventions. Build prototypes using a variety of tools and materials provided. Develop snazzy names for your inventions and create television-style advertisements for selling your new exciting products! There will be a \$10 material fee due at the first class meeting./No Class on 1/1

**Instructor: Jonathan Dillard | Location: ECC Art Room**

CL #	Ages	Day/s	Time	Date	Wks	Fee*
A	5.5-14	M	5:00-5:50P	1/2-1/23	4	\$40/50
B	5.5-14	M	5:00-5:50P	1/30-2/20	4	\$40/50
C	5.5-14	M	5:00-5:50P	3/6-3/27	4	\$40/50

**Clays of All Types**

Build and decorate bird houses, jewelry and sculptures using various clays and techniques such as slab, coil, and faux techniques. Polymer, self-drying clays and paint will be used. All supplies are included. There will be a \$10 material fee due at the first class meeting.

**Instructor: Jonathan Dillard | Location: ECC Art Room**

CL #	Ages	Day/s	Time	Date	Wks	Fee*
A	4.5-13	W	6:00-6:50P	1/4-1/25	4	\$0/10
B	4.5-13	W	6:00-6:50P	2/1-2/22	4	\$0/10
C	4.5-13	W	6:00-6:50P	3/8-3/29	4	\$40/50
D	13-18	W	7:00-7:50P	1/4-1/25	4	\$40/50
E	13-18	W	7:00-7:50P	2/1-2/22	4	\$40/50
F	13-18	W	7:00-7:50P	3/8-3/29	4	\$40/50

**125012****Crochet 101**

Students will learn the basic techniques such as a slip knot, foundation chain, single crochet, turning chain, magic circle and more. Students will be able to complete a project and gain the skill to create their own. This class accommodates all levels, from beginner to advance. Each month we will be working on different projects. Please Note: Please bring yarn and hook to first class.

**Instructor: Edna Martinez**  
**Location: HNC Activity Rm**

CL #	Ages	Day/s	Time	Date	Wks	Fee*
A	10+	Tu	6:20-7:10P	1/3-1/24	4	\$45/55
A1	10+	Tu	6:20-7:10P	2/7-2/28	4	\$45/55
A2	10+	Tu	6:20-7:10P	3/7-3/28	4	\$45/55

**Let's Paint**

Create bright, bold and beautiful paintings in this popular class. Learn painting and color mixing techniques. Use a variety of tools: brushes, palette knives, sponges, etc. for interesting effects. Paint several full color paintings on quality artists' paper and two paintings on canvas. Students choose their own subject matter for each painting. Special needs welcome. Parent participation may be required. There is a \$15 material fee due at the first class meeting.

**Instructor: Jonathan Dillard | Location: ECC Art Room**

CL #	Ages	Day/s	Time	Date	Wks	Fee*
A	4.5-15	Tu	4:00-4:50P	1/3-1/24	4	\$40/50
B	4.5-15	Tu	4:00-4:50P	1/31-2/21	4	\$40/50
C	4.5-15	Tu	4:00-4:50P	3/7-3/28	4	\$40/50
D	16+	W	8:00-8:50P	1/4-1/25	4	\$40/50
E	16+	W	8:00-8:50P	2/1-2/22	4	\$40/50
F	16+	W	8:00-8:50P	3/8-3/29	4	\$40/50

**125021**

**PINE SMILES**  
ORTHODONTICS & PEDIATRIC DENTISTRY

Specializing in  
Infants, Children, and Adolescents  
**Avani Gandhi, DDS**  
Board Certified Pediatric Dentist

Specializing in  
Braces for Children, Teens and Adults  
**Jin Kim, DDS, MS**  
Certified Orthodontist

**5811 Pine Ave, Suite B**  
**Chino Hills • 909-393-4800**  
(in Pine Corporate Center)  
[www.pinesmiles.com](http://www.pinesmiles.com)



**invisalign®**

**A Lifetime Of Smiles**

Easy  
Payment  
Options

Friendly  
and  
Caring Staff

Complimentary  
Orthodontic  
Consultation

Most  
Insurances  
Accepted

**free** infant exam for  
patients under  
2 years of age

**Pine Smiles**  
5811 Pine Ave., Suite B • Chino Hills • 909-393-4800  
New patients only, subject to insurance restrictions.  
Cannot be combined with any other offers.

**free** Beats  
Headphone  
for patients who start full orthodontic  
treatment (Phase 1 treatment not included)

**Pine Smiles**  
5811 Pine Ave., Suite B • Chino Hills • 909-393-4800  
New patients only, must present this coupon. Cannot be combined with  
any other offers including capitation plans.

*This is a paid advertisement*

# BiggER, BettER Your New ER is On Its Way



## The NEW Corona Regional ER

Watch for our opening in 2017! The work is well underway!

### Your New ER is On Its Way

Here's what your new, Corona Regional Medical Center ER will offer:

- Four times the space
- 30 private rooms
- Rapid medical evaluation area for shorter wait times
- Separate walk-in and ambulance entrances ... and more.

Need a Doctor?  
Call Direct Doctors Plus®  
at 800-882-4362.



Complimentary  
Valet Parking



*Partners In Health and Healing*

800 S. Main Street • Corona, CA 92882  
951-737-4343 • [www.coronaregional.com](http://www.coronaregional.com)

Corona Regional Medical Center is designated a  
Primary Stroke Center by The Joint Commission.



American Heart Association  
American Stroke Association  
**CERTIFICATION**  
Meets standards for  
**Primary Stroke Center**

*Physicians are independent practitioners who are not employees or agents of Corona Regional Medical Center.  
The hospital shall not be liable for actions or treatments provided by physicians.*

## Jewelry Making

**125024**

Make handmade beads and arrange them to make various custom jewelry as well as using buttons, and recycled items to develop fun and exciting, one of a kind, jewelry.

**Instructor: Jonathan Dillard | Location: ECC Art Room**

CL #	Ages	Day/s	Time	Date	Wks	Fee*
A	4.5-12	W	4:00-4:50P	1/4-1/25	4	\$40/50
B	4.5-12	W	4:00-4:50P	2/1-2/22	4	\$49/49

## Pastels

**125027**

Build large, colorful floral, still lifes, and portraits using pastel techniques in soft and oil pastel. Special needs welcome. Parent participation may be required.



**Instructor: Jonathan Dillard**

**Location: ECC Art Room**

CL #	Ages	Day/s	Time	Date	Wks	Fee*
A	4.5-13	M	3:00-3:50P	1/2-1/23	4	\$40/50
B	4.5-13	M	3:00-3:50P	1/30-2/20	4	\$40/50
C	4.5-13	M	3:00-3:50P	3/6-3/27	4	\$40/50

## Street Art & City Scapes

**125022**

In this class you will explore the street art and movements and gain inspiration to develop your own unique style by creating a work of original art. Learn about contemporary collage artists such as, Banksy, Alexandre Orion, and Keith Haring, whose work has moved out of the streets and into fine galleries. Try out and combine various materials and techniques such as stenciling, stickers, wood block printing, marker pens, fine brush detailing, air brush, reverse street art and much more. Also experiment with lettering styles! Special needs welcome. Parent participation may be required. There will be a \$15 material fee due at the first class meeting.

**Instructor: Jonathan Dillard | Location: ECC Art Room**

CL #	Ages	Day/s	Time	Date	Wks	Fee*
A	10-18	M	7:00-7:50P	1/2-1/23	4	\$40/50
B	10-18	M	7:00-7:50P	1/30-2/20	4	\$40/50
C	10-18	M	7:00-7:50P	3/6-3/27	4	\$40/50

## Art 101

**125030**

This class gives all artistic skill leveled participants the opportunity to explore the various options that art can provide. Develop watercolor, zoetrope animation, drawings, quilling, etching, rectangle, etc. Projects to take home at the end of class. Special needs welcome. Parent participation may be required./No Class on 1/1

**Instructor: Jonathan Dillard | Location: ECC Art Room**

CL #	Ages	Day/s	Time	Date	Wks	Fee*
A	4.5-13	W	5:00-5:50P	1/4-1/25	4	\$40/50
B	4.5-13	W	5:00-5:50P	2/1-2/22	4	\$40/60
C	4.5-13	W	5:00-5:50P	3/8-3/29	4	\$40/50
D	14+	M	2:00-2:50P	1/2-1/23	4	\$40/50
E	14+	M	2:00-2:50P	1/30-2/20	4	\$40/50
F	14+	M	2:00-2:50P	3/6-3/27	4	\$40/50

## Let's Design

**125036**

Have you ever wanted to be a fashion, interior, or product designer? This fun class will teach the basics of line, color, form, textures and shape. Make concept sketches and learn about fashion in this fun and engaging class. Learn how fabrics drape and move, and react when worn to create a signature style. Please Note: There is a \$10 material fee due at the first class meeting.

**Instructor: Jonathan Dillard | Location: ECC Art Room**

CL #	Ages	Day/s	Time	Date	Wks	Fee*
A	5.5-12	M	6:00-6:50P	1/2-1/23	4	\$40/50
B	5.5-12	M	6:00-6:50P	1/30-2/20	4	\$40/50
C	5.5-12	M	6:00-6:50P	3/6-3/27	4	\$40/50

## Drawing

**125037**

Greatly improve your drawing skills. Learn to create more realism and three-dimensionality in your work. Focus on perspective, composition and shading techniques. Work with a variety of subjects (still life, nature, human form, animals, architecture, etc.) while building an art portfolio. Students will be encouraged to take risks and stretch their abilities while developing their own individual style and creative approach. We will work both with a studio setting and photos.

**Instructor: Jonathan Dillard | Location: ECC Art Room**

CL #	Ages	Day/s	Time	Date	Wks	Fee*
A	4.5-14	Tu	3:00-3:50P	1/3-1/24	4	\$40/50
B	4.5-14	Tu	3:00-3:50P	1/31-2/21	4	\$40/50
C	4.5-14	Tu	3:00-3:50P	3/7-3/28	4	\$40/50
D	12-18	W	2:00-2:50P	1/4-1/25	4	\$40/50
E	12-18	W	2:00-2:50P	2/1-2/22	4	\$40/50
F	12-18	W	2:00-2:50P	3/8-3/29	4	\$40/50

## My Sculpture

**125041**

Learn to make many types of sculptures while exploring different techniques and mediums. Go home each week with a new piece. Learn the ways an artist makes a sculpture. Please note: \$20 material fee due at the first class meeting

**Instructor: Jonathan Dillard | Location: ECC Art Room**

CL #	Ages	Day/s	Time	Date	Wks	Fee*
A	5.5-14	F	3:00-3:50P	1/6-1/27	4	\$40/50
B	5.5-14	F	3:00-3:50P	2/3-2/24	4	\$40/50
C	5.5-14	F	3:00-3:50P	3/10-3/31	4	\$40/50
D	15+	F	4:00-4:50P	1/6-1/27	4	\$40/50
E	15+	F	4:00-4:50P	2/3-2/24	4	\$40/50
F	15+	F	4:00-4:50P	3/10-3/31	4	\$40/50

## Dinosaurs, Mummies & Artifacts

**125043**

Cultivate the Indiana Jones or paleontologist in your child/children using natural and organic materials. Your child will create or explore unique anthropology or paleontology art projects. The class will enhance academic success. Please Note: There is a mandatory \$15-\$20 (based on project) material fee due at the first class meeting. Special needs students are welcome.

**Instructor: Roslyn Dillard | Location: ECC Art Room**

CL #	Ages	Day/s	Time	Date	Wks	Fee*
A	4-12	Th	5:00-6:30P	1/5-1/26	4	\$50/60
B	4-12	Th	5:00-6:30P	2/2-2/23	4	\$50/60
C	4-12	Th	5:00-6:30P	3/2-3/23	4	\$50/60
D	4-12	Sa	10:00-11:30A	1/7-1/28	4	\$50/60
E	4-12	Sa	10:00-11:30A	2/4-2/25	4	\$50/60
F	4-12	Sa	10:00-11:30A	3/4-3/25	4	\$50/60

*This is a paid advertisement*

Sincere, Positive, Trustworthy, Honest 誠正信實

**DANNY CHEN**

(909) 343-8838

DchenPro@Gmail.com

國台西英

Hablo ESPAÑOL ONE | REALTYONEGROUP

買賣房屋 請與我聯絡

Lic # 01906909 For Best result... Hire the BEST!

## Green Thumb Gardening

**125042**

Turn your garden into an Oasis. Learn basic and advance gardening techniques. Explore the art of vertical gardening. Please Note: There is a mandatory \$15-\$20 (based on project) material fee due at the first class meeting.

**Instructor: Roslyn Dillard | Location: ECC Art Room**

CL #	Ages	Day/s	Time	Date	Wks	Fee*
A	18+	F	10:00-10:50A	1/6-1/27	4	\$39/49
B	18+	F	10:00-10:50A	2/3-2/24	4	\$39/49
C	18+	F	10:00-10:50A	3/10-3/31	4	\$39/49
D	18+	Sa	12:00-12:50P	1/7-1/28	4	\$39/49
E	18+	Sa	12:00-12:50P	2/4-2/25	4	\$39/49
F	18+	Sa	12:00-12:50P	3/4-3/25	4	\$39/49

## Fairy Gardening 101

**125044**

Cultivate the artist in you using natural & organic materials. Create unique and beautiful fairy gardens for you home and garden. Please Note: There is a mandatory \$15-\$25 (based on project) material fee due at the first class meeting. Special needs students are welcome.

**Instructor: Roslyn Dillard | Location: ECC Art Room**

CL #	Ages	Day/s	Time	Date	Wks	Fee*
A	18+	Th	1:30-3:30P	1/5-1/26	4	\$75/85
B	18+	Th	1:30-3:30P	2/2-2/23	4	\$75/85
C	18+	Th	1:30-3:30P	3/2-3/23	4	\$75/85



## Valentine Art

**135017**

Come out and learn how to make beautiful hand crafted Valentine gifts. Surprise your loved one, with a gift that represents creativity and thoughtfulness. We will explore many different gift ideas. Please Note: There is a mandatory \$15-\$20 (based on project) material fee due at the first class meeting.

**Instructor: Roslyn Dillard | Location: ECC Art Room**

CL #	Ages	Day/s	Time	Date	Wks	Fee*
A	18+	Sa	1:30-3:30P	2/11-2/11	1	\$25/35



# REGISTRATION OPENS

## December 19, 2016

in person or online at:  
*parks.jcsd.us*

## Terrarium

### Extravaganza

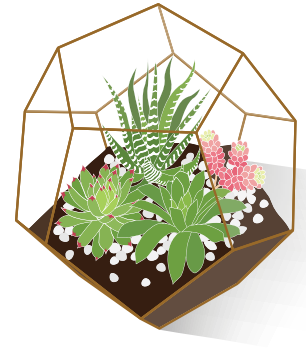
**135018**

Succulents, cacti and terrarium are all the rage. Come and join the many other enthusiasts who are just excited about cacti and succulents. Learn how to make a terrarium that you created and designed that looks like the expensive and beautifully displayed terrariums in many specialty boutiques. Please Note: There is a mandatory \$20-\$25 (based on project) material fee due at the first class meeting.

**Instructor: Roslyn Dillard**

**Location: ECC Art Room**

CL #	Ages	Day/s	Time	Date	Wks	Fee*
A	18+	Sa	1:30-3:30P	1/21-1/21	1	\$25/35
B	18+	Sa	1:30-3:30P	3/18-3/18	1	\$25/35



## Amazing Science

**126039**

Back by popular demand! The best of Volcanoes and Things that go BOOM, Science Bonanza & Icky Creepy, Just Plain Gross Science classes. All combined in one class. Don't miss the fun, limited space. Please Note: There is a mandatory \$15 material fee due at the first class meeting. Dress for a mess. No parent participation required.

**Instructor: Edna Martinez | Location: HNC Activity Rm C**

CL #	Ages	Day/s	Time	Date	Wks	Fee*
A	6-12	M	6:30-7:20P	1/2-1/23	4	\$39/49
B	6-12	M	6:30-7:20P	2/6-2/27	4	\$39/49
C	6-12	M	6:30-7:20P	3/6-3/27	4	\$39/49

## Colorful Science

**116005**

It's an explosion of colorful fun! Children will explore the vibrant primary colors of red, blue, and yellow science experiments, crafts, songs, and stories. Get down and dirty making lava lamps, colorful hand prints, color-changing carnations, and more! Please Note: \$15 Material fee

**Instructor: Edna Martinez | Location: ECC Art Room**

CL #	Ages	Day/s	Time	Date	Wks	Fee*
A	3-6	Th	4:00-4:45P	3/2-3/23	4	\$39/49

## Chemical Magic

**126012**

Children will have a terrific time learning concepts in a fun and hands on atmosphere. Projects include making oobleck, Silly Putty, ice cream, and more. Learning concepts include atoms and bonding, acids and bases, polymer chemistry, reactions, density, and more. This is an ongoing program with new experiments every month. Please Note: \$15 material fee

**Instructor: Edna Martinez | Location: HNC**

CL #	Ages	Day/s	Time	Date	Wks	Fee*
A	6-12	W	6:30-7:20P	1/4-1/25	4	\$39/49
B	6-12	W	6:30-7:20P	2/1-2/22	4	\$39/49
C	6-12	W	6:30-7:20P	3/1-3/22	4	\$39/49

## Creative Brain Video

**129033**

You play them; now learn how to develop them! Working in teams students will create and program their own video games that they can take home and play. Computers are provided for classroom use. Please Note: There is a \$20 material fee due at the first meeting.

**Instructor: Mike Boone | Location: ECC Music Room**

CL #	Ages	Day/s	Time	Date	Wks	Fee*
A	8-15	W	4:00-4:50P	1/11-2/15	6	\$66/76
B	8-15	W	4:00-4:50P	2/22-3/29	6	\$66/76

**Jr Robotics-Wild Animals****129052**

This class is a perfect mixture of fun and learning, using LEGO We Do Robots. Using LEGO bricks, students build a hungry alligator, a flying bird, and a roaring lion. They also learn how to program and operate their creations using a laptop computer.

**Instructor: Engineering for Kids | Location: HNC**

CL #	Ages	Day/s	Time	Date	Wks	Fee*
A	4-6	W	3:30-6:00P	3/8-3/29	4	\$90/100

**Spanish for Kids****126038**

Arte, Cuentos, Canciones y Actividades Divertidas/ Art, Stories, Songs & Fun Activities This beginner's class is for kids who enjoy interactive and hands on learning. This is a dual immersion fun class. Different topics that interest the child will be introduced through stories sing along, writings, games, and in combination with an art project. The goal of this class is to expand their vocabulary and encourage them to use Spanish words more often at their own pace. This is an ongoing program./No Class on 2/9

**Instructor: Edna Martinez | Location: HNC**

CL #	Ages	Day/s	Time	Date	Wks	Fee*
A1	6-12	Tu	4:15-5:10P	1/3-1/24	4	\$45/55
A2	7-12	Tu	4:15-5:10P	2/7-2/28	4	\$45/55
A3	7-12	Tu	4:15-5:10P	3/7-3/28	4	\$45/55

**Spanish for Traveler****126040**

Spanish for travelers is a fast, fun, and manageable way to learn the Spanish you need to travel around the Spanish- speaking world. This class will take you through, simple lesson by simple lesson, until you feel comfortable ordering food in Mexico, reserving a hotel room in Costa Rica, asking for directions to the beach in southern Spain, and maybe even flirting in Argentina. Buen Viaje! Enjoy your trip!

**Instructor: Edna Martinez | Location: HNC Activity Rm D**

CL #	Ages	Day/s	Time	Date	Wks	Fee*
A	16+	Tu	5:20-6:10P	1/3-1/24	4	\$45/55
B	16+	Tu	5:20-6:10P	2/7-2/28	4	\$45/55
C	16+	Tu	5:20-6:10P	3/7-3/28	4	\$45/55

**Telugu Language Class****126027**

Students will learn Telugu through various levels of teachings.

**Instructor: Bhaskar Undi | Location: ECC Activity Room A**

CL #	Ages	Day/s	Time	Date	Wks	Fee*
A	5-18	F	7:00-9:00P	1/6-3/31	13	\$15/25
B	5-18	F	7:00-9:00P	1/6-3/31	13	\$15/25
C	5-18	F	7:00-9:00P	1/6-3/31	13	\$15/25
D	5-18	F	7:00-9:00P	1/6-3/31	13	\$15/25

**Homework Tutoring****126041**

Our program encourages students to explore learning through this afternoon session with hands-on homework help, study skills and test preparation for a variety of academic subjects. Students will work with tutors to tackle troublesome homework problems in small study groups. Additionally, students will learn helpful research and study tips, enabling them to develop their self-confidence in performing academic work. Please Note: There is a \$10 material fee due to the instructor at the first class meeting. No Class on 1/16, 2/13, 2/20

**Instructor: AGI Academy | Location: ECC Activity Room B**

CL #	Ages	Day/s	Time	Date	Wks	Fee*
A	8-13	M,W	2:45-3:30P	1/11-2/1	4	\$84/94
B	8-13	M,W	2:45-3:30P	2/6-3/1	4	\$84/94
C	8-13	M,W	2:45-3:30P	3/6-3/22	3	\$84/94

**Math Workshop****126042**

Experience a new practical approach to math problem solving and hands-on practice for 3rd-8th graders. This class teaches foundational math and time management skills, whether your student needs chapter review, assistance on a new topic for school or help preparing for tests. AGI is here to help. This program not only helps with individual for improvement, but will also help your student's manage overall success in school. Please call (626) 379-1112 for all questions .Please Note: There is a \$10 material fee due to the instructor at the first class meeting. No Class on 1/16, 2/13, 2/20

**Instructor: AGI Academy | Location: ECC Activity Room B**

CL #	Ages	Day/s	Time	Date	Wks	Fee*
A	8-13	M,W	3:30-4:15P	1/11-2/1	4	\$84/94
B	8-13	M,W	3:30-4:15P	2/6-3/1	4	\$84/94
C	8-13	M,W	3:30-4:15P	3/6-3/22	3	\$84/94

**Convenient, Affordable, and Effective.**

**Take ed2go courses anywhere and when it's most convenient for you.**

We offer you hundreds of engaging online courses for adults, covering every topic from SAT Test Preparation to Web Design.

Each ed2go course comes equipped with a patient and caring instructor, lively discussions with your fellow students, and plenty of practical information that you can put to immediate use.

Visit our site to learn more.

**[www.ed2go.com/jcsdparks](http://www.ed2go.com/jcsdparks)**

**ed2go** | Learn More

## Critical Reading & Written Expression

**126043**

This course helps students strengthen their critical reading & writing skills, both of which are essential analytical skills for academic success. It involves students to identify information and ideas, as well as to bring outside knowledge, biases and values in order to properly analyze a given text. Students will learn how to enhance their reading comprehension skills but identify important information, assumptions, values, and language use. Learn strategies and tools used to do the written expression and mechanism. Please call (626) 379-1112 for all questions. Please Note: There is a \$10 material fee due to the instructor at the first class meeting. No Class on 1/16, 2/13, 2/20

**Instructor: AGI Academy | Location: ECC Activity Room B**

CL #	Ages	Day/s	Time	Date	Wks	Fee*
A	8-13	M,W	4:15-5:00P	1/11-2/1	4	\$84/94
B	8-13	M,W	4:15-5:00P	2/6-3/1	4	\$84/94
C	8-13	M,W	4:15-5:00P	3/6-3/22	3	\$84/94

## Intro to Typing

**126044**

Develop your child's basic typing skills properly and prepare them for many years of future usage. Supplemental exercises and typing games will be introduced to make learning fun as your child is taught a lifetime skill. Take this opportunity to prepare your child for learning the keyboarding and get a jump start in school. Please call (626) 379-1112 for all questions. Please Note: There is a \$10 material fee due to the instructor at the first class meeting.

**Instructor: AGI Academy | Location: ECC Computer Room**

CL #	Ages	Day/s	Time	Date	Wks	Fee*
A	6-14	W	1:45-2:30P	1/11-2/15	6	\$84/94
B	6-14	W	1:45-2:30P	2/22-3/29	6	\$84/94

## Intro to Microsoft Word & Power Point

**126045**

Introduce students to the Microsoft Word for writing report, homework or basic communication. Hands on exercise are provided with the opportunity to make a publication and turn into an awesome slide show presentation by using Power Point. Advanced users will sharpen their skills to next level of learning. Please call (626) 379-1112 for all questions. Please Note: There is a \$10 material fee due to the instructor at the first class meeting.

**Instructor: AGI Academy | Location: ECC Computer Room**

CL #	Ages	Day/s	Time	Date	Wks	Fee*
A	6-16	W	2:30-3:15P	1/11-2/15	6	\$84/94
B	6-16	W	2:30-3:15P	2/22-3/29	6	\$84/94



## Microsoft Office

### Computing for Application

**126046**

Whether you want to use your computer to edit documents, create slide show presentations or have fun with animations, produce tables, insert charts and spreadsheets with formula, this class will let you explore the basic skills to enrich your computer knowledge in Microsoft Word for session 1, PowerPoint for session 2, and Excel for session 3. We develop a series of hands-on practice and accelerate students to master these useful Microsoft programs practically that almost come with every computer. Please call (626) 379-1112 for all questions. Please Note: There is a \$10 material fee due to the instructor at the first class meeting. No Class on 1/16, 2/13, 2/20

**Instructor: AGI Academy | Location: ECC Computer Room**

CL #	Ages	Day/s	Time	Date	Wks	Fee*
A Word	6-16	M,W	6:00-6:45P	1/11-2/1	4	\$84/94
B PwrPoint	6-16	M,W	6:00-6:45P	2/6-3/1	4	\$84/94
C Excel	6-16	M,W	6:00-6:45P	3/6-3/22	3	\$84/94

## Intro to Computer & Internet

**136012**

Never touched a computer? You did, but felt confused? It's never too late to learn! Explore the basics skills to enrich your knowledge, understand the terminologies and access the online world through Internet. Experience learners can sharpen their skills to advance their levels. Our hands on practice can accelerate students to master the computer learning easy and fun. Please Note: There is a \$10 material fee due to the instructor at the first class meeting.

**Instructor: Alan Ng | Location: ECC Computer Room**

CL #	Ages	Day/s	Time	Date	Wks	Fee*
A	18+	W	1:00-1:45P	1/11-2/15	6	\$84/94
B	18+	W	1:00-1:45P	2/22-3/29	6	\$84/94

## Debate & Public Speaking

**126047**

Gain confidence speaking publicly; strengthen interpersonal, problem solving and communication skills. Students will be required to thoroughly research a given topic, create a persuasive argument, anticipate opponents' rebuttal and prepare intelligent responses. Please call (626) 379-1112 for all questions. Please Note: There is a mandatory \$10 material fee due at the first class meeting. No Class on 1/16, 2/13, 2/20

**Instructor: AGI Academy | Location: ECC Computer Room**

CL #	Ages	Day/s	Time	Date	Wks	Fee*
A	8-13	M,W	5:00-5:45P	1/11-2/1	4	\$84/94
B	8-13	M,W	5:00-5:45P	2/6-3/1	4	\$84/94
C	8-13	M,W	5:00-5:45P	3/6-3/22	3	\$84/94

## Online Driver's Ed

**128001**

Online Driver's Ed- Ages 15 & Up: DMV allows teens to receive their learner's permit at age 15 1/2 and a license at age 16. This class is the first required step that must be completed. This is an online course with videos, animated driving scenarios and sample test questions. Learn the rules of the road, major causes of traffic collisions, MDV procedures and much more. A licensed instructor is available to answer any questions. Receive DMV approved Certificate of Completion. Sign up any time. Registration is ongoing.

**Instructor: Erika Vieyra | Location: ONLINE**

CL #	Ages	Day/s	Time	Date	Wks	Fee*
A	15+	M-Su	12:00-11:59P	1/1-1/31	5	\$43/53
B	15+	M-Su	12:00-11:59P	2/1-2/28	4	\$43/53
C	15+	M-Su	12:00-11:59P	3/1-3/31	5	\$43/53

## UAS (Drone)

**129051**

Unmanned Aerial Systems (UAS)-Overview & Flight Safety, class participants will be provided an overview of UAS components, systems, regulations, and flight safety instructions. Students will be introduced to flight mission planning and direct flight controls. Students have the opportunity to fly several models of UAS' and discuss FAA certifications for Commercial Pilot/ Recreational flying. Students will have 2 classroom sessions and 4 field sessions (weather permitting).

**Instructor: Randall Owens | Location: ECC Meeting Room**

CL #	Ages	Day/s	Time	Date	Wks	Fee*
A	13+	Sa	10:00-11:00A	1/7-2/11	6	\$55/65

## Photography 129006

Own a DSLR camera? Thinking about buying one? Get the most out of your investment by learning how to use it to its full potential. Learn the principles of photography and fundamental camera techniques.

**Instructor:** Chris Ramirez  
**Location:** ECC Meeting Room



CL #	Ages	Day/s	Time	Date	Wks	Fee*
Beginning:						
A	16+	Tu	6:00-8:00P	1/10-1/31	4	\$60/70
B	16+	Tu	6:00-8:00P	2/7-2/28	4	\$60/70
C	16+	Tu	6:00-8:00P	3/7-3/28	4	\$60/70
Advanced:						
D	16+	Tu	8:00-9:00P	1/10-1/31	4	\$60/70
E	16+	Tu	8:00-9:00P	2/7-2/28	4	\$60/70
F	16+	Tu	8:00-9:00P	3/7-3/28	4	\$60/70

## Babysitter CPR 129016

Impress parents with your American Heart Association CPR and pediatric first aid certifications, organizational skills, and ability to safely care for and entertain children. Become the babysitter every family invites back! Please Note: Material fee of \$43 is due to the instructor on the first day of class. Students must supply a self-addressed stamped envelope and a lunch. Advance registration required.

**Instructor:** Alicia Drozd | **Location:** ECC Activity Room B

CL #	Ages	Day/s	Time	Date	Wks	Fee*
A	15+	Su	8:30-4:00P	2/5	1	\$39/49
B	15+	Sa	8:30-4:00P	3/25	1	\$39/49



## CPR & AED 129048

Don't miss a beat and increase the number of people "Stayin Alive." American Heart Association Heartsaver card is valid for 2 years. Approved for teachers and child care providers, but not medical professionals. Please Note: A mandatory \$33 materials fee is due to the instructor at the start of the class. Must supply a self-addressed stamped envelope. Advance registration required.

**Instructor:** Alicia Drozd | **Location:** ECC Activity Room B

CL #	Ages	Day/s	Time	Date	Wks	Fee*
A	15+	Su	8:30-12:00P	2/5-2/5	1	\$39/49
B	15+	Sa	8:30-12:00P	3/25-3/25	1	\$39/49

## Caregiving 101 129053

Are you caring for a loved one? Do you feel overwhelmed and just burned out? Come to a class that will offer you a respite and a new look on this journey of caregiving. Meet some new friends who are going through this also and build a stronger network system. Explore the various resources in the community. Please Note: There is a mandatory \$25 material fee due at the first class meeting.

**Instructor:** Roslyn Dillard | **Location:** ECC Art Room

CL #	Ages	Day/s	Time	Date	Wks	Fee*
A	21+	F	5:30-6:30P	1/6-1/27	4	\$39/49
B	21+	F	5:30-6:30P	2/3-2/24	4	\$39/49
C	21+	F	5:30-6:30P	3/3-3/24	4	\$39/49

For registration information see page 34

## Mature Adult Clay 145000

Build and decorate bird houses, jewelry and sculptures using various clays and techniques such as slab, coil, and faux techniques. Polymer, self-drying clays and paint will be used. All supplies are included. Special needs welcome. Parent participation may be required. There will be a \$15 material fee due at the first class meeting.

**Instructor:** Jonathan Dillard | **Location:** ECC Art Room

CL #	Ages	Day/s	Time	Date	Wks	Fee*
A	50+	F	1:00-1:50A	1/6-1/27	4	\$40/50
B	50+	F	1:00-1:50A	2/3-2/24	4	\$40/50
C	50+	F	1:00-1:50A	3/10-3/31	4	\$40/50

## Mature Jewelry Making 145001

Make handmade beads and arrange them to make various custom jewelry as well as using buttons, and recycled items to develop fun and exciting, one of a kind, jewelry. There is a \$20 material fee due at the first class meeting.

**Instructor:** Roslyn Dillard | **Location:** ECC Art Room

CL #	Ages	Day/s	Time	Date	Wks	Fee*
A	50+	F	12:00-12:50A	1/6-1/27	4	\$40/50
B	50+	F	12:00-12:50A	2/3-2/24	4	\$40/50
C	50+	F	12:00-12:50A	3/10-3/31	4	\$40/50

## Mature Painting 145003

Create bright, bold and beautiful paintings in this popular class. Learn painting and color mixing techniques. Use a variety of tools: brushes, palette knives, sponges, etc. for interesting effects. Paint several full color paintings on quality artists' paper and two paintings on canvas. Students choose their own subject matter for each painting. Special needs welcome.

**Instructor:** Jonathan Dillard | **Location:** ECC Art Room

CL #	Ages	Day/s	Time	Date	Wks	Fee*
A	50+	F	11:00-11:50A	1/6-1/27	4	\$40/50
B	50+	F	11:00-11:50A	2/3-2/24	4	\$40/50
C	50+	F	11:00-11:50A	3/10-3/31	4	\$40/50

## Mature Arts & Me 145004

Love the arts and going to multiple venues to explore this interest? Do you wonder at Monet, or get chills when you hear Bach? Come and join a group that shares your passion. You will learn about many different art forms and take field trips to gain exposure to many art venues in the area. Please Note: There is a mandatory \$15-\$20 (based on project) material fee due at the first class meeting. Venue and transportation cost is the responsibility of the enrolled student. Details to be discussed in first class meeting.

**Instructor:** Roslyn Dillard | **Location:** ECC Art Room

CL #	Ages	Day/s	Time	Date	Wks	Fee*
A	50+	F	2:00-3:00P	1/6-1/27	4	\$39/49
B	50+	F	2:00-3:00P	2/3-2/24	4	\$39/49
C	50+	F	2:00-3:00P	3/3-3/24	4	\$39/49

## Mature Botanical 145005

Cultivate the artist in you using natural and organic materials. Create unique and beautiful art pieces for your home and garden. Please Note: There is a mandatory \$15-\$25 (based on project) material fee due at the first class meeting.

**Instructor:** Roslyn Dillard | **Location:** ECC Art Room

CL #	Ages	Day/s	Time	Date	Wks	Fee*
A	50+	W	10:00-12:00P	1/4-1/25	4	\$75/85
B	50+	W	10:00-12:00P	2/1-2/22	4	\$75/85
C	50+	W	10:00-12:00P	3/1-3/22	4	\$75/85



**REGISTRATION OPENS**

**December 19, 2016**

in person or online at:  
*parks.jcsd.us*

# REGISTRATION

## Register Today!

### GENERAL INFORMATION

1. REGISTRATION must occur prior to the second class meeting date.
2. REFUNDS will only be granted before the start of the second class, with the exception of one day classes.
3. IF CLASSES ARE CANCELLED, you will be notified and refunded back to your payment type. If payment was made by cash or check, refunds will be returned by check. Check processing may take up to four weeks. Please ensure that your address is current.
4. PLEASE REGISTER EARLY. If a class minimum is not met by 4pm the day before the class begins, it will be cancelled.
5. TIMES, DATES AND FEES OF ALL PROGRAMS ARE SUBJECT TO CHANGE.
6. Please be advised that all participants involved in any programs or special events are subject to be photographed. Such photographs may be used by the JCSD Parks and Recreation Department without any obligation.
7. PROCESSING FEE. A \$2.00 processing fee applies to all walk-in transactions.
8. All processing and application fees are non refundable.
9. All fees, class dates and times are subject to change due to holidays, special events, participation level or board approval.

## REGISTRATION OPENS DECEMBER 19!

### 3 WAYS TO REGISTER

**Online - Mail In - Walk In**

*For more information about registration, recreation classes and reservations, please call:*

**(951)727-3524**



**Mail In**

**EASTVALE COMMUNITY CENTER**

13820 Schleisman Road, Eastvale CA



**Online**

**parks.jcsd.us**



**Walk In**

**EASTVALE COMMUNITY CENTER**

13820 Schleisman Road, Eastvale CA

**HARADA NEIGHBORHOOD CENTER**

13099 65th Street, Eastvale CA



PLEASE PRINT & FILL OUT COMPLETELY

### ADULT INFORMATION

LAST NAME \_\_\_\_\_ FIRST NAME \_\_\_\_\_ MIDDLE INITIAL \_\_\_\_\_

ADDRESS \_\_\_\_\_ CITY/STATE \_\_\_\_\_ ZIP \_\_\_\_\_

HOME PHONE ( ) \_\_\_\_\_ CELL PHONE ( ) \_\_\_\_\_ EMERGENCY ( ) \_\_\_\_\_

EMAIL ADDRESS \_\_\_\_\_

### PARTICIPANT INFORMATION

Class Number						Class Section	Participant Name	Sex	Birthday	Fee
Method of Payment Accepted: <input type="checkbox"/> Check									Processing Fee	\$2.00
									Total Fee	

Please Read Carefully and Sign Below

In consideration of my (and/or my child's) participation in this activity, I hereby release and discharge Jurupa Community Services District Parks and Recreation, and its representatives, successors, and assigns, from any and all liability arising from accident, injury, and illness that I (he/she) may suffer as a result of my (our) participation in this activity. I (we) also will follow the rules and regulations set by Jurupa Community Services District Parks and Recreation and above named parties. Parent or guardian must sign for anyone age 18 and under.

I do hereby grant and give these groups the right to use my or my child(s) photograph or image with or without my or my child's name, both singly and in conjunction with other persons or objects and presentations, advertising, publicity, and promotion relating thereto.

Sign: \_\_\_\_\_

# DISCOVER...

PARKS

NATURE



## McCUNE PARK

7450 EASTVALE PARKWAY

PLAYGROUND

*We have many park shelters and athletic fields throughout the JCSD Parks territory available for reservation.*

TENNIS COURTS

BASEBALL FIELDS

PICNIC AREA

*For information on reserving a shelter:*

(951) 727-3524 | [parks.jcsd.us](http://parks.jcsd.us)



# EASTVALE<sup>®</sup> *Edition*

Next Town Hall Meeting  
February 21, 2017  
@ 6:30 PM  
Rosa Parks Elementary  
School or  
Ramirez Intermediate

PRESORT STANDARD  
CLASS MAIL

ECRWSS  
PRESORTED STD  
U.S. POSTAGE  
PAID  
Escondido, CA  
PERMIT NO. 475

Residential Customer

## COMING SOON TO ORCHARD PARK



MOONLIGHT

CINEMA

## SUMMER 2017

Connect with us!



@jcsdparks