

# JURUPA COMMUNITY SERVICES DISTRICT

## **ADDENDUM NO. 1** TO THE PLANS AND SPECIFICATIONS FOR

### WATERLINE REPLACEMENT IN BEN NEVIS BOULEVARD, CONNING STREET AND LORITA STREET [DISTRICT PROJECT NO. 3360]

Bidders are advised that the plans and specifications for the above referenced projects are hereby amended in the following manner and the following manner only:

#### **A. GENERAL**

1. All provisions of this Addendum No. 1 are hereby incorporated into the Contract Documents and bidders shall account for all provisions pursuant to this Addendum No. 1 in submitting their bid proposals. Each Bidder shall include a dated and signed copy of this Addendum No. 1 with his sealed bid proposal.
2. Volume II is prepared for bidding purpose. Bidder shall submit entire Volume II along with dated and signed copy of this Addendum No. 1.
3. Field Joints Repair – Cement Mortar Lining shall be per Section C - Water Pipe Installation of Specifications. General Sealant is not allowed.
4. The requirements for Lorita Street pavement repair are the same as requirements for Ben Nevis Boulevard and Conning Street.

#### **B. SPECIFICATIONS**

1. The third paragraph of Item 19, Special Requirements (Page SR-13) has been revised to “CONTRACTOR SHALL COOPERATE WITH OWNER IN SCHEDULING ALL CONNECTIONS AT LEAST FIVE (5) DAYS IN ADVANCE.”
2. Bid Schedules have been revised and attached with this Addendum. Contractor shall use Revised Bid Schedules for his bid proposal.
3. This paragraph has been added to Item 13, Special Requirements (Page SR-9) as “Contractor shall schedule night time to make service tie-ins for all business customers along Ben Nevis near Mission Boulevard intersection. Contractor shall include all associated costs in the bid proposal and no additional compensation will be allowed.”

**C. DRAWINGS**

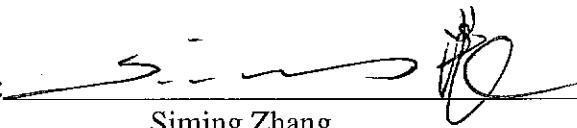
1. The Connection Detail 1-A of Lorita Street (Sheet 1/1) has been revised. The 8"x11" revised drawing is attached shown the revised detail for Bidder's use.

2. Ben Nevis Boulevard between Station 27+00 and 28+00:

Plan - One (1) water service and meter shall be added to address 9920.  
- One HPI is at sta. 27+50.

Profile - Continuous slope of  $S = - 0.009$  and no grade breaks.  
- No utility crossings.

Dated: 5/5/2010

By:   
Siming Zhang  
P.E. 60156



By: \_\_\_\_\_  
(Bidder's Company Name)

Date Received by Bidder:

\_\_\_\_\_  
(Bidder's Signature)

\_\_\_\_\_

\_\_\_\_\_  
(Type or Print Name)

Bidder shall include a signed copy of this Addendum No. 1 with the bid proposal.

## REVISED- BID SCHEDULE I

Revised 5/5/2010

### BEN NEVIS BOULEVARD WATERLINE REPLACEMENT

<u>Item No.</u>	<u>Description</u>	<u>Qty<sup>(1)</sup></u>	<u>Unit</u>	<u>Unit Price*</u>	<u>Bid Extensions*</u>
101	Mobilization, Insurance, Bonds and Preconstruction Video <sup>(2)</sup>	1	L.S.	\$ _____	\$ _____
102	Pothole existing utilities prior to construction	1	L.S.	\$ _____	\$ _____
103	8" Dia. CML/CMC (12 Ga.) W.S.P. Watermain	2,712	L.F.	\$ _____	\$ _____
104	8" Dia. CML/CMC (Std. Wt.) Fully Welded W.S.P. Watermain	165	L.F.	\$ _____	\$ _____
105	6" Dia. CML/CMC (12 Ga.) W.S.P. Watermain	52	L.F.	\$ _____	\$ _____
106	8" Dia. R.S. Gate Valve per JCSD Std. Dwg. No. B-1	8	EA.	\$ _____	\$ _____
107	6" Dia. R.S. Gate Valve per JCSD Std. Dwg. No. B-1	1	EA.	\$ _____	\$ _____
108	6" Fire Hydrant Assembly per JCSD Std. Dwg. No. G-1 (including Gate Valve, Guard Posts and Pavement Marker(s))	7	EA.	\$ _____	\$ _____

<sup>(1)</sup> Quantities (except for "Lump Sum:" item numbers) are estimated and are for the purpose of comparing bid only. Payment will be based upon actual quantities furnished, installed or constructed in accordance with the Contract Documents.

\* The above prices include any amount payable by the Owner for taxes by reason of this contract.

<sup>(2)</sup> Payment shall not exceed 5% of the total for Bid Schedule I.

<u>Item No.</u>	<u>Description</u>	<u>Qty<sup>(1)</sup></u>	<u>Unit</u>	<u>Unit Price*</u>	<u>Bid Extensions*</u>
109	6" Super Fire Hydrant assembly per JCSD Std. Dwg. No. G-1A (including gate Valve, guard posts and pavement marker(s))	2	EA.	\$ _____	\$ _____
110	1" Air Valve Installation per JCSD Std. Dwg. No. E-1 (including guard posts)	2	EA.	\$ _____	\$ _____
111	Connection Detail 2-A per Construction Detail on Sheet 5 <sup>(2)</sup>	1	L.S.	\$ _____	\$ _____
112	Connection Detail 2-B per Construction Detail on Sheet 5 <sup>(2)</sup>	1	L.S.	\$ _____	\$ _____
113	Connection Detail 3-A per Construction detail on Sheet 5 <sup>(2)</sup>	1	L.S.	\$ _____	\$ _____
114	Connection Detail 4-A per Construction detail on Sheet 5 <sup>(2)</sup>	1	L.S.	\$ _____	\$ _____
115	Connection Detail 4-B per Construction detail on Sheet 5 <sup>(2)</sup>	1	L.S.	\$ _____	\$ _____
116	Traffic Control and Safety per the County of Riverside Transportation Dept. Encroachment Permit (see Special Requirements)	1	L.S.	\$ _____	\$ _____

<sup>(1)</sup> Quantities (except for "Lump Sum:" item numbers) are estimated and are for the purpose of comparing bid only. Payment will be based upon actual quantities furnished, installed or constructed in accordance with the Contract Documents.

\* The above prices include any amount payable by the Owner for taxes by reason of this contract.

<sup>(2)</sup> Each connection includes necessary piping, fittings, butt straps, flanges, etc. required to make connection(s) to existing waterlines.

<u>Item No.</u>	<u>Description</u>	<u>Qty<sup>(1)</sup></u>	<u>Unit<sup>*</sup></u>	<u>Unit Price</u>	<u>Bid Extensions<sup>*</sup></u>
117	Remove and replace existing traffic loops and conduit in kind per RCTD standards, as applicable and as required to provide for a fully functional system	1	L.S.	\$_____	\$_____
118	Trenching, sheeting, shoring and bracing	1	L.S.	\$_____	\$_____
119	Pavement Removal, Disposal and Replacement	2,712	L.F.**	\$_____	\$_____
120	Grinding and Asphalt Concrete Capping per RCTD encroachment Permit	2,712	L.F.**	\$_____	\$_____
121	1" service connected with new box installation for 3/4" and 5/8" meter per JCSD Std. No. D-1 connected to customer Onsite Piping <sup>(2)</sup> . Existing water meters to be relocated as directed by District's representative.	15	EA	\$_____	\$_____
122	1" service connected with new box installation for 1" meter per JCSD Std. No. D-2 connected to customer Onsite Piping <sup>(2)</sup> . Existing water meters to be relocated as directed by District's representative.	6	EA.	\$_____	\$_____

(1) Quantities (except for "Lump Sum:" item numbers) are estimated and are for the purpose of comparing bid only. Payment will be based upon actual quantities furnished, installed or constructed in accordance with the Contract Documents.

\* The above prices include any amount payable by the Owner for taxes by reason of this contract.

\*\* Per linear foot of mainline trench.

(2) All new water meters will be furnished by the District for installation by the contractor where directed by the District.

<u>Item No.</u>	<u>Description</u>	<u>Qty</u> <sup>(1)</sup>	<u>Unit</u> *	<u>Unit Price</u>	<u>Bid Extensions</u> *
123	1.5" water service connected with new meter box installation for 1.5" meter per JCSD Std. No. D-3 connected to customer Onsite Piping <sup>(2)</sup> . Existing water meter to be relocated as directed by District or District representative.	1	EA.	\$_____	\$_____
124	2" water service line connected with new meter box installation for 2" meter per JCSD Std. No. D-3 connected to customer Onsite Piping <sup>(2)</sup> . Existing water meter to be relocated as directed by District or District representative.	1	EA.	\$_____	\$_____
125	Unknown exist. sewer lateral crossing over prop. watermain per JCSD Std. Dwg. No. A-10 (see Special Requirements)	5	EA.	\$_____	\$_____
126	Replace existing below ground 6" Fire Service per JCSD Std. Dwg. No. H-1. Location as directed by the District or District representative. Remove existing vault and salvage ex. fire service to the District.	1	L.S.	\$_____	\$_____

<sup>(1)</sup> Quantities (except for "Lump Sum:" item numbers) are estimated and are for the purpose of comparing bid only. Payment will be based upon actual quantities furnished, installed or constructed in accordance with the Contract Documents.

\* The above prices include any amount payable by the Owner for taxes by reason of this contract.

<sup>(2)</sup> All new water meters will be furnished by the District for installation by the contractor where directed by the District.



## REVISED- BID SCHEDULE II

Revised 5/5/2010

### CONNING STREET WATERLINE REPLACEMENT

<u>Item No.</u>	<u>Description</u>	<u>Qty.</u> <sup>(1)</sup>	<u>Unit</u>	<u>Unit Bid Price</u> *	<u>Bid Extension</u> *
201	Mobilization <sup>(2)</sup>	1	L.S.	\$_____	\$_____
202	Pothole existing utilities prior to construction	1	L.S.	\$_____	\$_____
203	8" Dia. CML/CMC (12 Ga.) W.S.P. Watermain	1,054	L.F.	\$_____	\$_____
204	8" Dia. CML/CMC (Std. Wt.) Fully Welded W.S.P. Watermain	78	L.F.	\$_____	\$_____
205	8" Dia. R.S. Gate Valve per JCSD Std. Dwg. No. B-1	1	EA.	\$_____	\$_____
206	6" Fire Hydrant Assembly per JCSD Std. Dwg. No. G-1 (including Gate Valve, Guard Posts and Pavement Marker(s))	4	EA.	\$_____	\$_____
207	1" Air Valve Installation per JCSD Std. Dwg. No. E-1 (including guard posts)	1	EA.	\$_____	\$_____
208	Connection Detail 2-A per Construction Detail on Sheet 4 <sup>(3)</sup>	1	L.S.	\$_____	\$_____

<sup>(1)</sup>Quantities (except for "Lump Sum" item numbers) are estimated and are for the purpose of comparing bids only. Payment will be based upon actual quantities furnished, installed or constructed in accordance with the Contract Documents.

\* The above prices include any amount payable by the owner for taxes by reason of this contract.

<sup>(2)</sup> Payment shall not exceed 5% of total for Bid Schedule II.

<sup>(3)</sup> Each connection includes necessary piping, fittings, butt straps, flanges, etc. required to make connection(s) to existing waterlines.

<u>Item No.</u>	<u>Description</u>	<u>Qty.</u> <sup>(1)</sup>	<u>Unit</u>	<u>Unit Bid Price</u> *	<u>Bid Extension</u> *
209	Connection Detail 3-A per Construction Detail on Sheet 4 <sup>(2)</sup>	1	L.S.	\$_____	\$_____
210	Traffic Control and Safety per the County of Riverside Transportation Dept. Encroachment Permit (see Special Requirements)	1	L.S.	\$_____	\$_____
211	Trenching, sheeting, shoring and bracing	1	L.S.	\$_____	\$_____
212	Pavement Removal, Disposal and Replacement	1,132	L.F. **	\$_____	\$_____
213	Grinding and Asphalt Concrete Cap per RCTD encroachment permit	1,132	L.F. **	\$_____	\$_____
214	1" water service line connected with new meter box installation for 3/4" meter per JCSD Std. No. D-1 connected to customer Onsite Piping <sup>(3)</sup> . Existing water meters to be relocated as directed by the District or District representative.	20	EA	\$_____	\$_____

<sup>(1)</sup> Quantities (except for "Lump Sum" item numbers) are estimated and are for the purpose of comparing bids only. Payment will be based upon actual quantities furnished, installed or constructed in accordance with the Contract Documents.

\* The above prices include any amount payable by the owner for taxes by reason of this contract.

\*\* Per linear foot of mainline trench.

<sup>(2)</sup> Each connection includes necessary piping, fittings, butt straps, flanges, etc. required to make connection(s) to existing waterlines.

<sup>(3)</sup> All new water meters will be furnished by the District for installation by the contractor where directed by the District.

<u>Item No.</u>	<u>Description</u>	<u>Qty.</u> <sup>(1)</sup>	<u>Unit</u>	<u>Unit Bid Price</u> *	<u>Bid Extension</u> *
215	1" water service line connected with new meter box installation for 5/8" meter per JCSD Std. No. D-1 connected to customer Onsite Piping <sup>(2)</sup> . Existing water meters to be relocated as directed by the District or District representative	9	EA	\$_____	\$_____
216	Abandon existing 2" and 4" Dia. waterline and appurtenances per plans and as shown on project drawings	1	L.S.	\$_____	\$_____
217	Unknown existing sewer lateral crossing over prop. watermain per JCSD Std. Dwg. No. A-10 per specs.	5	EA.	\$_____	\$_____
218	Provide video inspection of pipelines per specifications	1	L.S.	\$_____	\$_____
219	NPDES/SWPPP: provide & implement Storm Water Pollution Prevention Plan & Monitoring Program	1	L.S.	\$_____	\$_____
220	Remove and replace existing concrete driveways, street signs, and drain pipes	1	L.S.	\$_____	\$_____

<sup>(1)</sup> Quantities (except for "Lump Sum" item numbers) are estimated and are for the purpose of comparing bids only. Payment will be based upon actual quantities furnished, installed or constructed in accordance with the Contract Documents.

\* The above prices include any amount payable by the owner for taxes by reason of this contract.

<sup>(2)</sup> All new water meters will be furnished by the District for installation by the contractor where directed by the District.

<u>Item No.</u>	<u>Description</u>	<u>Qty.</u> <sup>(1)</sup>	<u>Unit</u>	<u>Unit Bid Price</u> *	<u>Bid Extension</u> *
221	Remove and replace ex. asphalt concrete dikes with 6" asphalt concrete dikes per County of Riverside Std. Dwg. No. 212	1,100	L.F.	\$_____	\$_____
222	Pressure testing, chlorination, and disinfection of pipelines along with all other work in the Contract Documents not outlined in Bid Items 201 to 221 to make system operational	1	L.S.	\$_____	\$_____

Total Bid Schedule II \$\_\_\_\_\_\*

(Sum of Extension Nos. 201 thru 222) (Figures)

<sup>(1)</sup> Quantities (except for "Lump Sum" item numbers) are estimated and are for the purpose of comparing bids only. Payment will be based upon actual quantities furnished, installed or constructed in accordance with the Contract Documents.

\* The above prices include any amount payable by the owner for taxes by reason of this contract.

## REVISED- BID SCHEDULE III

Revised 5/5/2010

### LORITA STREET WATERLINE REPLACEMENT

<u>Item No.</u>	<u>Description</u>	<u>Qty.</u> <sup>(1)</sup>	<u>Unit</u>	<u>Unit Bid Price</u> *	<u>Bid Extension</u> *
301	Mobilization <sup>(2)</sup>	1	L.S.	\$_____	\$_____
302	Pothole existing utilities prior to construction	1	L.S.	\$_____	\$_____
303	8" Dia. CML/CMC (12 Ga.) W.S.P. Watermain	637	L.F.	\$_____	\$_____
304	6" Fire Hydrant Assembly per JCSD Std. Dwg. No. G-1 (including Gate Valve, Guard Posts and Pavement Marker(s))	2	EA.	\$_____	\$_____
305	Connection Detail 1-A per Construction Detail on Sheet 1 <sup>(2)</sup>	1	L.S.	\$_____	\$_____
306	Traffic Control and Safety per the County of Riverside Transportation Dept. Encroachment Permit (see Special Requirements)	1	L.S.	\$_____	\$_____
307	Trenching, sheeting, shoring and bracing	1	L.S.	\$_____	\$_____
308	Pavement Removal, Disposal and Replacement	637	L.F.**	\$_____	\$_____

<sup>(1)</sup> Quantities (except for "Lump Sum" item numbers) are estimated and are for the purpose of comparing bids only. Payment will be based upon actual quantities furnished, installed or constructed in accordance with the Contract Documents.

\* The above prices include any amount payable by the owner for taxes by reason of this contract.

<sup>(2)</sup> Shall not exceed 5% of the total for Bid Schedule III.

\*\* Per linear foot of mainline trench.

<u>Item No.</u>	<u>Description</u>	<u>Qty.</u> <sup>(1)</sup>	<u>Unit</u>	<u>Unit Bid Price</u> *	<u>Bid Extension</u> *
309	Grinding and Asphalt Concrete Cap per RCTD Encroachment Permit	637	L.F.**	\$ _____	\$ _____
310	1" service line connected with new box installation for 5/8" and 3/4" meter per JCSD Std. No. D-1 connected to customer Onsite Piping <sup>(2)</sup> . Existing water meters to be relocated. Location as directed by the District or District representative	18	EA	\$ _____	\$ _____
311	Abandon existing 4" Dia. waterline and appurtenances as shown on project drawings	1	L.S.	\$ _____	\$ _____
312	Unknown exist. sewer lateral crossing over prop. watermain per JCSD Std. Dwg. No. A-10 (see Special Requirements)	4	EA.	\$ _____	\$ _____
313	Provide video inspection of pipelines per specifications	1	L.S.	\$ _____	\$ _____
314	NPDES/SWPPP provide & implement Storm Water Pollution Prevention Plan & Monitoring Program	1	L.S.	\$ _____	\$ _____

<sup>(1)</sup>Quantities (except for "Lump Sum" item numbers) are estimated and are for the purpose of comparing bids only. Payment will be based upon actual quantities furnished, installed or constructed in accordance with the Contract Documents.

\* The above prices include any amount payable by the owner for taxes by reason of this contract.

\*\* Per linear foot of mainline trench.

<sup>(2)</sup> All new water meters will be furnished by the District for installation by the contractor where directed by the District.

<u>Item No.</u>	<u>Description</u>	<u>Qty.</u>	<u>Unit</u>	<u>Unit Bid Price</u>	<u>Bid Extension</u> *
315	Testing, chlorination, and disinfection of pipelines along with all other work in the Contract Documents not outlined in Bid Items 301 to 314 to make system operational	1	L.S.	\$_____	\$_____

Total Bid Schedule III \$\_\_\_\_\_\*

(Sum of Extension Nos. 301 thru 315) (Figures)

<sup>(1)</sup>Quantities (except for "Lump Sum" item numbers) are estimated and are for the purpose of comparing bids only. Payment will be based upon actual quantities furnished, installed or constructed in accordance with the Contract Documents.

\*The above prices include any amount payable by the owner for taxes by reason of this contract.



**REVISED- BID SUMMARY SHEET**

(shall be filled in by Bidder)

**BID SCHEDULE NO.**

**TOTAL ESTIMATE**

I \$ \_\_\_\_\_ \*

II \$ \_\_\_\_\_ \*

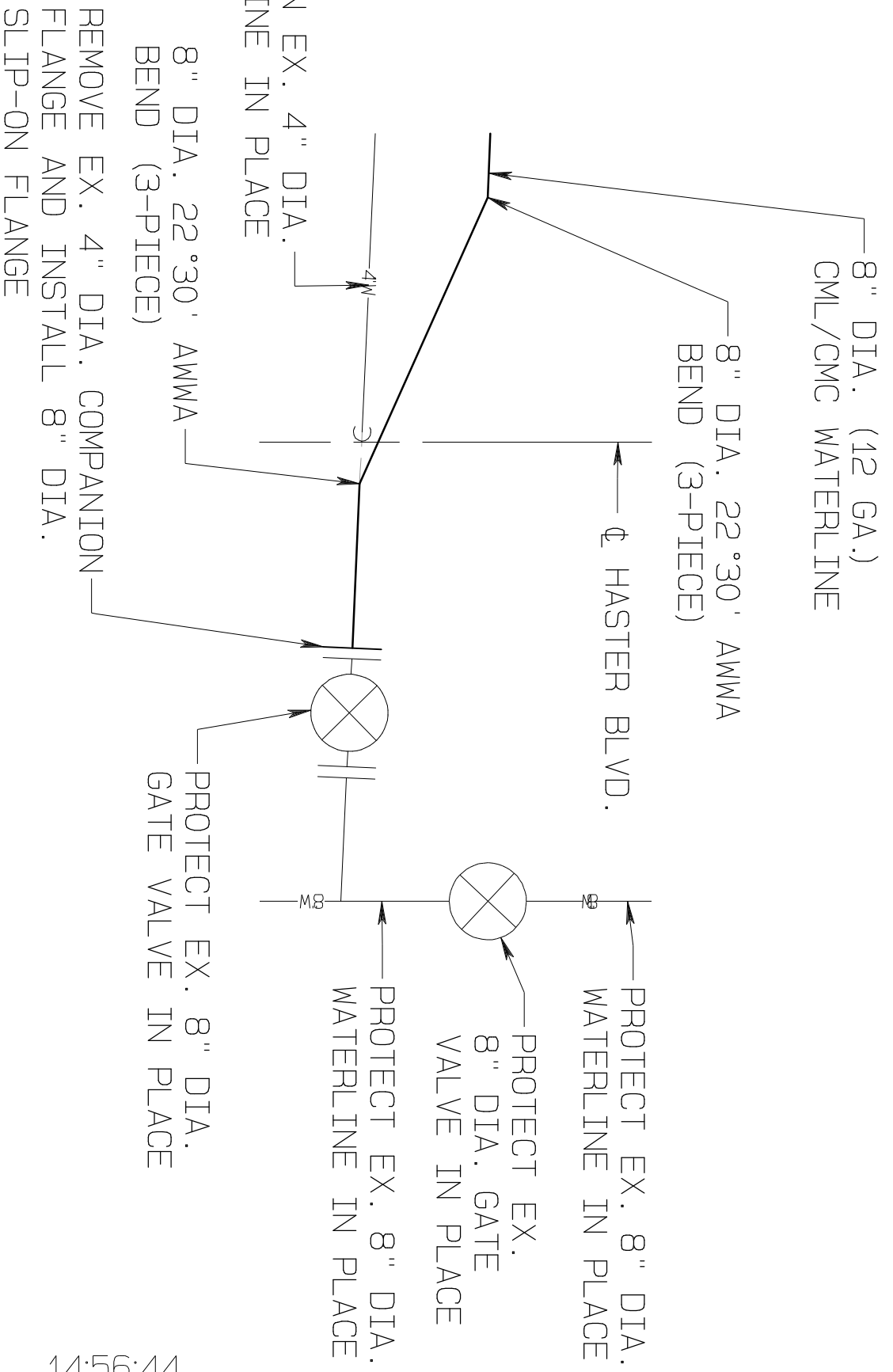
III \$ \_\_\_\_\_ \*

TOTAL BID (Sum of Bid Schedules I, II and III) \$ \_\_\_\_\_ \*

**Total Bid (Schedules I, II and III):** \_\_\_\_\_

\_\_\_\_\_  
(words) \_\_\_\_\_ \*

\* The above prices include any amount payable by the Owner for taxes by reason of this contract.



# CONNECTION DETAIL 1-A

N.T.S.